



Elms Crescent, SW4

£2,495,000

A stunning Victorian family home in the heart of Abbeville Village. The property benefits from a substantial three storey extension creating a living space far bigger than your traditional counterpart in the area.

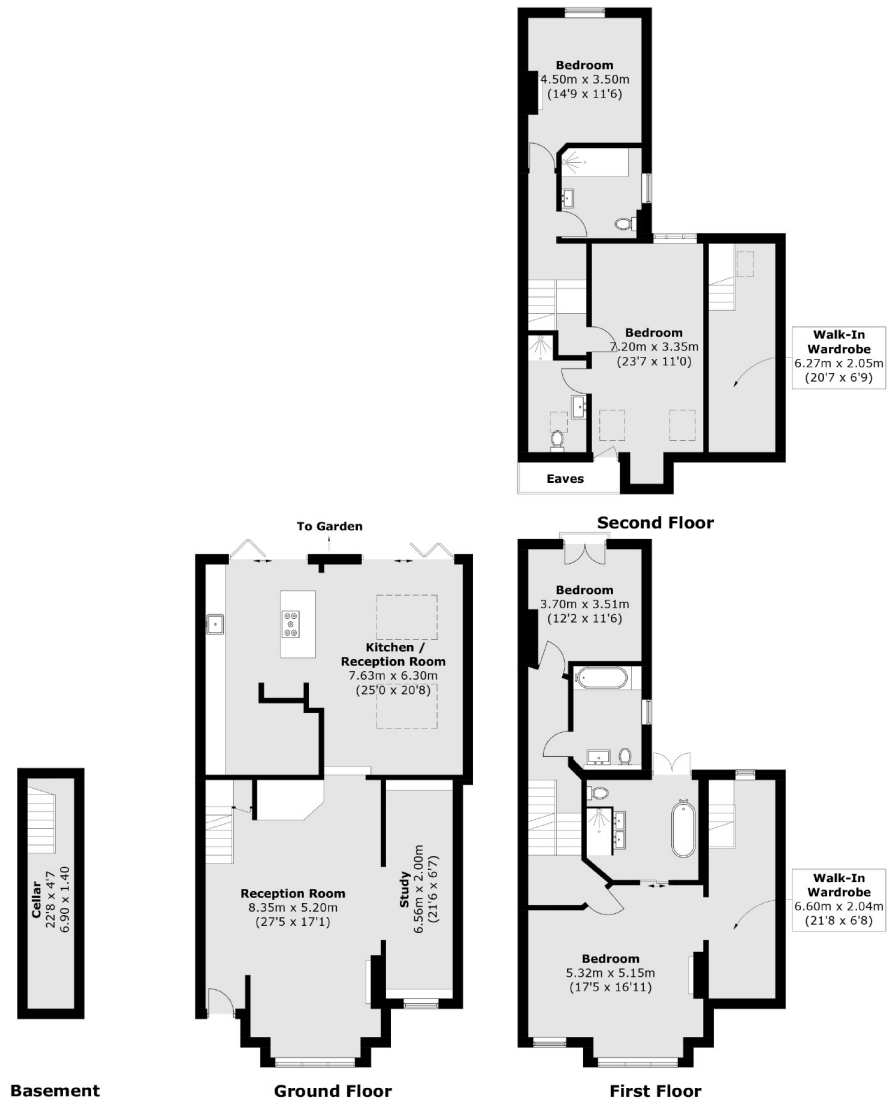
- Victorian Family Home
- End Of Terrace & Side Access
- Four Bedrooms
- Four Bathrooms
- Master Suite
- Chain Free



Elms Crescent is a popular tree lined road in running through the heart of Abbeville Village. Residents find themselves a short walk from the parade of independent shops, bars and restaurants of Abbeville Road and the open expanses of Clapham Common. Commuters have a number of options including both Clapham South & Common Underground (Northern Line) and a number of regular bus routes into the City.







Total area (approx.): 265.7 sq. m (2,859.9 sq. ft)
(Including Basement & Excluding Eaves)

Jacksons Clapham
73 Abbeville Road
London
SW4 9JN
020 8875 7995
clapham.sales@jacksonsestateagents.com

Energy Rating: C We aim to make our particulars both accurate and reliable. However they are not guaranteed; nor do they form part of an offer or contract. If you require clarification on any points then please contact us, especially if you're traveling some distance to view. Please note that appliances and heating systems have not been tested and therefore no warranties can be given as to their good working order.