



Rosebery Road, SW2

£525,000

An immaculate two bedroom Victorian conversion located on the borders of Brixton Hill and Clapham. The property has been recently renovated to an exceptional standard, including a feature crittall window, stone bench tops,

- Victorian Conversion
- Two Bedrooms
- Modernised Throughout
- Long Lease
- Chain Free
- Central Location

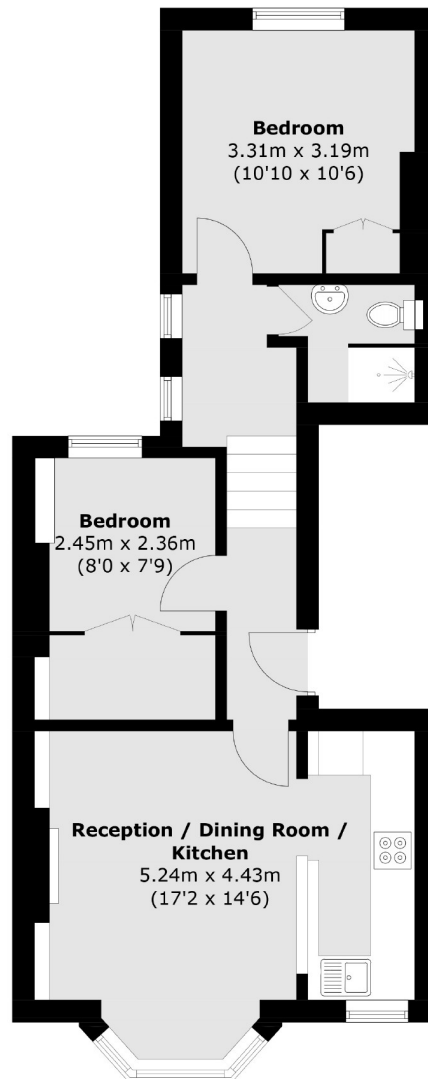


The second bedroom features a built in study desk and a walk in wardrobe which can easily be removed to create a larger bedroom.

The property is located within close proximity to the popular Abbeville Village offering an array of boutique shops. Clapham High Street and Brixton Village are also close by offering many shops and restaurants as well as transport links into the City. Exceptional transport links with bus stops at the end of the road.







Total area (approx.): 50.6 sq. m (544.6 sq. ft)

Jacksons Clapham
73 Abbeville Road
London
SW4 9JN
020 8875 7995
clapham.sales@jacksonsstateagents.com

Energy Rating: We aim to make our particulars both accurate and reliable. However they are not guaranteed; nor do they form part of an offer or contract. If you require clarification on any points then please contact us, especially if you're traveling some distance to view. Please note that appliances and heating systems have not been tested and therefore no warranties can be given as to their good working order.