



Hubert Grove, SW9

£1,000,000

Victorian terraced house which has potential to be extended into the side return and into the loft. Well maintained and nicely presented throughout there is scope to personalise.

- Victorian Terrace
- Five Bedrooms
- Two Separate Receptions
- Large Kitchen/Dining Room
- Potential To Extend
- 0.3 Miles To Clapham North Tube



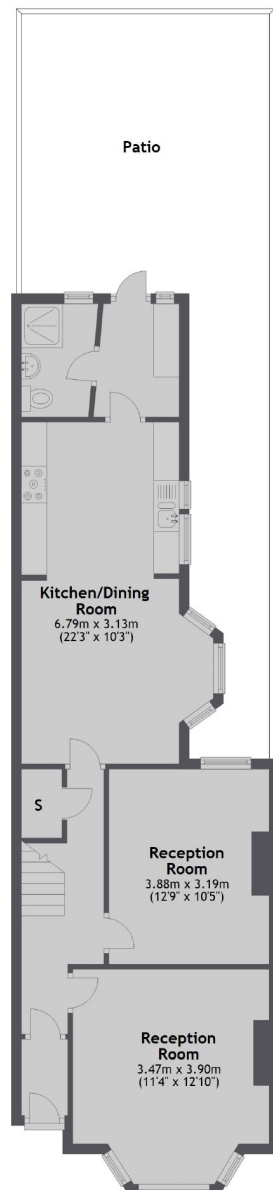
Arranged over two storeys at the front and three storeys to the rear the property currently measures over 1,630 square feet and could be comfortably over 2,000 square feet once fully extended. The ground floor has two reception rooms, large kitchen/dining room plus utility room and a ground floor shower room. The first floor has three large rooms plus a family bathroom whilst there are two further rooms on the top floor. The rear garden has a high brick rear retaining wall providing security and privacy.

Hubert Grove is a pleasant tree lined residential road which is conveniently located for Clapham North underground station and all that Clapham has to offer plus Stockwell and Brixton are easily accessible.

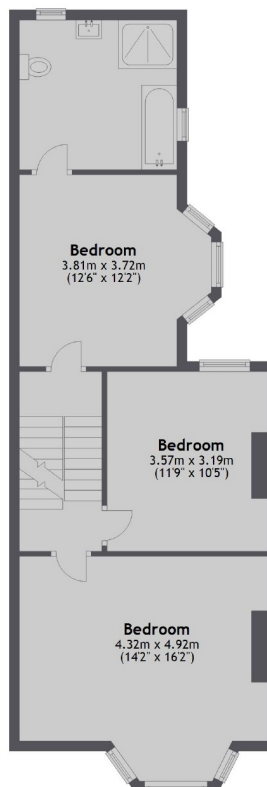




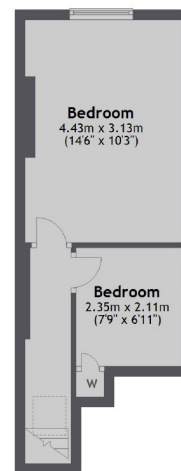
Ground Floor



First Floor



Second Floor



Total area: approx. 152.0 sq. metres (1636.5 sq. feet)

Jacksons Clapham
73 Abbeville Road
London
SW4 9JN
020 8875 7995
clapham.sales@jacksonsestateagents.com

Energy Rating: D We aim to make our particulars both accurate and reliable. However they are not guaranteed; nor do they form part of an offer or contract. If you require clarification on any points then please contact us, especially if you're traveling some distance to view. Please note that appliances and heating systems have not been tested and therefore no warranties can be given as to their good working order.