



Appach Road, SW2

£995,000

A three bedroom double fronted Victorian home on a sought after road in Brixton Hill. The property benefits from a garage and is sold with no onward chain.

- Victorian Property
- Double Fronted
- Three Bedrooms
- Garage
- No Onward Chain
- Central Location

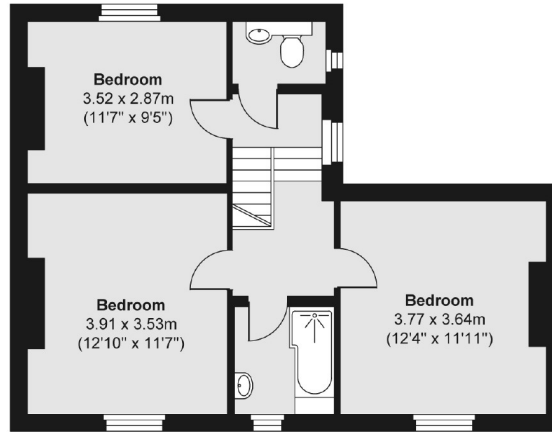


Appach Road is conveniently located between Brixton Hill and Brixton. Residents have easy access to a number of local amenities including a large Sainsbury's and the array of shops, bars and restaurants of Brixton Market. Brockwell Park and the Lido are also a short distance away. Commuters can access the City via numerous bus routes and Brixton Underground & Overground.

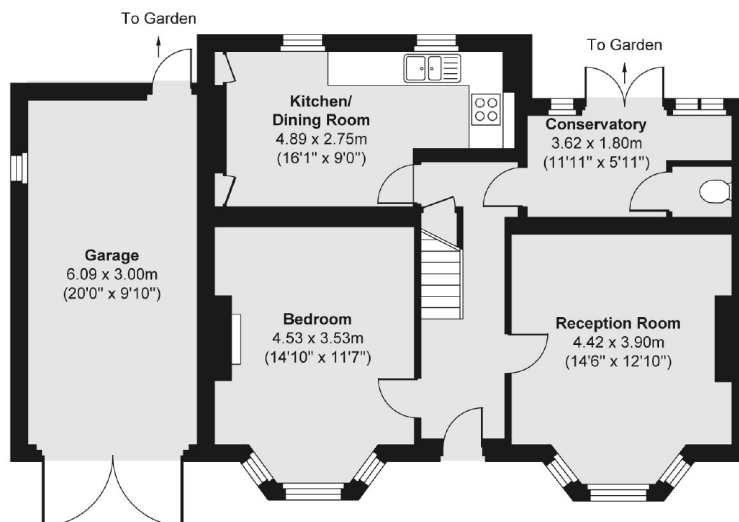




First Floor



Ground Floor



Total area (approx.) 112.84 sq. m (1,215 sq. ft)
Garage area (approx.) 18.27 sq. m (197 sq. ft)

Jacksons Clapham
73 Abbeville Road
London
SW4 9JN
020 8875 7995
clapham.sales@jacksonsestateagents.com

Energy Rating: We aim to make our particulars both accurate and reliable. However they are not guaranteed; nor do they form part of an offer or contract. If you require clarification on any points then please contact us, especially if you're traveling some distance to view. Please note that appliances and heating systems have not been tested and therefore no warranties can be given as to their good working order.