



Gauden Road, SW4

£795,000

A bright and spacious three bedroom duplex in this imposing detached & double front Victorian building. The flat benefits from a large open plan kitchen diner with vaulted ceilings and large velux windows allowing for

- Period Conversion
- Chain Free
- Share of Freehold
- Three Bedrooms
- Two Bathrooms
- Open Plan

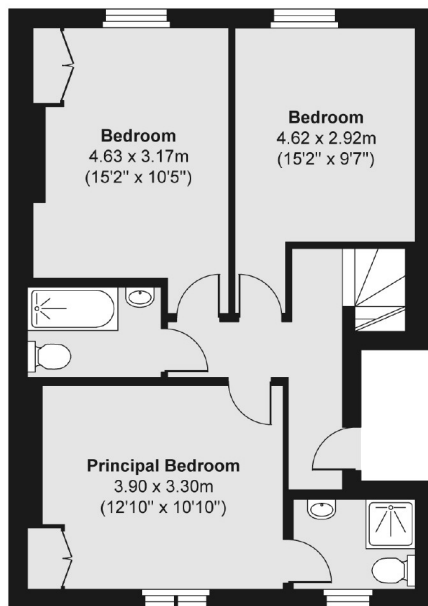


Gauden Road is a wide residential street located just off Larkhall Rise and close to the shops, bars and restaurants of Clapham Old Town and Clapham High Street. Transport is good from either Clapham High Street over ground station or Clapham North underground station.

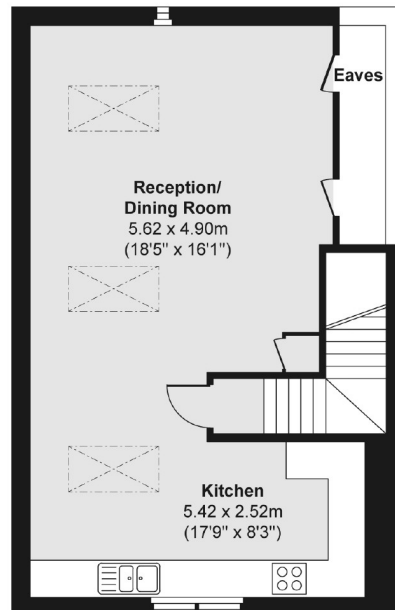




Second Floor



Third Floor



Total area (approx.) 102.58 sq. m (1,104 sq. ft)

Jacksons Clapham
73 Abbeville Road
London
SW4 9JN
020 8875 7995
clapham.sales@jacksonsestateagents.com

Energy Rating: We aim to make our particulars both accurate and reliable. However they are not guaranteed; nor do they form part of an offer or contract. If you require clarification on any points then please contact us, especially if you're traveling some distance to view. Please note that appliances and heating systems have not been tested and therefore no warranties can be given as to their good working order.