



Lyham Road, SW2

£475,000

****Guide Price £475,000 - £525,000**** An incredibly spacious and well maintained purpose built Edwardian ground floor three double bedroom maisonette which has its own small patio garden and comes with a **SHARE OF FREEHOLD**.

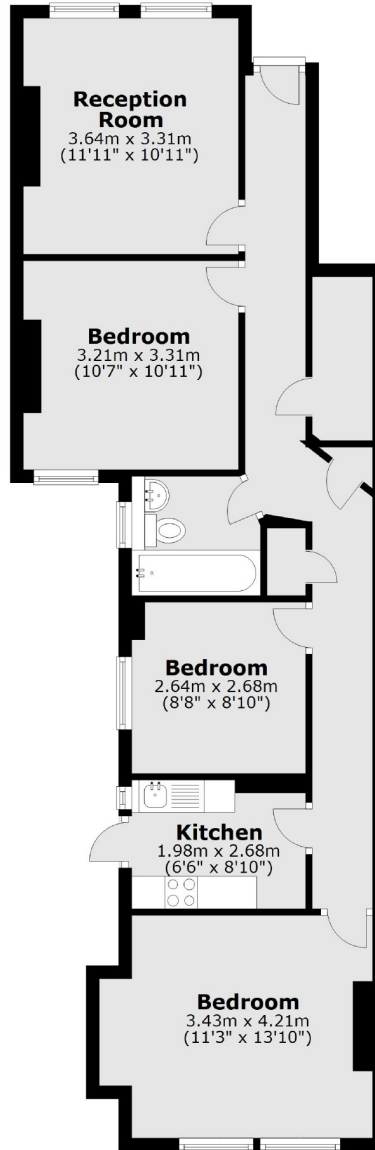
- Share of Freehold
- Three Double Bedrooms
- Large Reception Room
- Fitted Kitchen & Bathroom
- Private Garden
- Well Presented



All arranged on one level and each room being well proportioned the property has double glazed windows throughout and benefits from a new roof. As you enter via your own private front door there is a long hallway which leads to all rooms with the large reception room at the front. Next is a large double bedroom which overlooks the rear garden. Next is the large fitted bathroom followed by the smallest of the three double bedrooms. The kitchen with a good range of fitted units and built in appliances also has a door to the long side garden. Finally the furthest room is the largest bedroom and is a very generous double room.

Lyham Road is a quiet residential road which runs from near Brixton Hill down towards Clapham. It has multiple bus routes locally and is easily accessible to Clapham Common, Clapham North and Brixton tube stations with further overground services also available. Abbeville Village is also close at hand.



Ground Floor

Total area: approx. 71.4 sq. metres (768.6 sq. feet)

Jacksons Clapham
73 Abbeville Road
London
SW4 9JN
020 8875 7995
clapham.sales@jacksonsstateagents.com

Energy Rating: We aim to make our particulars both accurate and reliable. However they are not guaranteed; nor do they form part of an offer or contract. If you require clarification on any points then please contact us, especially if you're traveling some distance to view. Please note that appliances and heating systems have not been tested and therefore no warranties can be given as to their good working order.