



Ostade Road, SW2

£1,050,000

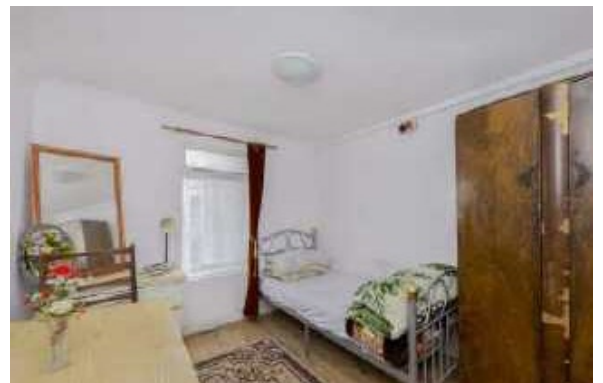
A substantial terraced Victorian family house in a quite residential road, that has been well maintained and yet offers significant scope to be further extended and fully refurbished.

- Unmodernised Family House
- Potential to Extend
- Fabulous Location
- 1,765 Square Feet
- Rear Garden
- Some Period Features

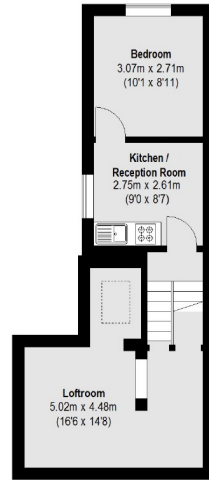


The accommodation is arranged over a series of half landings with two stories at the front and three stories at the rear, plus a loft room which could be upgraded and extended to create a further bedroom and bathroom. The property has well proportioned accommodation which has a renewed roof, uPVC double glazed windows and gas fired central heating, however the house will likely represent a 'project' for an incoming buyer to remodel, refurbish and potentially extend further.

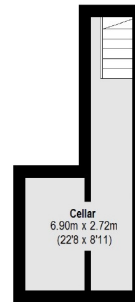
Ostade Road is a quiet residential road just off Elm Park and therefore close to local shops and the popular Elm Park Tavern. It is readily accessible to Brixton town centre with choice of over ground and underground stations plus Brockwell Park is just around the corner, meaning that one of London's finest outdoor spaces, that includes the famous Lido, is almost on your doorstep.



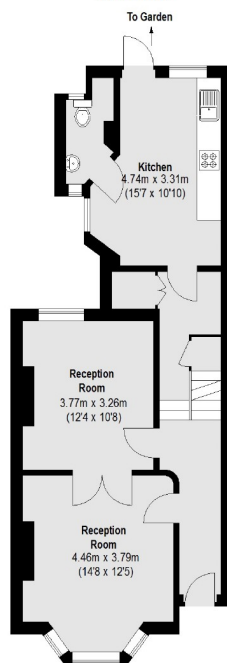




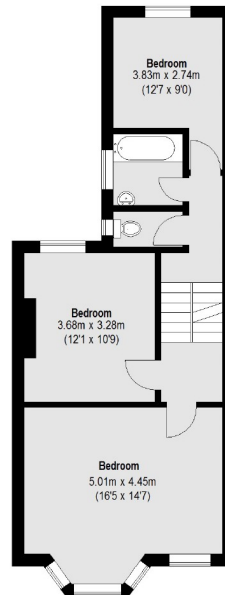
Second Floor



Lower Ground Floor



Ground Floor



First Floor

Total area (approx.): 163.94 sq. m (1765 Sq. ft)

Jacksons Earlsfield
 372-374 Garratt Lane
 Earlsfield
 London
 SW18 4ES
 020 8971 7979

Energy Rating: We aim to make our particulars both accurate and reliable. However they are not guaranteed; nor do they form part of an offer or contract. If you require clarification on any points then please contact us, especially if you're traveling some distance to view. Please note that appliances and heating systems have not been tested and therefore no warranties can be given as to their good working order.