



12 Hawkwood Avenue

Frimley, Camberley, GU16 8LH

- Presented in Show Home Condition
- Larger Than Expected
- Three Bedrooms
- Landscaped West Facing Rear

Guide Price £700,000

EPC Rating 'D'



Hawkswood Avenue, Frimley, Camberley, GU16



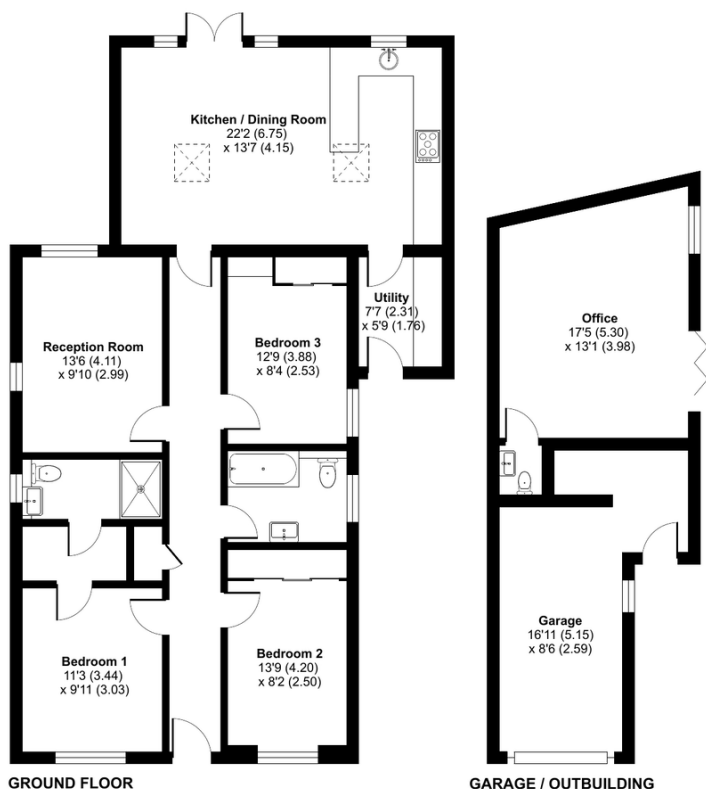
Approximate Area = 1134 sq ft / 105.3 sq m

Garage = 194 sq ft / 18 sq m

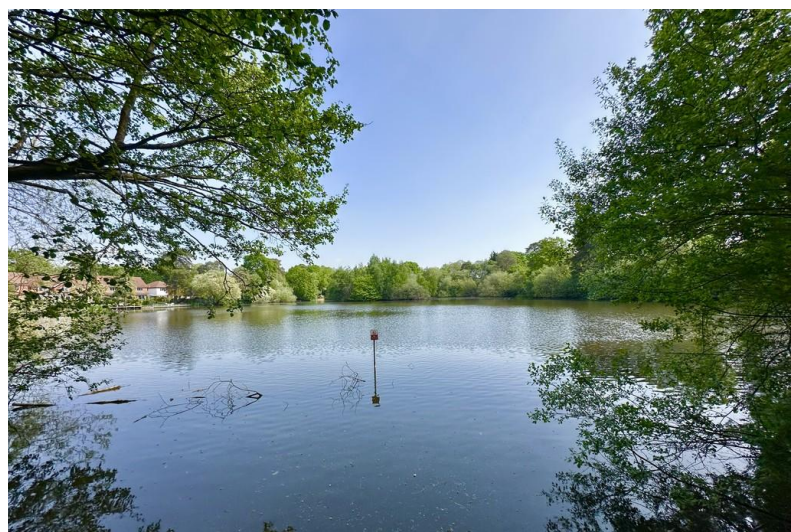
Outbuilding = 220 sq ft / 20.4 sq m

Total = 1548 sq ft / 143.7 sq m

For identification only - Not to scale



Floor plan produced in accordance with RICS Property Measurement 2nd Edition, Incorporating International Property Measurement Standards (IPMS2 Residential). Produced for Hamiltons Property Services. REF: 1286842. © nixecom 2025.



227-229 Frimley Green Road
Frimley Green
Camberley
Surrey
GU16 6LD

www.hamiltonspropertyservices.co.uk
hello@hamiltonspropertyservices.co.uk
01276 409448

Agents Note: Whilst every care has been taken to prepare these sales particulars, they are for guidance purposes only. All measurements are approximate and for general guidance purposes only and whilst every care has been taken to ensure their accuracy, they should not be relied upon and potential buyers are advised to recheck the measurements.