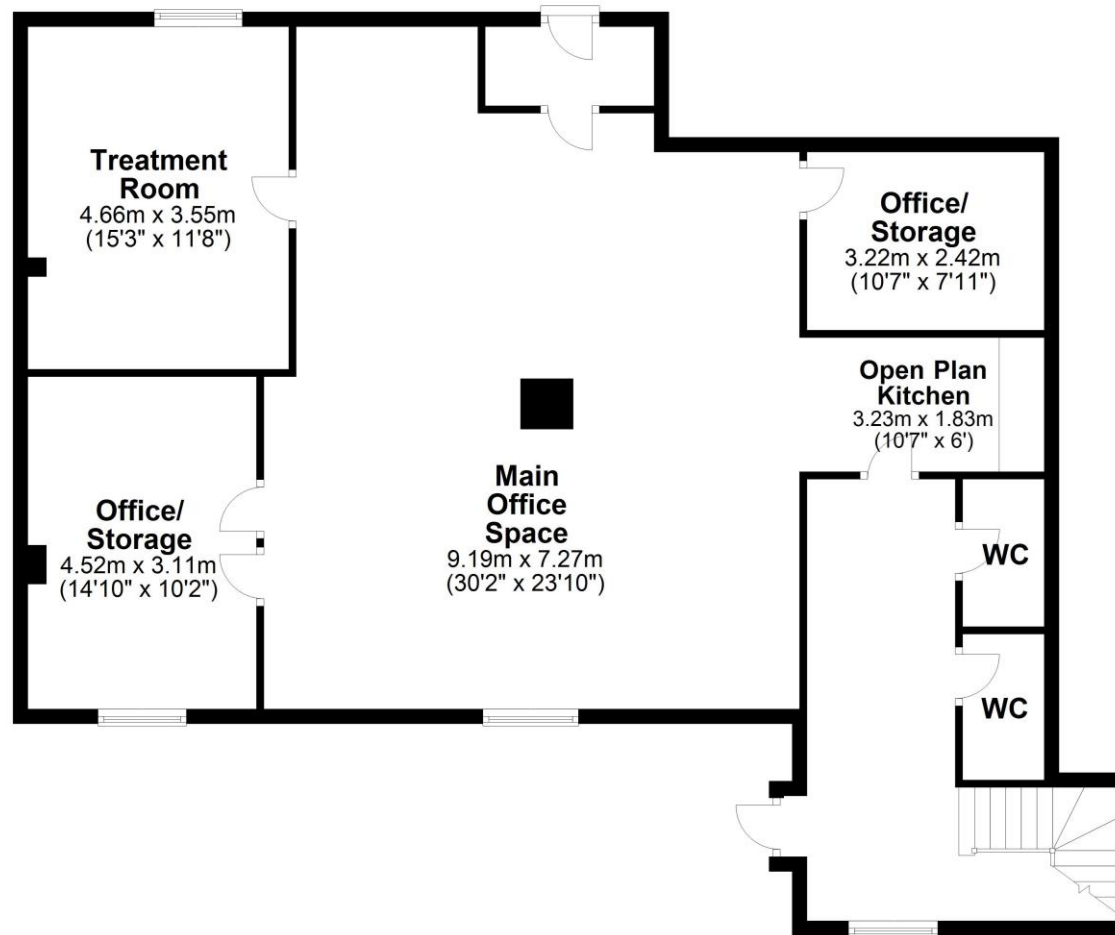


Ground Floor

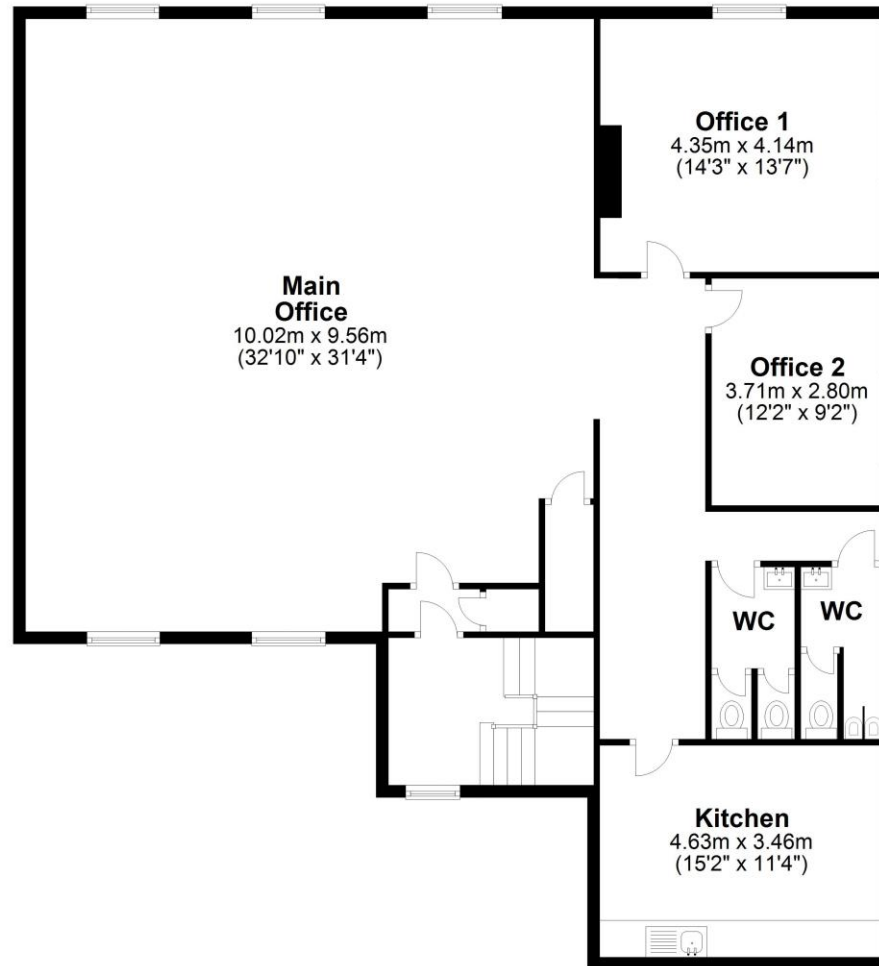
Approx. 130.4 sq. metres (1403.7 sq. feet)



Total area: approx. 130.4 sq. metres (1403.7 sq. feet)
For illustration purposes only - not to scale

First Floor

Approx. 175.2 sq. metres (1886.0 sq. feet)

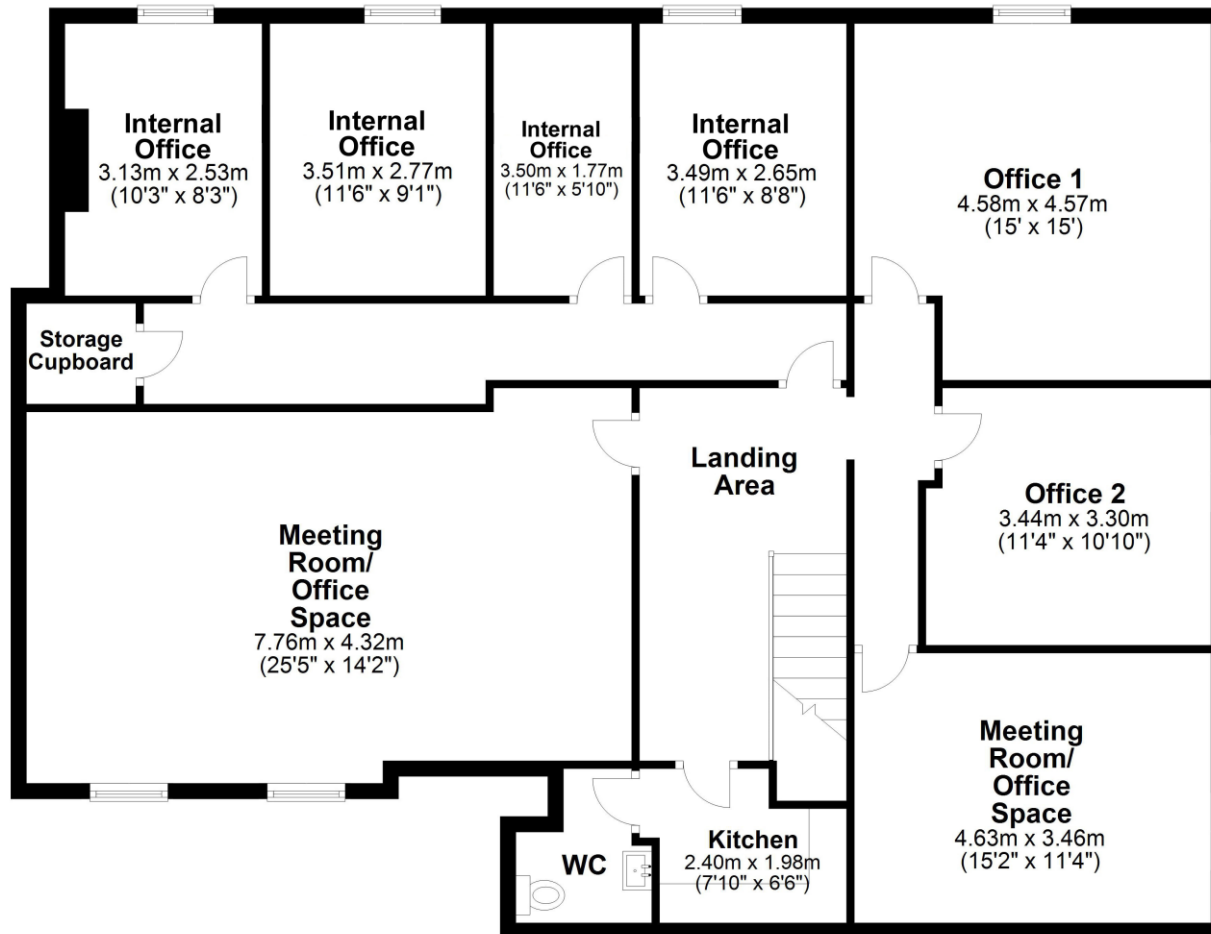


Total area: approx. 175.2 sq. metres (1886.0 sq. feet)

For illustration purposes only - not to scale

Second Floor

Approx. 118.4 sq. metres (1274.8 sq. feet)



Total area: approx. 118.4 sq. metres (1274.8 sq. feet)

For illustration purposes only - not to scale