

5a Lutwyche Road, Catford

£650,000

🛏 2 🚿 1 🛋 2



A well presented two double bedroom mid terraced half house with an almost 50ft south facing garden, located on a sought after road on the borders of Forest and Hill and Catford, close to both station, great schools and local amenities.

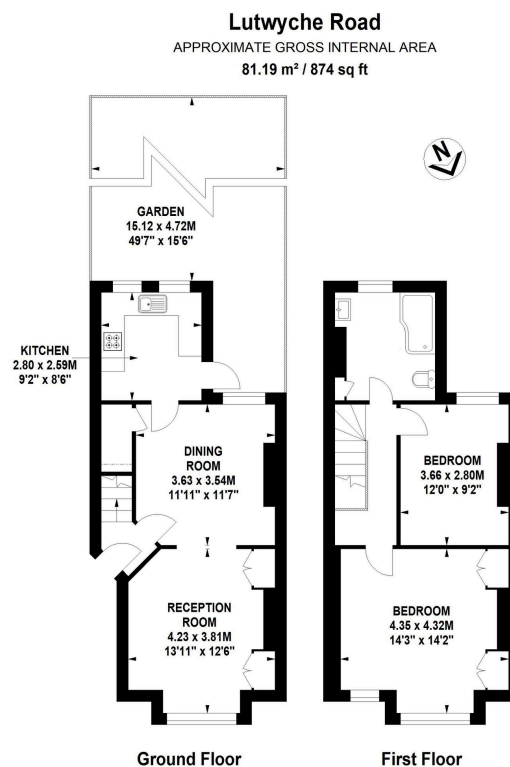
Offering potential to extend in to the loft space to create a third bedroom and second bathroom, the accommodation comprises a through lounge and dining room with exposed wooden floorboards, a modern white fitted kitchen, two double bedrooms and a large family bathroom suite.



To the rear of the house, the south facing garden has a decked seating area at the rear of the house, leading to a secluded lawned garden.

Key Features

- Two Bedroom Half House
- Good Condition Througout
- South Facing Garden
- Double Glazed
- Through Lounge Dining Room
- Modern Kitchen
- Modern Family Bathroom
- Potential to Extend
- EPC D
- Council Tax Band D



SIZE AND DIMENSIONS ARE APPROXIMATE, ACTUAL MAY VARY