

Levendale Road, Forest Hill, London, SE23 2TP

Offers Over £775,000

🛏 5 🚿 2 🚺 2



A beautifully presented five bedroom mid terraced family home, located on a quiet residential street just 0.7 miles of Forest Hill and Catford stations, and close to the outstanding Kilmorie and Rathfern primary schools.

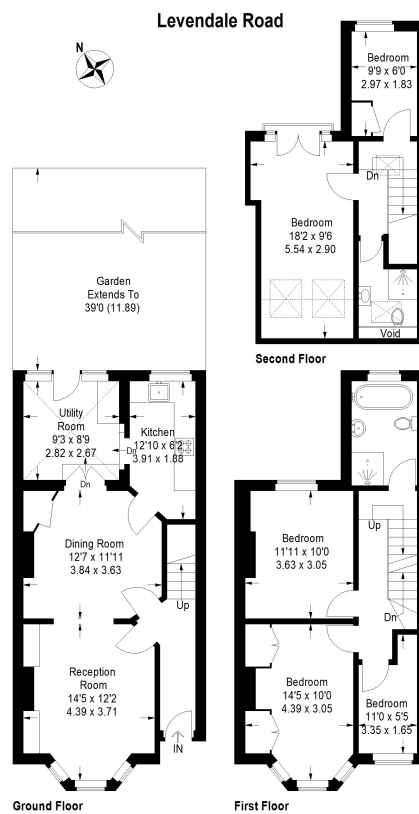
Being sold with no onward chain, the property has been fully loft extended by the current owners and boasts five bedrooms and two modern bathroom suites. Subject to the necessary permissions, there is potential to extend to the rear.



Measuring 1345 sq ft, the accommodation comprises an open plan lounge and dining room with a bay window to the front and feature fireplace, a stylish kitchen and a utility/breakfast room at the rear.

Key Features

- Five Bedrooms
- Chain Free
- Close to Kilmore and Rathfern Primary Schools
- 1345 Sq Ft
- Council Tax Band D
- Two Bathrooms
- 0.7 Miles of Forest Hill and Catford Stations
- Potential to Extend
- EPC Rating D



Approximate Gross Internal Area (Excluding Void)
1345 sq ft / 125.0 sq m

Illustration for identification purposes only,
measurements are approximate.
Drawn for Benjamin Matthews.