



The Complete Property Service

Willmott House, 12 Blacks Road, London W6 9EU T: 0208 222 9958 F: 020 8748 9300 E: sales@willmotts.com W: www.willmotts.com



Bazalgette Court, London, W6 **For Sale**

2 Bedrooms | 1 Reception | 2 Bathrooms | Leasehold | Council Tax Band G

£975,000

Pent House
River View
Historic Building
Galleried Upper Floor
Concierge
Secure 24 hr surveillance
Direct Access to Thames Path
Allocated Parking Space

Building Consultancy & Surveying, Commercial Agency, Commercial Management,
Commercial Investment, Professional Valuations, Residential Lettings, Residential Sales,
Residential Management, Service Charge & Estate Management



Willmotts are proud to present this exceptional penthouse duplex, set atop the renowned Bazalgette Court – a remarkable example of Victorian industrial architecture, meticulously converted into a luxury gated riverside development. Originally constructed as part of a 19th-century pumping station designed by the legendary engineer Sir Joseph Bazalgette – the visionary behind London’s sewer system – this striking building retains its historic grandeur while offering modern sophistication and comfort.

Occupying over 1,100 sq ft across two dramatic floors, the penthouse offers two spacious bedrooms and two bathrooms, including a principal suite with a stylish en suite. The stunning upper-level lounge, with its soaring ceilings and abundant natural light, looks down onto the generous kitchen/diner – a spectacular setting for both everyday living and entertaining. A wraparound roof terrace spans the top floor, framing panoramic views of the River Thames.

This gated development features a dedicated concierge, secure allocated parking with 24-hour surveillance, and private direct access to the Thames Path. Step outside to enjoy picturesque riverside walks, leafy parks, and a selection of acclaimed gastropubs all moments from your door.

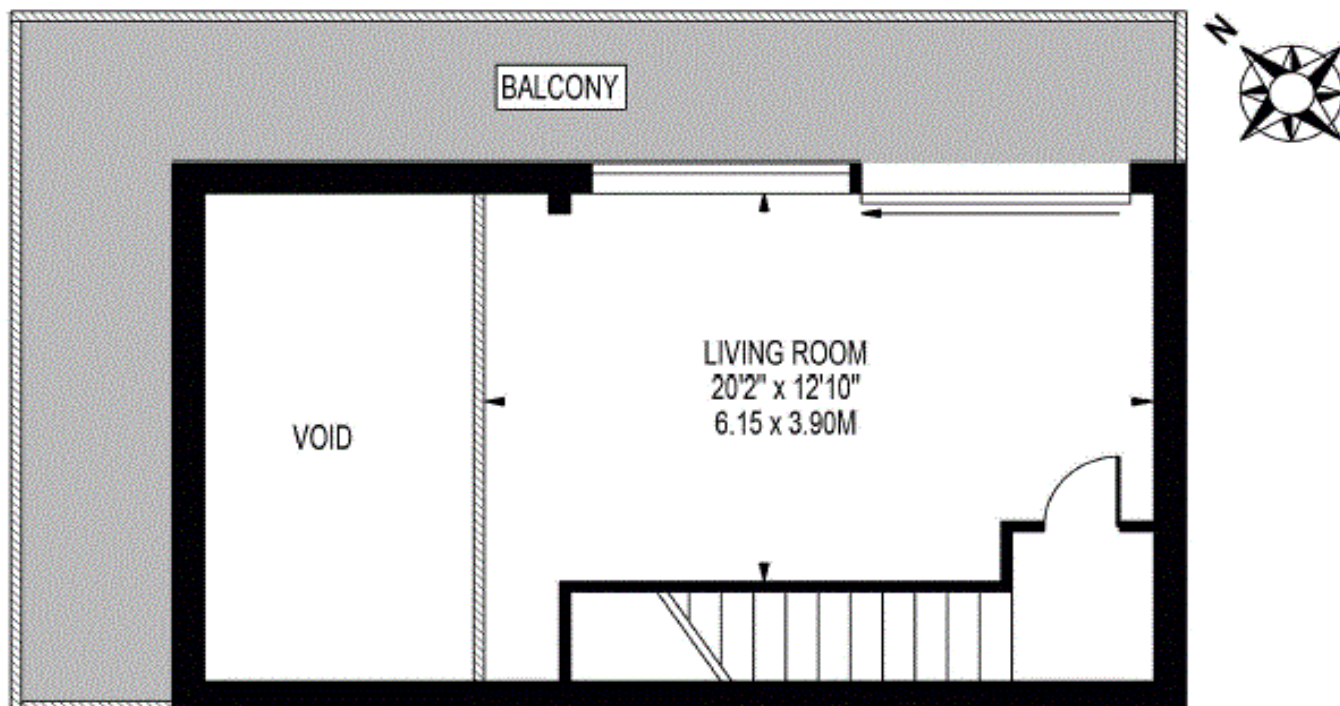
Ideally located, Bazalgette Court is served by three nearby Underground stations – Hammersmith, Ravenscourt Park, and Stamford Brook – offering superb connectivity across London.

Leasehold: 979 Years remaining
Service Charge: £4672.68 PA
Ground Rent: £768.56 PA

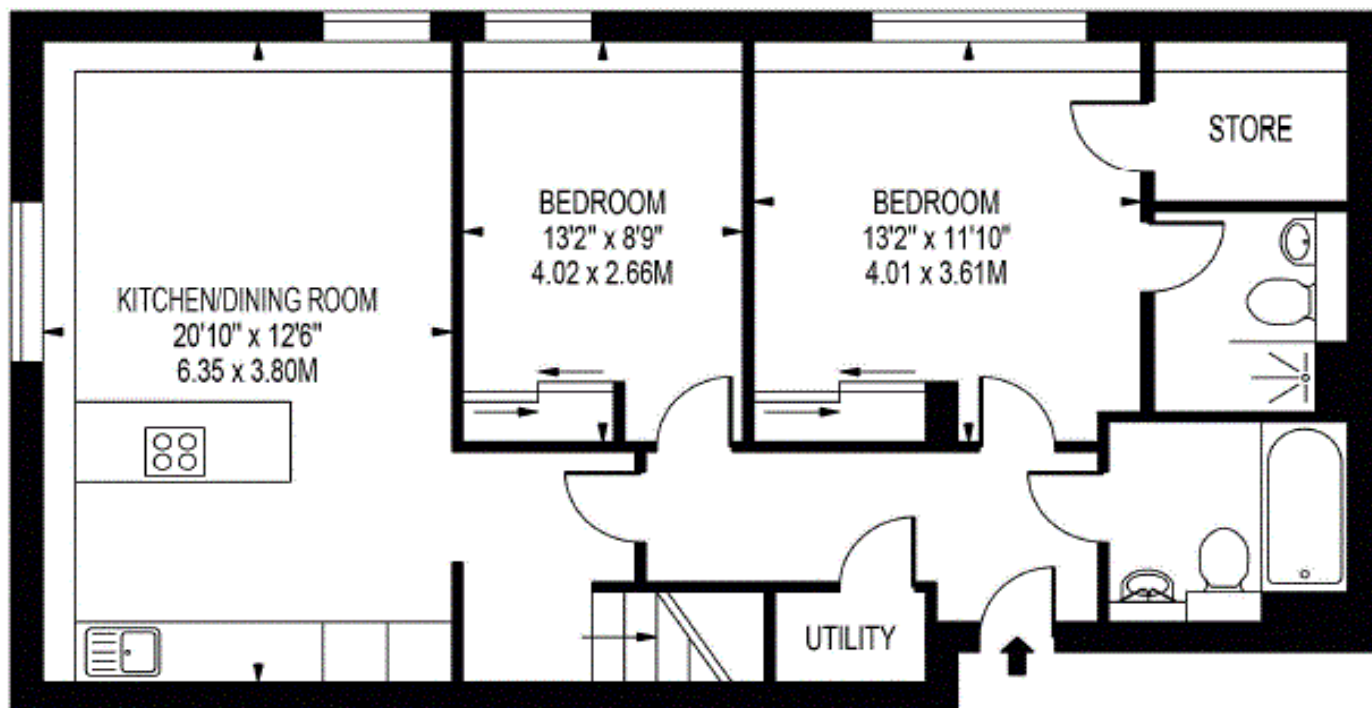


BAZALGETTE COURT

APPROXIMATE GROSS INTERNAL FLOOR AREA: 1135 SQ FT - 105.44 SQ M



FIFTH FLOOR



FOURTH FLOOR

FOR ILLUSTRATION PURPOSES ONLY

THIS FLOOR PLAN SHOULD BE USED AS A GENERAL OUTLINE FOR GUIDANCE ONLY AND DOES NOT CONSTITUTE IN WHOLE OR IN PART AN OFFER OR CONTRACT.
ANY INTENDING PURCHASER OR LESSEE SHOULD SATISFY THEMSELVES BY INSPECTION, SEARCHES, ENQUIRIES AND FULL SURVEY AS TO THE CORRECTNESS OF EACH STATEMENT.
ANY AREAS, MEASUREMENTS OR DISTANCES QUOTED ARE APPROXIMATE AND SHOULD NOT BE USED TO VALUE A PROPERTY OR BE THE BASIS OF ANY SALE OR LET.

Map



EPC

Score	Energy rating	Current	Potential
92+	A		
81-91	B		
69-80	C	79 C	80 C
55-68	D		
39-54	E		
21-38	F		
1-20	G		

Important Notice

1. No description or information given about the property or its value, whether written or verbal or whether or not in these particulars ("Information") may be relied upon as a statement of representation or fact. Neither Willmotts nor its Joint Agents have any authority to make any representation and accordingly any Information given is entirely without responsibility on the part of Willmotts or the seller/lessor.
2. Any photographs (and artist's impressions) show only certain parts of the property at the time they were taken. Any areas, measurements or distances given are approximate only.
3. Any reference to alterations to, or use of any part of the property is not a statement that any necessary planning, building regulations or other consent has been obtained. These matters must be verified by any intending buyer/lessee.
4. Any buyer/lessee must satisfy himself by inspection or otherwise as to the correctness of any Information given.