

# HARRIER WAY

GLOUCESTER

platform  
**home**  
OWNERSHIP

# PLATFORM HOME OWNERSHIP

At Platform Home Ownership, we're passionate about building quality homes for our customers and creating communities that homeowners can be proud of. It's our mission to build a better future for the UK - investing in affordable homes to ensure accessible routes to homeownership for everyone.

Building A Better Future Through New Homes

**INTRODUCTION**  
P. 04

**LOCAL AREA**  
P. 06

**CONNECTIVITY**  
P. 07

**SHARED OWNERSHIP**  
P. 08

**THE DEVELOPMENT**  
P. 09

**AVAILABLE HOMES**  
P. 10

**GET IN TOUCH**





**WELCOME TO HARRIER  
WAY, TWO BEDROOM  
APARTMENTS SITUATED  
ON THE OUTSKIRTS OF  
HARDWICKE.**



# THE WORLD AROUND YOU

Hardwicke is a village and civil parish in Gloucestershire, situated just south of Gloucester along the A38. Once a rural farming community, it has grown into a popular residential area with a mix of modern developments and historic charm. The village is home to St. Nicholas' Church, which dates back to the 12th century, and enjoys a strong sense of community with local pubs, schools, and green spaces. Its convenient location near the M5 makes it ideal for commuters while still offering a peaceful countryside feel.

HARRIER WAY  
IS PERFECTLY  
CONNECTED IN  
EVERY DIRECTION  
MAKING IT A HOME  
BUYERS DREAM

5 MILES

GLOUCESTER

10 MILES

STROUD

15 MILES

CHELTENHAM

30 MILES

BRISTOL

## LOCAL AMENITIES

SUPERMARKET	5 MIN (CAR)	1.8 MILES
DOCTORS	4 MIN (CAR)	1.5 MILES
GYM	5 MIN (CAR)	1.4 MILES
LEISURE CENTRE	13 MIN (CAR)	4.5 MILES

## PLACES OF INTEREST

ST NICHOLAS CHURCH	6 MIN (CAR)	2.6 MILES
THE PILOT INN	7 MIN (CAR)	2.5 MILES
GLOUCESTER QUAYS	14 MIN (CAR)	4.8 MILES
ROBINSWOOD HILLCOUNTRY PARK	11 MIN (CAR)	4.2 MILES

## CONNECTIVITY

GLOUCESTER TRAIN STATION	16 MIN (CAR)	5.7 MILES
A38	5 MIN (CAR)	2.1 MILES
M5	6 MIN (CAR)	2.4 MILES
BUS STOP	3 MIN (WALK)	0.1 MILES

## EDUCATION

HUNTS GROVE PRIMARY ACADEMY	1 MIN (WALK)	110 YARDS
HARDWICKE PAROCHIAL PRIMARY SCHOOL	7 MIN (CAR)	2.1 MILES
SEVERN VALE SCHOOL	6 MIN (CAR)	2.2 MILES
GLOUCESTER UNIVERSITY	23 MIN (CAR)	14.9 MILES

Travel times are all shown in minutes and are representative of driving time. All times and distances are taken from [google.com/maps](https://www.google.com/maps)



# ABOUT SHARED OWNERSHIP

## BUY YOUR NEW HOME THROUGH SHARED OWNERSHIP

Your dream home is more affordable than you may think with Shared Ownership. Shared Ownership means you can purchase part of your home and then pay rent on the remaining share. Typically, you can purchase 40-75% of your home, but lower shares are available. What's more, Shared Ownership is flexible, and allows you to increase your level of ownership over time if you choose to.

Whatever your looking for, we have a wide selection of homes perfect for whatever your needs.

Buying through Shared Ownership at this development means you can purchase between 10 – 75% of your property and pay a subsidised rent on the remaining share you don't own.

### HOW IT WORKS

- 1 BUY THE FIRST SHARE IN YOUR NEW HOME.
- 2 PAY RENT ON THE REMAINING SHARE
- 3 BUY MORE SHARES IN YOUR HOME LATER

### DID YOU KNOW?

Shared Ownership offers great flexibility, and you can purchase more of your home through staircasing whenever you are ready too.

[CLICK HERE TO LEARN](#)

[MORE BY READING](#)

[OUR SHARED OWNERSHIP GUIDE](#)

# 38 HARRIER WAY & 40 HARRIER WAY

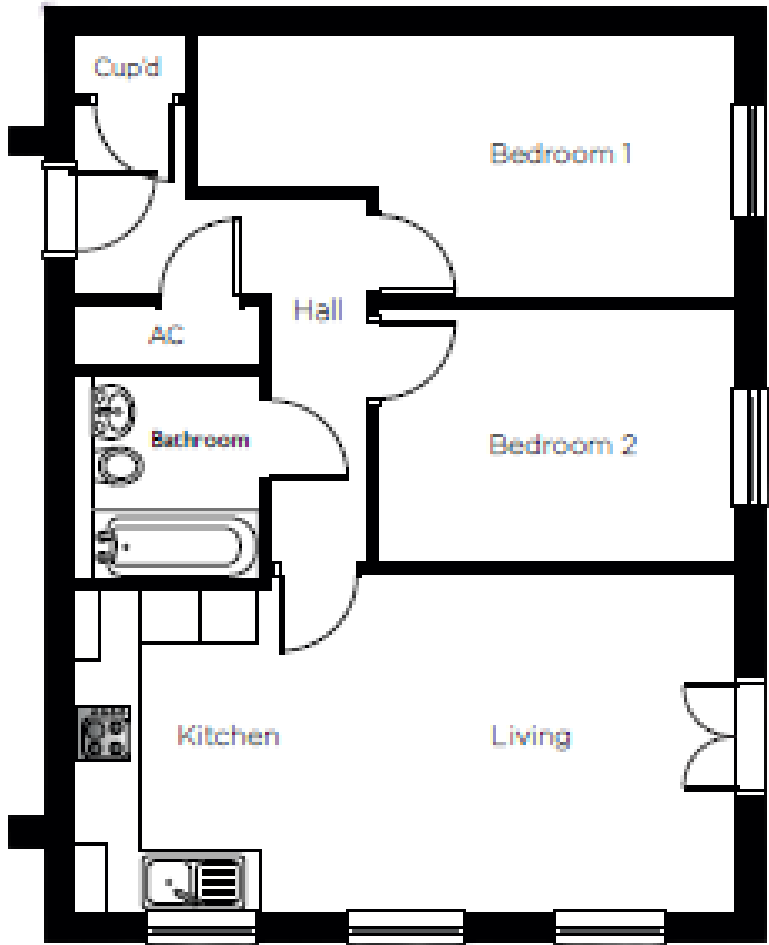
MODERN TWO BEDROOM APARTMENTS,  
EMBRACING FLEXIBLE LIVING.

38 Harrier Way presents a rare opportunity to secure a home in Gloucestershire, where there is a limited offering of homes through the Shared Ownership scheme. Situated on the outskirts of Hardwicke, the location offers the perfect mix of town and tranquillity.

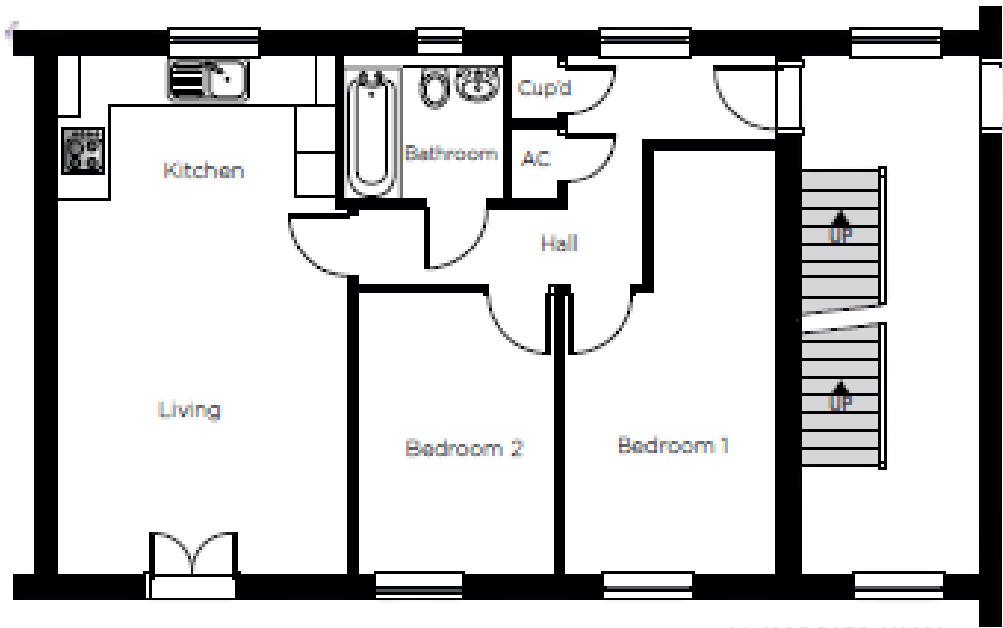




# THE DETAILS



38 HARRIER WAY



40 HARRIER WAY

## SPECIFICATION

### KITCHEN

- Modern fitted kitchen
- Stainless steel kitchen sink
- Plumbing for washing machine
- Extractor fan
- Wall tiling
- Vinyl flooring

### BATHROOM

- Wall tiling
- Extractor fan
- Electric shower over bath
- Vinyl flooring

### GENERAL

- Ground/First floor apartment
- Gas central heating
- One allocated car parking space
- Door entry system
- Close proximity to town centre
- Easy access to transport links
- New Shared Ownership Model
- Remaining NHBC warranty

This image is from an imaginary viewpoint within an open space area. Its purpose is to give a feel for the development, not an accurate description of each property. The illustration shows a typical Platform Home Ownership home of this type, but there are, however, variances from site to site. external materials, finishes, landscaping, windows and the position of garages, (where provided) may vary throughout the development. Properties may also be built handed (mirror image). Please ask for further details.







# HARRIER WAY, HARDWICKE

ADDRESS	100% SHARE	40% SHARE VALUE	MONTHLY RENT	SERVICE CHARGE
38 Harrier Way, Hardwicke, Gloucester, GL2 4EE.	£180,000	£72,000	£247.50	£75.64
40 Harrier Way, Hardwicke, Gloucester, GL2 4EE.	£180,000	£72,000	£247.50	£75.64





Platform Home Ownership

@platformhomeownership

@platformnewhome

## GET IN TOUCH

**0333 200 7304**  
**sales@platformhg.com**

Platform Home Ownership have taken every effort to ensure that these documents are accurate and represent the properties available. Platform Home Ownership and the developer may in their efforts to improve design reserve the right to alter site plans, floorplans, elevations and specifications without prior notice. maps shown are not to scaled and for illustrative purposes only. distances are taken from google.co.uk/maps. Information is correct at the time it was published -October 2024. For more information please visit us website at [www.platformhomeownership.com](http://www.platformhomeownership.com)