

# NASEBY SQUARE

MARKET HARBOROUGH

platform   
**home**  
OWNERSHIP

# PLATFORM HOME OWNERSHIP

At Platform Home Ownership, we're passionate about building quality homes for our customers and creating communities that homeowners can be proud of. It's our mission to build a better future for the UK - investing in affordable homes to ensure accessible routes to homeownership for everyone.

*Building A Better Future Through New Homes*

**INTRODUCTION**  
P. 04

**LOCAL AREA**  
P. 06

**CONNECTIVITY**  
P. 07

**SHARED OWNERSHIP**  
P. 08

**THE DEVELOPMENT**  
P. 09

**AVAILABLE HOMES**  
P. 10

**GET IN TOUCH**





**WELCOME TO  
NASEBY SQUARE,  
A NEW DESTINATION  
IN AN EXCITING  
MARKET TOWN.**



# THE WORLD AROUND YOU

Market Harborough is a large market town filled with excellent amenities, a rich heritage and exceptional connectivity, sat between Leicester, Northampton and Kettering. Filled with boutique stores, foodie hotspots, highly-rated schools and a rapidly growing cultural scene, Market Harborough is ideal for residents that want a countryside retreat full of community spirit but with a metropolitan feel.

NASEBY SQUARE  
IS PERFECTLY  
CONNECTED IN  
EVERY DIRECTION  
MAKING IT A HOME  
BUYERS DREAM

12 MILES  
KETTERING

16 MILES  
LEICESTER

18 MILES  
NORTHAMPTON

36 MILES  
PETERBOROUGH

## LOCAL AMENITIES

GYM	4 MINUTES (CAR)	1.1 MILES
DOCTORS	4 MINUTES (CAR)	1.2 MILES
LEISURE CERNTRE	3 MINUTES (CAR)	1.0 MILES
SUPERMARKET	3 MINUTES (CAR)	0.6 MILES

## PLACES OF INTEREST

WELLAND PARK	3 MINUTES (CAR)	1.0 MILES
HARBOROUGH MUSEUM	3 MINUTES (CAR)	0.6 MILES
MARKET HARBOROUGH GOLF CLUB	4 MINUTES (CAR)	1.4 MILES
HARBOROUGH TOWN FOOTBALL CLUB	4 MINUTES (CAR)	1.0 MILES

## CONNECTIVITY

MARKET HARBOROUGH TRAIN STATION	4 MINUTES (CAR)	0.9 MILES
A14	20 MINUTES (CAR)	16 MILES
LEICESTER TRAIN STATION	38 MINUTES (TRAIN)	15 MILES
LONDON ST PANCRAS	90 MINUTES (TRAIN)	87 MILES

## EDUCATION

LITTLE BOWDEN PRIMARY SCHOOL	3 MINUTES (CAR)	0.8 MILES
FARNDEN FIELDS PRIMARY SCHOOL	4 MINUTES (CAR)	1.0 MILES
MARKET HARBOROUGH COE ACADEMY	4 MINUTES (CAR)	1.0 MILES
GREAT BOWDEN ACADEMY	7 MINUTES (CAR)	2.0 MILES

Travel times are all shown in minutes and are representative of driving time. All times and distances are taken from [google.com/maps](https://www.google.com/maps)



# ABOUT SHARED OWNERSHIP

## BUY YOUR NASEBY SQUARE HOME THROUGH SHARED OWNERSHIP

Your dream home is more affordable than you may think with Shared Ownership. Shared Ownership means you can purchase part of your home and then pay rent on the remaining share. Typically, you can purchase 40-75% of your home, but lower shares are available. What's more, Shared Ownership is flexible, and allows you to increase your level of ownership over time if you choose to.

Whatever your looking for, we have a wide selection of homes perfect for whatever your needs.

Buying through Shared Ownership at this development means you can purchase between 25 - 75% of your property and pay a subsidised rent on the remaining share you don't own.

### HOW IT WORKS

- 1 BUY THE FIRST SHARE IN YOUR NEW HOME.
- 2 PAY RENT ON THE REMAINING SHARE
- 3 BUY MORE SHARES IN YOUR HOME LATER

### DID YOU KNOW?

Shared Ownership offers great flexibility, and you can purchase more of your home through staircasing whenever you are ready too.

[CLICK HERE TO LEARN MORE BY READING OUR SHARED OWNERSHIP GUIDE](#)

# NASEBY SQUARE

MARKET HARBOURGH

## A STUNNING COLLECTION OF TWO AND THREE-BEDROOM HOMES AVAILABLE THROUGH SHARED OWNERSHIP.

Naseby Square doesn't just represent a new standard of living for the local area but a step forward for the local community. The development itself comprises 38 homes, leveraging modern fixtures and fittings to ensure a contemporary lifestyle. For buyers, Naseby Square is the opportunity to live in a modern, sustainable development at the heart of a town filled with history and character.

# GET TO KNOW NASEBY SQUARE

MARKET HARBOUROUGH

Naseby Square is an exclusive collection of two and three-bedroom homes offering new opportunities for first time buyers, downsizers and growing families.



**THE ASTLEY**  
2 Bedroom Home



**THE RUPERT**  
3 Bedroom Home



**THE MONTAGU**  
3 Bedroom Home



**THE CROMWELL**  
2 Bedroom Home



**THE IRETON**  
3 Bedroom Home



**THE SKIPPON**  
3 Bedroom Home



**THE FAIRFAX**  
3 Bedroom Home



**THE LANGDALE**  
3 Bedroom Home







This image is from an imaginary viewpoint within an open space area. Its purpose is to give a feel for the development, not an accurate description of each property. The illustration shows a typical Platform Home Ownership home of this type, but there are, however, variances from site to site. External materials, finishes, landscaping, windows and the position of garages, (where provided) may vary throughout the development. Properties may also be built handed (mirror image). Please ask for further details.

END OF TERRACE

THE CROMWELL

PLOTS 8 & 10

TOTAL 820 SQ FT

GROUND

FIRST

Kitchen/Dining	184 sq ft	17.1 m2
Living	133 sq ft	12.4 m2
Bedroom 1	154 sq ft	14.3 m2
Bedroom 2	125 sq ft	11.6 m2

SPECIFICATION

Kitchen

- Modern fitted kitchen
- Stainless steel integral oven, hob & extract hood
- Space for washing machine fridge/freezer
- Vinyl flooring to kitchen and WC
- Open plan kitchen/dining

Bathroom

- Family bathroom with shower over bath
- Three piece white suite
- Complimentary wall tiling
- Vinyl flooring to bathroom

General

- Market Harborough is a key market town in Leicestershire between Leicester, Northampton and Kettering.
- Excellent links to A14, M1 & M6.
- 2 parking spaces per property
- 10 Year build warranty





This image is from an imaginary viewpoint within an open space area. Its purpose is to give a feel for the development, not an accurate description of each property. The illustration shows a typical Platform Home Ownership home of this type, but there are, however, variances from site to site. External materials, finishes, landscaping, windows and the position of garages, (where provided) may vary throughout the development. Properties may also be built handed (mirror image). Please ask for further details.

THE CROMWELL

SEMI DETACHED

THE CROMWELL

PLOTS 2 & 20

TOTAL 820 SQ FT

GROUND

FIRST

SPECIFICATION		
<strong>Kitchen</strong>		
<ul style="list-style-type: none"><li>Modern fitted kitchen</li><li>Stainless steel integral oven, hob &amp; extract hood</li><li>Space for washing machine fridge/freezer</li><li>Vinyl flooring to kitchen and WC</li><li>Open plan kitchen/dining</li></ul>		
<strong>Bathroom</strong>		
<ul style="list-style-type: none"><li>Family bathroom with shower over bath</li><li>Three piece white suite</li><li>Complimentary wall tiling</li><li>Vinyl flooring to bathroom</li></ul>		
<strong>General</strong>		
<ul style="list-style-type: none"><li>Market Harborough is a key market town in Leicestershire between Leicester, Northampton and Kettering.</li><li>Excellent links to A14, M1 &amp; M6.</li><li>2 parking spaces per property</li><li>10 Year build warranty</li></ul>		
Kitchen/Dining	184 sq ft	17.1 m2
Living	133 sq ft	12.4 m2
Bedroom 1	154 sq ft	14.3 m2
Bedroom 2	125 sq ft	11.6 m2





This image is from an imaginary viewpoint within an open space area. Its purpose is to give a feel for the development, not an accurate description of each property. The illustration shows a typical Platform Home Ownership home of this type, but there are, however, variances from site to site. External materials, finishes, landscaping, windows and the position of garages, (where provided) may vary throughout the development. Properties may also be built handed (mirror image). Please ask for further details.

SEMI DETACHED

THE CROMWELL

PLOTS 34 & 35

TOTAL 820 SQ FT

GROUND

FIRST

SPECIFICATION		
<b>Kitchen</b>		
<ul style="list-style-type: none"><li>Modern fitted kitchen</li><li>Stainless steel integral oven, hob &amp; extract hood</li><li>Space for washing machine fridge/freezer</li><li>Vinyl flooring to kitchen and WC</li><li>Open plan kitchen/dining</li></ul>		
<b>Bathroom</b>		
<ul style="list-style-type: none"><li>Family bathroom with shower over bath</li><li>Three piece white suite</li><li>Complimentary wall tiling</li><li>Vinyl flooring to bathroom</li></ul>		
<b>General</b>		
<ul style="list-style-type: none"><li>Market Harborough is a key market town in Leicestershire between Leicester, Northampton and Kettering.</li><li>Excellent links to A14, M1 &amp; M6.</li><li>2 parking spaces per property</li><li>10 Year build warranty</li></ul>		
Kitchen/Dining	184 sq ft	17.1 m2
Living	133 sq ft	12.4 m2
Bedroom 1	154 sq ft	14.3 m2
Bedroom 2	125 sq ft	11.6 m2





This image is from an imaginary viewpoint within an open space area. Its purpose is to give a feel for the development, not an accurate description of each property. The illustration shows a typical Platform Home Ownership home of this type, but there are, however, variances from site to site. External materials, finishes, landscaping, windows and the position of garages, (where provided) may vary throughout the development. Properties may also be built handed (mirror image). Please ask for further details.

THE ASTLEY

MIDDLE TERRACE

THE ASTLEY

PLOTS 9

TOTAL 884 SQ FT

GROUND

FIRST

SPECIFICATION		
<strong>Kitchen</strong>		
<ul style="list-style-type: none"><li>Modern fitted kitchen</li><li>Stainless steel integral oven, hob &amp; extract hood</li><li>Space for washing machine fridge/freezer</li><li>Vinyl flooring to kitchen and WC</li><li>Open plan kitchen/dining</li></ul>		
<strong>Bathroom</strong>		
<ul style="list-style-type: none"><li>Family bathroom with shower over bath</li><li>Three piece white suite</li><li>Complimentary wall tiling</li><li>Vinyl flooring to bathroom</li></ul>		
<strong>General</strong>		
<ul style="list-style-type: none"><li>Market Harborough is a key market town in Leicestershire between Leicester, Northampton and Kettering.</li><li>Excellent links to A14, M1 &amp; M6.</li><li>2 parking spaces per property</li><li>10 Year build warranty</li></ul>		
Kitchen/Dining	208 sq ft	19.3 m2
Living	138 sq ft	12.8 m2
Bedroom 1	163 sq ft	15.1 m2
Bedroom 2	136 sq ft	12.6 m2





This image is from an imaginary viewpoint within an open space area. Its purpose is to give a feel for the development, not an accurate description of each property. The illustration shows a typical Platform Home Ownership home of this type, but there are, however, variances from site to site. External materials, finishes, landscaping, windows and the position of garages, (where provided) may vary throughout the development. Properties may also be built handed (mirror image). Please ask for further details.

# THE LANGDALE

PLOTS 36 & 37  
TOTAL 951 SQ FT

GROUND

FIRST

SPECIFICATION		
<strong>Kitchen</strong>		
<ul style="list-style-type: none"><li>Modern fitted kitchen</li><li>Stainless steel integral oven, hob &amp; extract hood</li><li>Space for washing machine fridge/freezer</li><li>Vinyl flooring to kitchen and WC</li><li>Open plan kitchen/dining</li></ul>		
<strong>Bathroom</strong>		
<ul style="list-style-type: none"><li>Family bathroom with shower over bath</li><li>Three piece white suite</li><li>Complimentary wall tiling</li><li>Vinyl flooring to bathroom</li></ul>		
<strong>General</strong>		
<ul style="list-style-type: none"><li>Market Harborough is a key market town in Leicestershire between Leicester, Northampton and Kettering.</li><li>Excellent links to A14, M1 &amp; M6.</li><li>2 parking spaces per property</li><li>10 Year build warranty</li></ul>		
Kitchen/Dining	172 sq ft	15.9 m2
Living	174 sq ft	16.1 m2
Bedroom 1	112 sq ft	10.4 m2
Bedroom 2	91 sq ft	8.4 m2
Bedroom 3	80 sq ft	7.4 m2





This image is from an imaginary viewpoint within an open space area. Its purpose is to give a feel for the development, not an accurate description of each property. The illustration shows a typical Platform Home Ownership home of this type, but there are, however, variances from site to site. External materials, finishes, landscaping, windows and the position of garages, (where provided) may vary throughout the development. Properties may also be built handed (mirror image). Please ask for further details.

TERRACE

THE SKIPPON

PLOTS 3, 4 & 5

TOTAL 957 SQ FT

GROUND

FIRST

SPECIFICATION		
<b>Kitchen</b>		
<ul style="list-style-type: none"><li>Modern fitted kitchen</li><li>Stainless steel integral oven, hob &amp; extract hood</li><li>Space for washing machine fridge/freezer</li><li>Vinyl flooring to kitchen and WC</li><li>Open plan kitchen/dining</li></ul>		
<b>Bathroom</b>		
<ul style="list-style-type: none"><li>Family bathroom with shower over bath</li><li>Three piece white suite</li><li>Complimentary wall tiling</li><li>Vinyl flooring to bathroom</li></ul>		
<b>General</b>		
<ul style="list-style-type: none"><li>Market Harborough is a key market town in Leicestershire between Leicester, Northampton and Kettering.</li><li>Excellent links to A14, M1 &amp; M6.</li><li>2 parking spaces per property</li><li>10 Year build warranty</li></ul>		
Kitchen/Dining	177 sq ft	16.4 m2
Living	125 sq ft	11.6 m2
Bedroom 1	129 sq ft	11.9 m2
Bedroom 2	120 sq ft	11.1 m2
Bedroom 3	67 sq ft	6.2 m2





This image is from an imaginary viewpoint within an open space area. Its purpose is to give a feel for the development, not an accurate description of each property. The illustration shows a typical Platform Home Ownership home of this type, but there are, however, variances from site to site. External materials, finishes, landscaping, windows and the position of garages, (where provided) may vary throughout the development. Properties may also be built handed (mirror image). Please ask for further details.

SEMI DETACHED

THE SKIPPON

PLOTS 6 & 7

TOTAL 957 SQ FT

GROUND

FIRST

SPECIFICATION		
<strong>Kitchen</strong>		
<ul style="list-style-type: none"><li>Modern fitted kitchen</li><li>Stainless steel integral oven, hob &amp; extract hood</li><li>Space for washing machine fridge/freezer</li><li>Vinyl flooring to kitchen and WC</li><li>Open plan kitchen/dining</li></ul>		
<strong>Bathroom</strong>		
<ul style="list-style-type: none"><li>Family bathroom with shower over bath</li><li>Three piece white suite</li><li>Complimentary wall tiling</li><li>Vinyl flooring to bathroom</li></ul>		
<strong>General</strong>		
<ul style="list-style-type: none"><li>Market Harborough is a key market town in Leicestershire between Leicester, Northampton and Kettering.</li><li>Excellent links to A14, M1 &amp; M6.</li><li>2 parking spaces per property</li><li>10 Year build warranty</li></ul>		
Kitchen/Dining	177 sq ft	16.4 m2
Living	125 sq ft	11.6 m2
Bedroom 1	129 sq ft	11.9 m2
Bedroom 2	120 sq ft	11.1 m2
Bedroom 3	67 sq ft	6.2 m2





This image is from an imaginary viewpoint within an open space area. Its purpose is to give a feel for the development, not an accurate description of each property. The illustration shows a typical Platform Home Ownership home of this type, but there are, however, variances from site to site. External materials, finishes, landscaping, windows and the position of garages, (where provided) may vary throughout the development. Properties may also be built handed (mirror image). Please ask for further details.

# THE IRETON

LOTS 19  
TOTAL 1,006 SQ FT

GROUND

FIRST

SPECIFICATION

Kitchen

- Modern fitted kitchen
- Stainless steel integral oven, hob & extract hood
- Space for washing machine fridge/freezer
- Vinyl flooring to kitchen and WC
- Open plan kitchen/dining

Bathroom

- Family bathroom with shower over bath
- Three piece white suite
- Complimentary wall tiling
- Vinyl flooring to bathroom

General

- Market Harborough is a key market town in Leicestershire between Leicester, Northampton and Kettering.
- Excellent links to A14, M1 & M6.
- 2 parking spaces per property
- 10 Year build warranty

Kitchen/Dining	182 sq ft	16.9 m2
Living	182 sq ft	16.9 m2
Bedroom 1	154 sq ft	14.3 m2
Bedroom 2	109 sq ft	10.1 m2
Bedroom 3	83 sq ft	7.7 m2



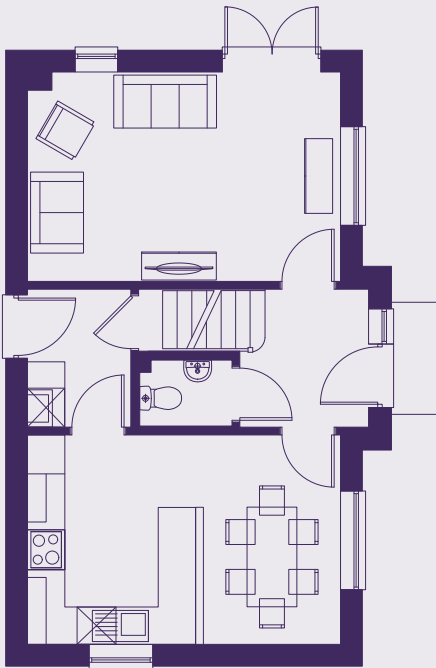


This image is from an imaginary viewpoint within an open space area. Its purpose is to give a feel for the development, not an accurate description of each property. The illustration shows a typical Platform Home Ownership home of this type, but there are, however, variances from site to site. External materials, finishes, landscaping, windows and the position of garages, (where provided) may vary throughout the development. Properties may also be built handed (mirror image). Please ask for further details.

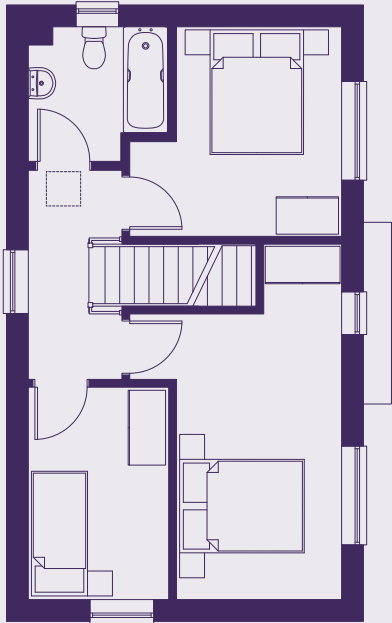
# THE RUPERT

PLOTS 29 & 30  
TOTAL 1,006 SQ FT

GROUND



FIRST



## SPECIFICATION

### Kitchen

- Modern fitted kitchen
- Stainless steel integral oven, hob & extract hood
- Space for washing machine fridge/freezer
- Vinyl flooring to kitchen and WC
- Open plan kitchen/dining

### Bathroom

- Family bathroom with shower over bath
- Three piece white suite
- Complimentary wall tiling
- Vinyl flooring to bathroom

### General

- Market Harborough is a key market town in Leicestershire between Leicester, Northampton and Kettering.
- Excellent links to A14, M1 & M6.
- 2 parking spaces per property
- 10 Year build warranty

Kitchen/Dining	182 sq ft	16.9 m2
Living	182 sq ft	16.9 m2
Bedroom 1	154 sq ft	14.3 m2
Bedroom 2	109 sq ft	10.1 m2
Bedroom 3	83 sq ft	7.7 m2





This image is from an imaginary viewpoint within an open space area. Its purpose is to give a feel for the development, not an accurate description of each property. The illustration shows a typical Platform Home Ownership home of this type, but there are, however, variances from site to site. External materials, finishes, landscaping, windows and the position of garages, (where provided) may vary throughout the development. Properties may also be built handed (mirror image). Please ask for further details.

THE FAIRFAX

# THE FAIRFAX

PLOT 1  
TOTAL 1,045 SQ FT

GROUND

FIRST

SPECIFICATION

Kitchen

- Modern fitted kitchen
- Stainless steel integral oven, hob & extract hood
- Space for washing machine fridge/freezer
- Vinyl flooring to kitchen and WC
- Open plan kitchen/dining

Bathroom

- Family bathroom with shower over bath
- Three piece white suite
- Complimentary wall tiling
- Vinyl flooring to bathroom

General

- Market Harborough is a key market town in Leicestershire between Leicester, Northampton and Kettering.
- Excellent links to A14, M1 & M6.
- 2 parking spaces per property
- 10 Year build warranty

Kitchen/Dining	207 sq ft	19.2 m2
Living	153 sq ft	14.2 m2
Bedroom 1	145 sq ft	13.4 m2
Bedroom 2	125 sq ft	11.6 m2
Bedroom 3	81 sq ft	7.5 m2





This image is from an imaginary viewpoint within an open space area. Its purpose is to give a feel for the development, not an accurate description of each property. The illustration shows a typical Platform Home Ownership home of this type, but there are, however, variances from site to site. External materials, finishes, landscaping, windows and the position of garages, (where provided) may vary throughout the development. Properties may also be built handed (mirror image). Please ask for further details.

# THE MONTAGU

PLOT 38  
TOTAL 1,045 SQ FT

GROUND

FIRST

SPECIFICATION		
<strong>Kitchen</strong>		
<ul style="list-style-type: none"><li>Modern fitted kitchen</li><li>Stainless steel integral oven, hob &amp; extract hood</li><li>Space for washing machine fridge/freezer</li><li>Vinyl flooring to kitchen and WC</li><li>Open plan kitchen/dining</li></ul>		
<strong>Bathroom</strong>		
<ul style="list-style-type: none"><li>Family bathroom with shower over bath</li><li>Three piece white suite</li><li>Complimentary wall tiling</li><li>Vinyl flooring to bathroom</li></ul>		
<strong>General</strong>		
<ul style="list-style-type: none"><li>Market Harborough is a key market town in Leicestershire between Leicester, Northampton and Kettering.</li><li>Excellent links to A14, M1 &amp; M6.</li><li>2 parking spaces per property</li><li>10 Year build warranty</li></ul>		
Kitchen/Dining	207 sq ft	19.2 m2
Living	153 sq ft	14.2 m2
Bedroom 1	145 sq ft	13.4 m2
Bedroom 2	125 sq ft	11.6 m2
Bedroom 3	81 sq ft	7.5 m2



## Market Harborough

## HOUSE PRICES FOR ALL PLOTS AVAILABLE

PLOT	TYPE	ADDRESS	HANDOVER	100% SHARE	40% SHARE VALUE	MONTHLY RENT
						SSTC
						SSTC
						SSTC
						SSTC
						SSTC
						SSTC
						SSTC
						SSTC
						SSTC
						SSTC
						£541.41
						SSTC

[illegible]





NASEBY SQUARE,  
MARKET HARBOROUGH,  
LEICESTERSHIRE, LE16 9PA



PLATFORMHOMEOWNERSHIP



@PLATFORMHOMEOWNERSHIP



@PLATFORMNEWHOME

GET IN TOUCH

**0333 200 7304**

**sales@platformhg.com**

SATNAV

**LE16 9PA**

Platform Home Ownership have taken every effort to ensure that these documents are accurate and represent the properties available. Platform Home Ownership and the developer may in their efforts to improve design reserve the right to alter site plans, floorplans, elevations and specifications without prior notice. Maps shown are not to scaled and for illustrative purposes only. Distances are taken from [google.co.uk/maps](https://www.google.co.uk/maps). Information is correct at the time it was published - **October 2024**. For more information please visit us website at [www.platformhomeownership.com](https://www.platformhomeownership.com)