

CARTERTON, OXFORDSHIRE, OX18 3RL

# THE FALCONS



PRESENTED TO YOU BY  
PLATFORM HOME OWNERSHIP



# WELCOME TO THE FALCONS

A brand new development nestled amongst stunning countryside in a region filled with heritage. This development of 2, 3 and 4-bedroom homes is located in Carterton in Oxfordshire - one of the area's newest towns - offering the perfect blend of modern living and the tranquillity of the countryside. Located between Oxford and Cirencester, The Falcons represents high-quality living in a beautiful part of the country, ideal for families or couples that want to settle down and get their foot on the property ladder.

# WELCOME TO

Carterton is the second largest town in West Oxfordshire and one of the newest in the entire county. Just 18 miles from Oxford, Carterton is a safe, picturesque and vibrant market town that has everything a home buyer could dream of.



# CARTERTON

# A HISTORIC

# MARKET TOWN



6

7

With a rich history of hosting market fairs, it's now recognised as one of the fastest growing towns in the South East. Home to over 14,000, Carterton has quickly developed into a modern, bustling town centre that has a range of shops, pubs, restaurants, leisure activities, exceptional schools and a lower crime rate than the Oxfordshire average.

Independent businesses, friendly locals and a thriving high street give this market town a cosy, community atmosphere and if you're looking for things to do, there's plenty of culture to soak up, such as the popular Cotswold Wildlife Park & Gardens. It's this vibrant environment that led to Carterton being voted the best place to live in West Oxfordshire in 2021.

# A KEY LOCATION

## AMENITIES

	MILES	MINUTES
Morrisons .....	0.5	2
Pub (The Beehive) .....	0.5	2
Doctors .....	0.9	3
Town Centre .....	0.6	2

## PLACES

Cotswold Wildlife Park & Gardens .....	5.2	12
Kilkenny Lane Country Park .....	2.4	7
Crocodiles of the World .....	2.3	6
Carterton Leisure Centre .....	1.3	4

## EDUCATION

Carterton Primary School .....	0.8	3
St. Joseph's Catholic Primary School .....	1	4
Carterton Community College .....	1.4	4
Bright Start Pre-School .....	0.6	2

## TRANSPORT LINKS (A40 & A417)

Oxford .....	18.7	
Cirencester .....	18.6	
Bicester .....	29.2	
Cheltenham .....	26.8	



# LOVE LOCAL

10



Community is at the heart of Carterton and nothing epitomises that spirit more than the independent businesses that line its streets.

Whether you're stopping by one of the local coffee shops, browsing handmade craftworks, enjoying a spot of lunch at Italian family restaurant All' Angelo or enjoying a drink at alternative bar The Siege of Orleans, there's plenty for everyone.

11





With a wide variety of stores making up a vibrant and eclectic retail experience, these are the people that have helped turn Carterton into what it is today.

A prime example of this community spirit is The Butty Box, an independent, family-run sandwich shop in Carterton that has served the local area for over 20 years.

After moving to Carterton in 1996 due to family being stationed at the nearby airbase, RAF Brize Norton, owner Charlotte and her family have built The Butty Box into an enduring icon for the town, feeding both locals and RAF

personnel alike. Described as ‘not your average sandwich shop’, The Butty Box offers a range of delicious sandwiches for their customers and operates a dog-friendly policy, providing a dedicated water station for furry visitors.

As a longtime resident of Carterton, Charlotte believes the town has a lot to offer, “Carterton is simply a happy place to live. There’s a real sense of community here and we all feel safe. It’s a great family place to bring up children too.

“The nightlife in Carterton can be a fun experience and the locals definitely keep us busy. We love running a business in the area.”

*“Carterton is simply  
a happy place to live.  
There’s a real sense  
of community here  
and we all feel safe”*

THE BUTTY BOX

# LIFE IN

Oxfordshire remains one of the most desirable areas for homebuyers that want a more relaxed lifestyle without giving up access to major cities.

The region is filled with areas of outstanding natural beauty, as well as cultural hotspots and world-class amenities, many of which are easily accessible for residents of The Falcons.

14 As one of the safest major regions in the country, Oxfordshire is also home to exceptional schools. 9 in 10 schools across the region are rated 'good' or 'outstanding' by Ofsted and the area has an exceptional heritage backed up by the University of Oxford.

For commuters that want access to major UK hotspots, The Falcons has excellent transport links around the country, with Birmingham and London accessible in just over an hour.

There's a reason that Oxfordshire usually ranks as one of the best places to live in the country and residents of The Falcons will be ideally placed to take advantage of these benefits.



# OXFORDSHIRE



# ABOUT THE FALCONS

Available as part of our Shared Ownership and Rent to Buy schemes, The Falcons is a fantastic opportunity to get on the property ladder via an affordable homes scheme.

For residents, The Falcons will offer a blend of relaxed country side living and modern town life, with links to larger cities ensuring you're always connected. For families, young professionals and couples that want to live in this incredibly popular part of the country, The Falcons represents a clear opportunity to get started.

16

Welcome to The Falcons - a modern development at the heart of an area imbued with heritage. With a range of new homes amidst beautiful green landscapes and modern amenities, it's not hard to imagine families or couples starting a new life here.

Seamlessly blending contemporary features with vibrant natural surroundings, The Falcons will utilise modern fixtures and fittings to ensure a world-class build quality for home buyers.

Built by United Living Homes, The Falcons will have a selection of 2, 3 and 4-bedroom homes offered on a Shared Ownership and Rent to Buy basis.

The development name is a nod to the historic parachute regiment based out of the nearby RAF airbase - Brize Norton - and reflects the heritage that can be found throughout the region.



17

**A DISTINCTIVE  
COLLECTION OF**

**2, 3 & 4  
BEDROOM  
HOMES**

**AVAILABLE WITH  
SHARED OWNERSHIP  
& RENT TO BUY**



18



19







22



23

# THE FALCONS

The Falcons is an exclusive collection of two, three and four bedroom homes offering new opportunities for first time buyers, downsizers and growing families.



## THE VOYAGER

4 Bedroom Home

## PLOTS

02, 51



## THE GLOBEMASTER

4 Bedroom Home

## PLOTS

49, 50, 62, 63, 64, 65, 66, 67, 68, 69, 72, 73, 74, 75, 76, 77



## THE ATLAS

4 Bedroom Home

## PLOTS

03, 70, 71, 78



## THE BRITANNIA

3 Bedroom Home

## PLOTS

22, 23, 24, 25, 26, 27



## THE ARGOSY

3 Bedroom Home

## PLOTS

08, 14, 15, 20, 21, 28, 29, 43, 44, 45, 46, 91, 92, 95, 96, 97, 98, 105, 106, 108, 112, 113, 119



## THE WHITLEY

2 Bedroom Home

## PLOTS

04, 05, 06, 07, 16, 17, 18, 19, 47, 48, 93, 94, 99, 100, 101, 102, 103, 104, 107, 109, 110, 111, 114, 115, 116, 117, 124, 125, 126, 127



## THE ALBERMARLE

3 Bedroom Home

## PLOTS

09, 118





26

– THE VOYAGER –  
4 BEDROOM DETACHED

SPECIFICATIONS

- Gas central heating
- Modern fitted kitchen
- Allocated parking
- 10 year build warranty
- Good transport links
- Local connection required
- Vinyl flooring through kitchen/ bathroom
- Turfed rear garden

GROUND FLOOR

- Lounge
- Kitchen
- Dining
- Study
- WC

FIRST FLOOR

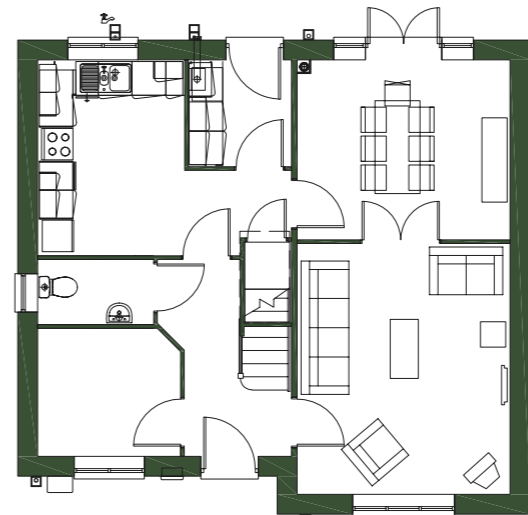
- Bedroom 1
- Bedroom 2
- Bedroom 3
- Bedroom 4
- Bathroom
- Ensuite

TOTAL AREA	SQM	SQFT
	123.5	1,329

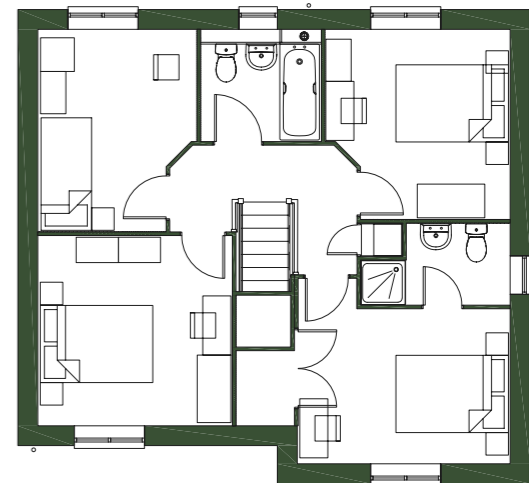


TYPICAL FLOORPLAN

GROUND FLOOR



FIRST FLOOR



27

Platform Home Ownership have taken every effort to ensure that these documents are accurate and represent the properties available. Platform Home Ownership and the developer may in their efforts to improve design reserve the right to alter site plans, floorplans, elevations and specifications without prior notice. Maps shown are not to scaled and for illustrative purposes only. Distances are taken from google.co.uk/maps. Information is correct at the time it was published - July 2024. For more information please visit the website at [www.platformhomeownership.com](http://www.platformhomeownership.com)



28

– THE GLOBEMASTER –

4 BEDROOM TERRACE &  
SEMI DETACHED

SPECIFICATIONS

- Gas central heating
- Modern fitted kitchen
- Allocated parking
- 10 year build warranty
- Good transport links
- Local connection required
- Vinyl flooring through kitchen/ bathroom
- Turfed rear garden

GROUND FLOOR

Lounge  
Kitchen/Dining  
WC

FIRST FLOOR

Bedroom 1  
Bedroom 2  
Bathroom

SECOND FLOOR

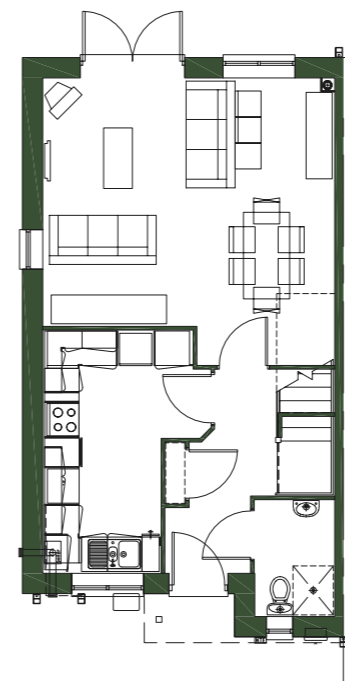
Bedroom 3  
Bedroom 4

TOTAL AREA	SQM	SQFT
	118	1,271

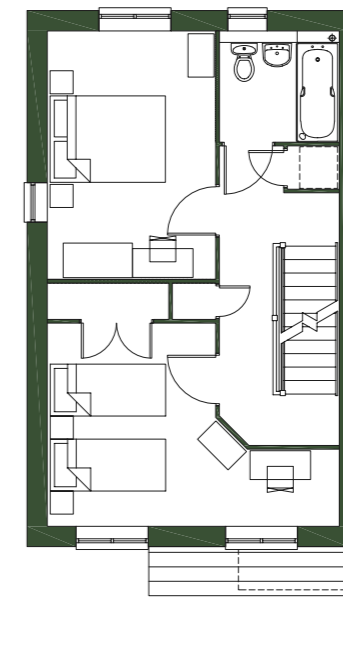


TYPICAL FLOORPLAN

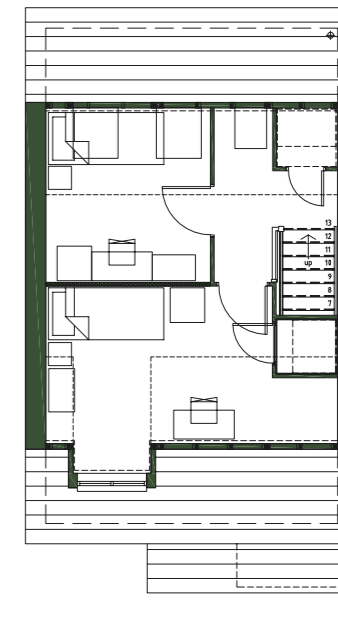
GROUND FLOOR



FIRST FLOOR



SECOND FLOOR



29

Platform Home Ownership have taken every effort to ensure that these documents are accurate and represent the properties available. Platform Home Ownership and the developer may in their efforts to improve design reserve the right to alter site plans, floorplans, elevations and specifications without prior notice. Maps shown are not to scaled and for illustrative purposes only. Distances are taken from google.co.uk/maps. Information is correct at the time it was published - July 2024. For more information please visit the website at [www.platformhomeownership.com](http://www.platformhomeownership.com)



30

– THE ATLAS –

4 BEDROOM  
SEMI DETACHED

SPECIFICATIONS

- Gas central heating
- Modern fitted kitchen
- Allocated parking
- 10 year build warranty
- Good transport links
- Local connection required
- Vinyl flooring through kitchen/ bathroom
- Turfed rear garden

GROUND FLOOR

- Lounge
- Kitchen/Dining
- WC

FIRST FLOOR

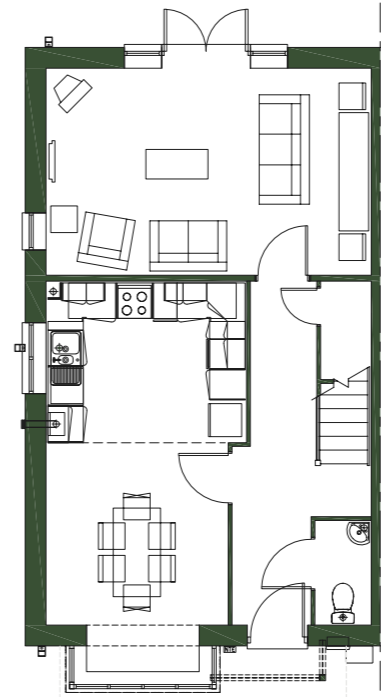
- Bedroom 1
- Bedroom 2
- Bedroom 3
- Bedroom 4
- Bathroom

TOTAL AREA	SQM	SQFT
	105.2	1,132

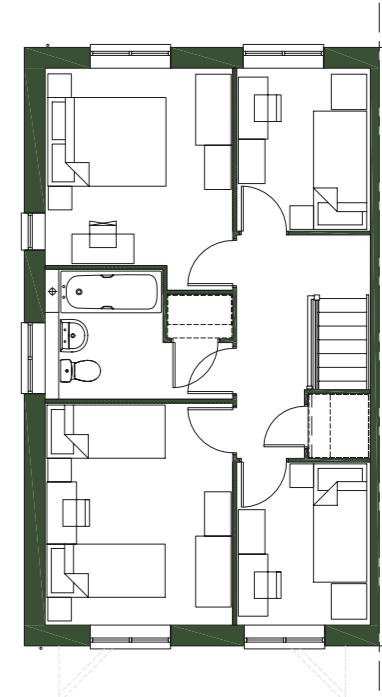


TYPICAL FLOORPLAN

GROUND FLOOR



FIRST FLOOR



31

Platform Home Ownership have taken every effort to ensure that these documents are accurate and represent the properties available. Platform Home Ownership and the developer may in their efforts to improve design reserve the right to alter site plans, floorplans, elevations and specifications without prior notice. Maps shown are not to scaled and for illustrative purposes only. Distances are taken from google.co.uk/maps. Information is correct at the time it was published - July 2024. For more information please visit the website at [www.platformhomeownership.com](http://www.platformhomeownership.com)





32

– THE BRITANNIA –

3 BEDROOM  
SEMI DETACHED

SPECIFICATIONS

- Gas central heating
- Modern fitted kitchen
- Allocated parking
- 10 year build warranty
- Good transport links
- Local connection required
- Vinyl flooring through kitchen/ bathroom
- Turfed rear garden

GROUND FLOOR

- Lounge/Dining
- Kitchen
- WC

FIRST FLOOR

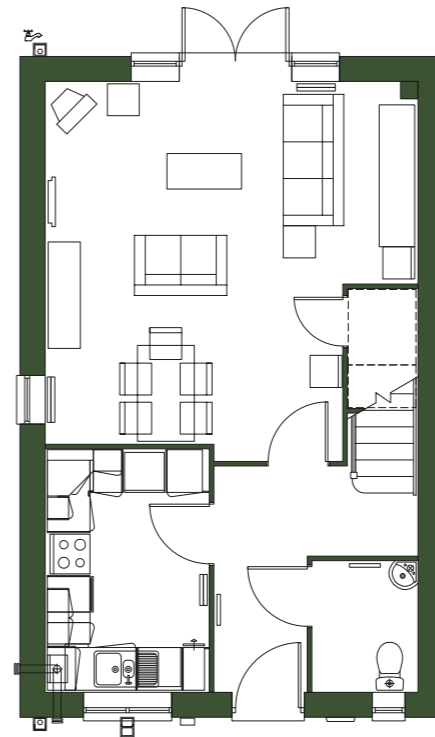
- Bedroom 1
- Bedroom 2
- Bedroom 3
- Bathroom

TOTAL AREA	SQM	SQFT
	90.3	972

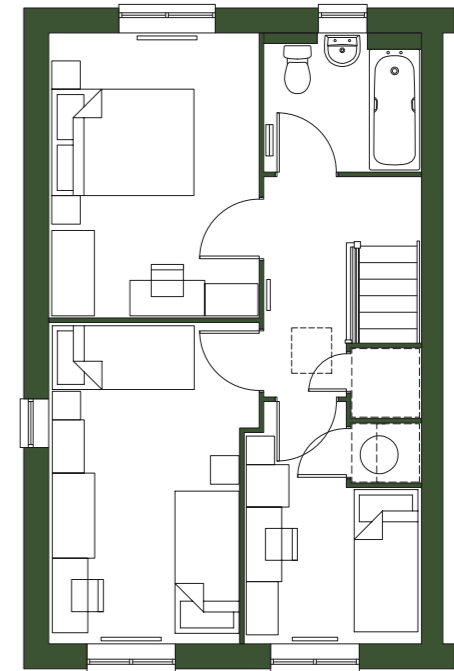


TYPICAL FLOORPLAN

GROUND FLOOR



FIRST FLOOR



33

Platform Home Ownership have taken every effort to ensure that these documents are accurate and represent the properties available. Platform Home Ownership and the developer may in their efforts to improve design reserve the right to alter site plans, floorplans, elevations and specifications without prior notice. Maps shown are not to scaled and for illustrative purposes only. Distances are taken from google.co.uk/maps. Information is correct at the time it was published - July 2024. For more information please visit the website at [www.platformhomeownership.com](http://www.platformhomeownership.com)



34

– THE ARGOSY –

3 BEDROOM  
SEMI DETACHED

SPECIFICATIONS

- Gas central heating
- Modern fitted kitchen
- Allocated parking
- 10 year build warranty
- Good transport links
- Local connection required
- Vinyl flooring through kitchen/ bathroom
- Turfed rear garden



GROUND FLOOR

Lounge  
Kitchen/Dining  
WC

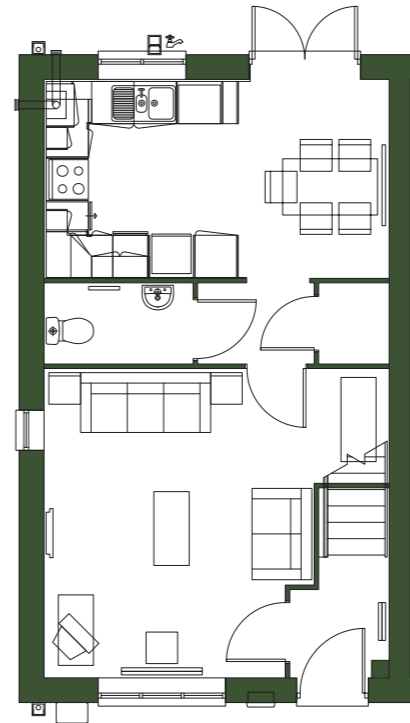
FIRST FLOOR

Bedroom 1  
Bedroom 2  
Bedroom 3  
Bathroom

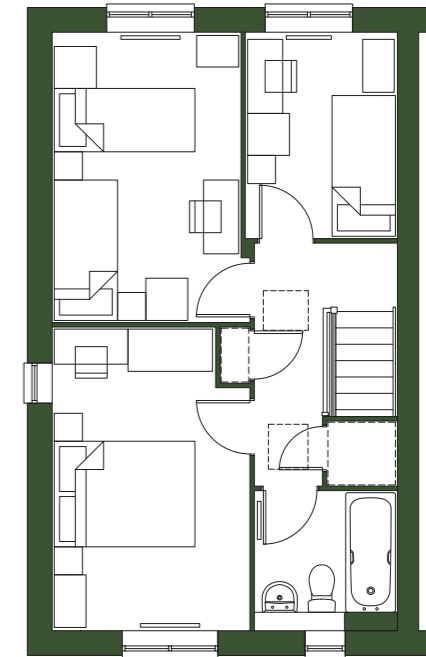
TOTAL AREA	SQM	SQFT
	83.7	901

TYPICAL FLOORPLAN

GROUND FLOOR



FIRST FLOOR



35

Platform Home Ownership have taken every effort to ensure that these documents are accurate and represent the properties available. Platform Home Ownership and the developer may in their efforts to improve design reserve the right to alter site plans, floorplans, elevations and specifications without prior notice. Maps shown are not to scaled and for illustrative purposes only. Distances are taken from google.co.uk/maps. Information is correct at the time it was published - July 2024. For more information please visit the website at [www.platformhomeownership.com](http://www.platformhomeownership.com)



36

– THE ARGOSY –

3 BEDROOM  
SEMI DETACHED

SPECIFICATIONS

- Gas central heating
- Modern fitted kitchen
- Allocated parking
- 10 year build warranty
- Good transport links
- Local connection required
- Vinyl flooring through kitchen/bathroom
- Turfed rear garden

GROUND FLOOR

- Lounge
- Kitchen/Dining
- WC

FIRST FLOOR

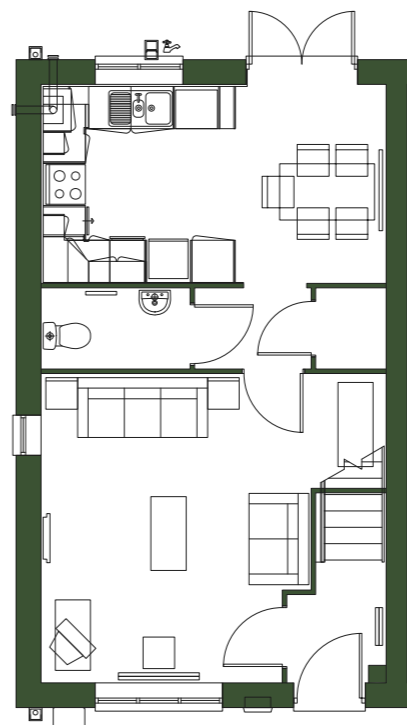
- Bedroom 1
- Bedroom 2
- Bedroom 3
- Bathroom

TOTAL AREA	SQM	SQFT
	83.7	901

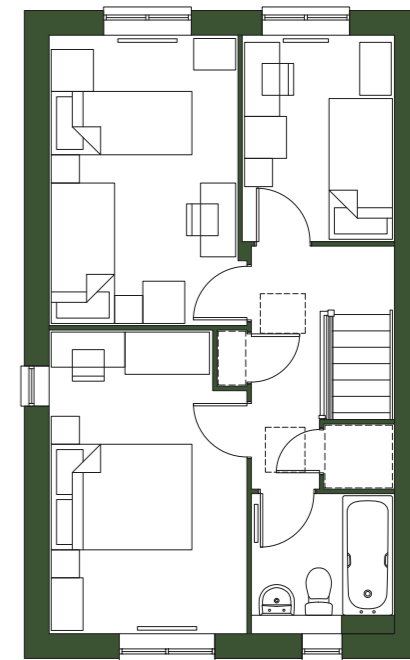


TYPICAL FLOORPLAN

GROUND FLOOR



FIRST FLOOR



37

Platform Home Ownership have taken every effort to ensure that these documents are accurate and represent the properties available. Platform Home Ownership and the developer may in their efforts to improve design reserve the right to alter site plans, floorplans, elevations and specifications without prior notice. Maps shown are not to scaled and for illustrative purposes only. Distances are taken from google.co.uk/maps. Information is correct at the time it was published - July 2024. For more information please visit the website at [www.platformhomeownership.com](http://www.platformhomeownership.com)



38

– THE WHITLEY –

2 BEDROOM  
SEMI DETACHED

SPECIFICATIONS

- Gas central heating
- Modern fitted kitchen
- Allocated parking
- 10 year build warranty
- Good transport links
- Local connection required
- Vinyl flooring through kitchen/ bathroom
- Turfed rear garden

GROUND FLOOR

- Lounge
- Kitchen/Dining
- WC

FIRST FLOOR

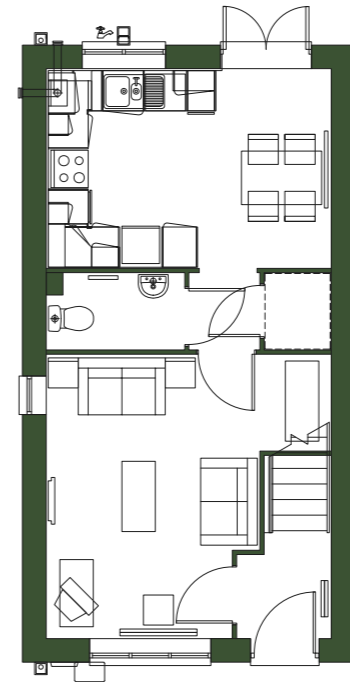
- Bedroom 1
- Bedroom 2
- Bathroom

TOTAL AREA	SQM	SQFT
	72.5	781

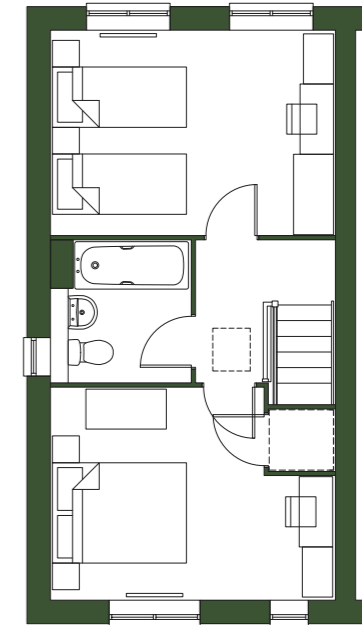


TYPICAL FLOORPLAN

GROUND FLOOR



FIRST FLOOR



39

Platform Home Ownership have taken every effort to ensure that these documents are accurate and represent the properties available. Platform Home Ownership and the developer may in their efforts to improve design reserve the right to alter site plans, floorplans, elevations and specifications without prior notice. Maps shown are not to scaled and for illustrative purposes only. Distances are taken from google.co.uk/maps. Information is correct at the time it was published - July 2024. For more information please visit the website at [www.platformhomeownership.com](http://www.platformhomeownership.com)



40

– THE WHITLEY –

2 BEDROOM  
SEMI DETACHED

SPECIFICATIONS

- Gas central heating
- Modern fitted kitchen
- Allocated parking
- 10 year build warranty
- Good transport links
- Local connection required
- Vinyl flooring through kitchen/ bathroom
- Turfed rear garden



GROUND FLOOR

Lounge  
Kitchen/Dining  
WC

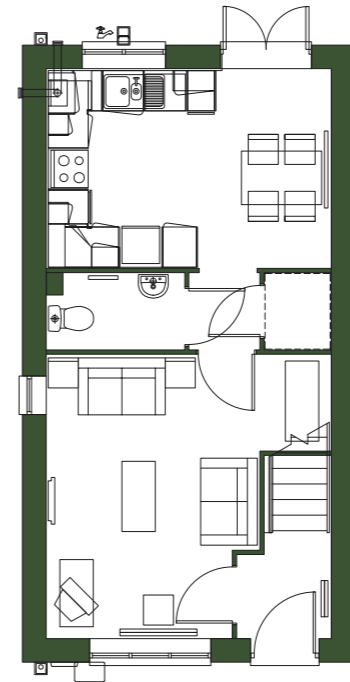
FIRST FLOOR

Bedroom 1  
Bedroom 2  
Bathroom

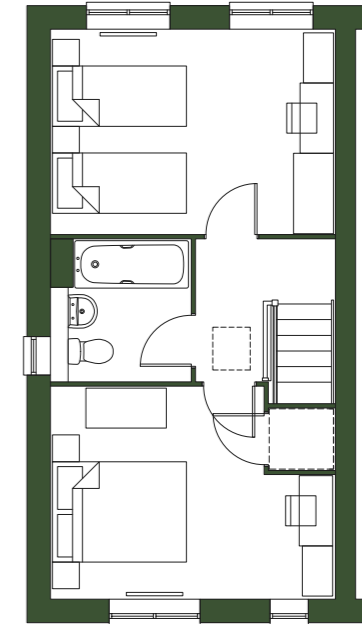
TOTAL AREA	SQM	SQFT
	72.5	781

TYPICAL FLOORPLAN

GROUND FLOOR



FIRST FLOOR



41

Platform Home Ownership have taken every effort to ensure that these documents are accurate and represent the properties available. Platform Home Ownership and the developer may in their efforts to improve design reserve the right to alter site plans, floorplans, elevations and specifications without prior notice. Maps shown are not to scaled and for illustrative purposes only. Distances are taken from google.co.uk/maps. Information is correct at the time it was published - July 2024. For more information please visit the website at [www.platformhomeownership.com](http://www.platformhomeownership.com)

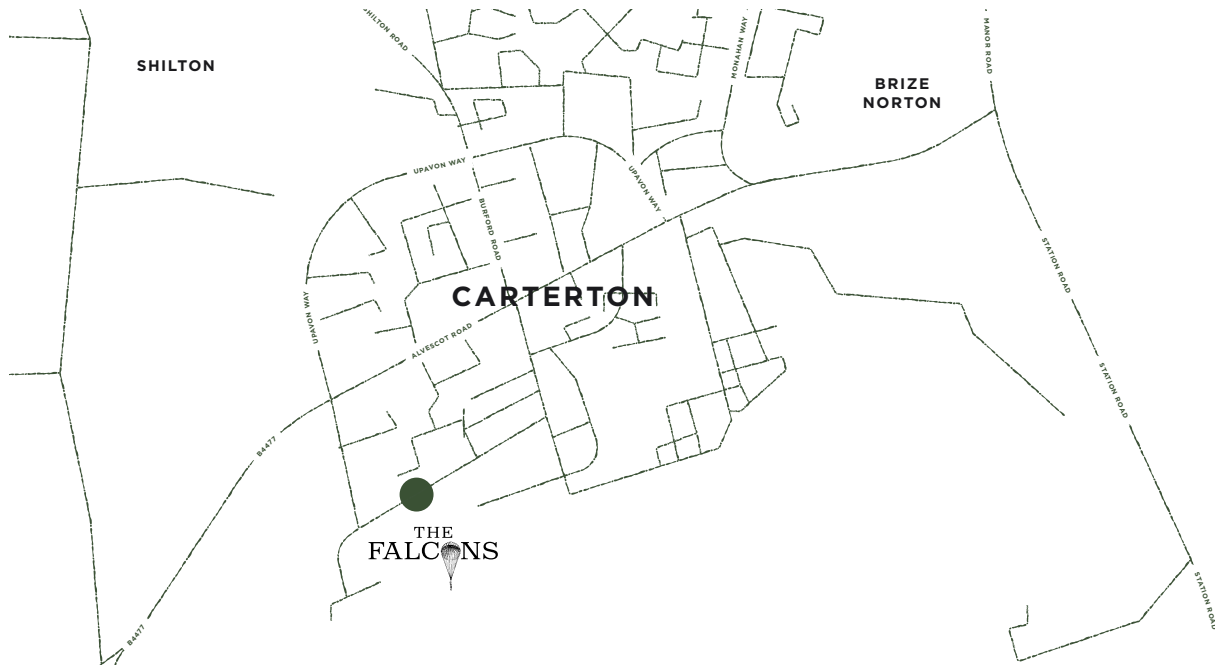








CARTERTON, OXFORDSHIRE, OX18 3RL



FOR MORE INFORMATION CONTACT

[SALES@PLATFORMHG.COM](mailto:SALES@PLATFORMHG.COM)  
[PLATFORMHOMEOWNERSHIP.COM](http://PLATFORMHOMEOWNERSHIP.COM)  
0333 200 7304



PLATFORMHOMEOWNERSHIP



PLATFORMHOMEOWNERSHIP



PLATFORMNEWHOME