



welcome to  
**Twigworth  
Green**

Twigworth • Gloucester



A modern development of  
3 bedroom new homes  
for shared ownership sale

welcome to your new home

# Twigworth Green, Twigworth

Gloucester GL2

3 Bed Semi-Detached Three-Storey | **The Beech Plots 118, 119, 122 & 123**

platform   
**home**  
OWNERSHIP



## Kitchen

Modern fitted kitchen with integral oven, hob and extract hood

Vinyl flooring

Space for Washing Machine and Fridge/Freezer

## Bathroom

White suite with shower over bath

En-suite shower room to bedroom 1

Complimentary wall tiling

Vinyl flooring

## General

Plenty of Local Amenities

Excellent M5 Commuter links

Local Schools

Easy access to Gloucester Quays Shopping Centre

Allocated Parking Spaces

10 Year Build Warranty

### PLEASE NOTE:

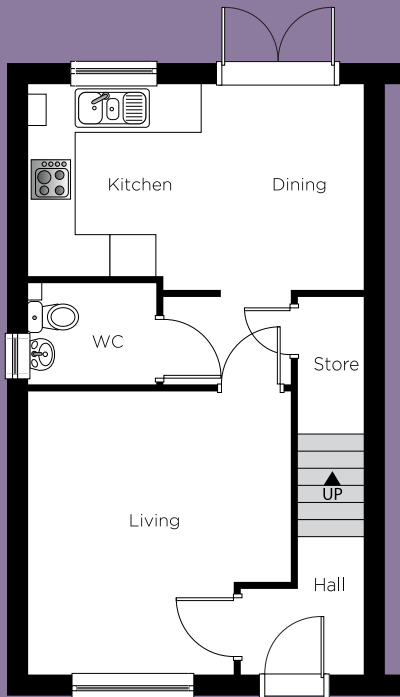
CGI shown is for Illustrations purposes only.

# Twigworth Green, Twigworth

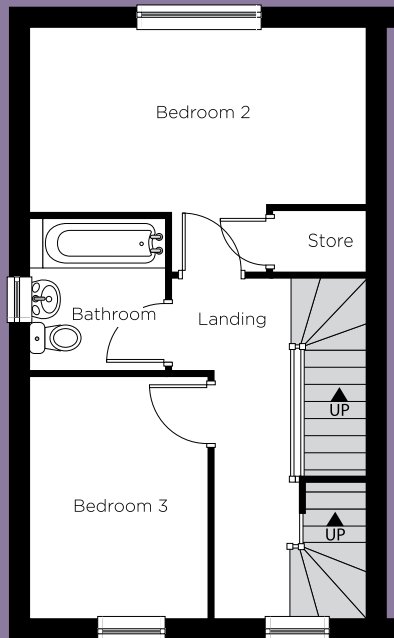
Gloucester GL2

3 Bed Semi-Detached Three-Storey | **The Beech Plots 118, 119, 122 & 123**

platform   
**home**  
OWNERSHIP



**Ground Floor**



**First Floor**



**Second Floor**

**Please note:**

Some plots will be the opposite floor layout to shown.

Kitchen layouts are indicative only. Please consult with Platform staff for specific plans, room dimensions and kitchen layouts. The information is for guidance only and is not to be relied on as statements or representations of fact and they do not make or give representation or warrant whatsoever and do not form part of any contract. All room measurements shown in metric first followed by imperial underneath.

**Ground Floor**

Kitchen/ Dining	4.79m 15' 9"	x	2.95m 9' 8"	(max)
Living	4.04m 13' 3"	x	3.76m 12' 4"	(max)

**First Floor**

Bed 2	4.79m 15' 9"	x	2.66m 8' 9"	(max)
Bed 3	3.43m 11' 3"	x	2.53m 8' 4"	(max)
Bathroom	2.18m 7' 2"	x	1.94m 6' 4"	(max)

**Second Floor**

Bed 1	4.79m 15' 9"	x	3.47m 11' 5"	(max)
En-suite	2.34m 7' 8"	x	1.67m 5' 6"	(max)
Dressing Room	2.39m 7' 10"	x	2.05m 6' 9"	(max)

**Total Floor Area:**

107.13m<sup>2</sup>/1153.12 sq.ft

welcome to your new home

# Twigworth Green, Twigworth

Gloucester GL2

3 Bed Semi-Detached | **The Elmslie Plots 296, 297 & 436**

platform   
**home**  
OWNERSHIP



## Kitchen

Modern fitted kitchen with integral oven, hob and extract hood

Vinyl flooring

Space for Washing Machine and Fridge/Freezer

## Bathroom

White suite with shower over bath

En-suite shower room to bedroom 1

Complimentary wall tiling

Vinyl flooring

## General

Plenty of Local Amenities

Excellent M5 Commuter links

Local Schools

Easy access to Gloucester Quays Shopping Centre

Allocated Parking Spaces

10 Year Build Warranty

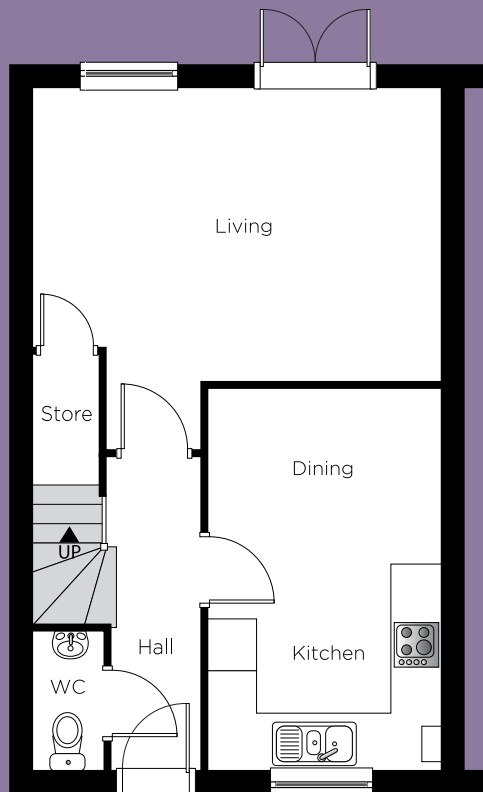
### PLEASE NOTE:

CGI shown is for Illustrations purposes only.

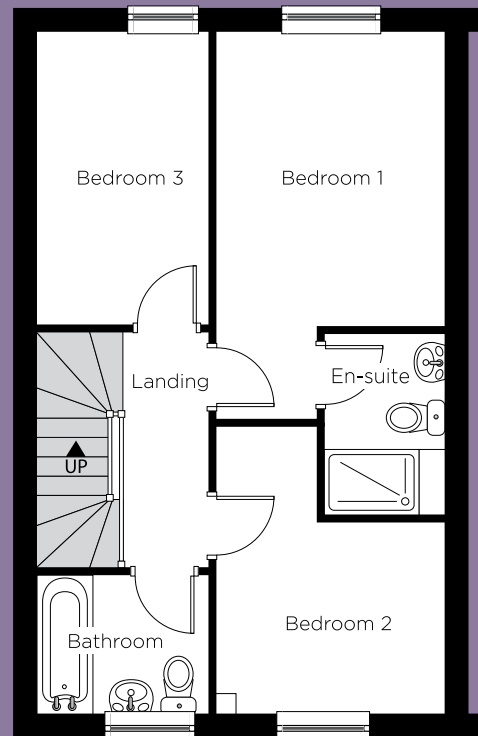
# Twigworth Green, Twigworth

Gloucester GL2

3 Bed Semi-Detached | The Elmslie Plots 296, 297 & 436



Ground Floor



First Floor

Some plots will be the opposite floor layout to shown.

## Ground Floor

Kitchen/ Dining	4.81m 15' 9"	x	2.95m 9' 8"	(max)
Living	5.15m 16' 11"	x	3.68m 12' 1"	(max)

## First Floor

Bed 1	3.70m 12' 2"	x	2.89m 9' 6"	(max)
En-suite	2.31m 7' 7"	x	1.51m 4' 11"	(max)
Bed 2	2.89m 9' 6"	x	2.42m 7' 11"	(max)
Bed 3	3.68m 12' 1"	x	2.19m 7' 2"	(max)
Bathroom	2.19m 7' 2"	x	1.75m 5' 9"	(max)

**Total Floor Area:**  
88.12m<sup>2</sup>/948.55 sq.ft

Kitchen layouts are indicative only. Please consult with Platform staff for specific plans, room dimensions and kitchen layouts. The information is for guidance only and is not to be relied on as statements or representations of fact and they do not make or give representation or warrant whatsoever and do not form part of any contract. All room measurements shown in metric first followed by imperial underneath.


# Twigworth Green, Twigworth


Gloucester GL2

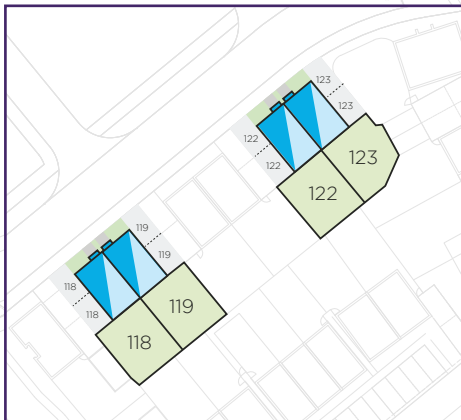
Site plan



## Development

 **The Beech**  
3 Bed Semi-Detached  
Three-Storey  
Plots 118, 119, 122 & 123

 **The Elmslie**  
3 Bed Semi-Detached  
Plots 296, 297 & 436



For further details please contact our sales team on: **0333 200 7304** or email: [sales@platformhg.com](mailto:sales@platformhg.com)

**Contact Us:**  [www.platformhomeownership.com](http://www.platformhomeownership.com) |  [facebook.com/PlatformHomeOwnership](https://facebook.com/PlatformHomeOwnership)  
 [twitter.com/PlatformNewHome](https://twitter.com/PlatformNewHome) |  [instagram.com/platformhomeownership](https://instagram.com/platformhomeownership)

Part of the **platform**  
 housing group

# Twigworth Green, Twigworth

Gloucester GL2

House prices for all plots available



## Houses available

Plot	House Type	Postal Address	Handover	100% Price	40% Share Value	Monthly Rent	Service Charge
118	<b>The Beech</b> 3 Bed Semi-Detached - Three-Storey	13 Carrington Road, Gloucester, Gloucestershire GL2 9GR.	Dec 2023	£327,500	£131,000	£450.31	TBC
119	<b>The Beech</b> 3 Bed Semi-Detached - Three-Storey	11 Carrington Road, Gloucester, Gloucestershire GL2 9GR.	Dec 2023	£327,500	£131,000	£450.31	TBC
122	<b>The Beech</b> 3 Bed Semi-Detached - Three-Storey	5 Carrington Road, Gloucester, Gloucestershire GL2 9GR.	Dec 2023	£327,500	£131,000	£450.31	TBC
123	<b>The Beech</b> 3 Bed Semi-Detached - Three-Storey	3 Carrington Road, Gloucester, Gloucestershire GL2 9GR.	Dec 2023	£327,500	£131,000	£450.31	TBC
296	<b>The Elmslie</b> 3 Bed Semi-Detached	7 Weaver Crescent, Gloucester, Gloucestershire GL2 9SH.	Jan 2024	£327,500	£131,000	£450.31	TBC
297	<b>The Elmslie</b> 3 Bed Semi-Detached	5 Weaver Crescent, Gloucester, Gloucestershire GL2 9SH.	Jan 2024	£327,500	£131,000	£450.31	TBC
436	<b>The Elmslie</b> 3 Bed Semi-Detached	2 Weaver Crescent, Gloucester, Gloucestershire GL2 9SH.	Jan 2024	£327,500	£131,000	£450.31	TBC

For further details please contact our sales team on: **0333 200 7304** or email: [sales@platformhg.com](mailto:sales@platformhg.com)

**Contact Us:**  [www.platformhomeownership.com](http://www.platformhomeownership.com) |  [facebook.com/PlatformHomeOwnership](https://facebook.com/PlatformHomeOwnership)  
 [twitter.com/PlatformNewHome](https://twitter.com/PlatformNewHome) |  [instagram.com/platformhomeownership](https://instagram.com/platformhomeownership)

For details contact our sales team  
on **0333 200 7304**  
or email: **sales@platformhg.com**

**Contact Us:**



[www.platformhomeownership.com](http://www.platformhomeownership.com)



[facebook.com/PlatformHomeOwnership](https://facebook.com/PlatformHomeOwnership)



[twitter.com/PlatformNewHome](https://twitter.com/PlatformNewHome)



[instagram.com/platformhomeownership](https://instagram.com/platformhomeownership)

Scheme administered by Platform Housing Group  
1700 Solihull Parkway, Birmingham Business Park, Solihull, B37 7YD.

Part of the **platform**  
housing group