

# THE GROVE

OAK VIEW WAY,  
WORCESTER, WR2 5FF

platform   
**home**  
OWNERSHIP

A COLLECTION OF 2 & 3 BEDROOM HOMES

Welcome to  
**The Grove**,  
situated in  
the city of  
**Worcester.**

2



3



4

5

The Grove, Worcester is **well connected** making it a home buyers **dream.**

### Introducing The Grove, Worcester

Perfectly located near Worcester city centre, The Grove offers the perfect mix of bustling city lift and traditional architecture. Worcester offers great transport links with easy access to the M5 motorway, connecting you to Birmingham and further afield.

Homes at The Grove, are available to purchase through Shared Ownership

**20**  
MINS

Malvern

**23**  
MINS

Kidderminster

**50**  
MINS

Hereford

**50**  
MINS

Birmingham

[Read More >](#)

# Buy your new home through Shared Ownership

# 2 & 3

Bedroom Family Homes Available

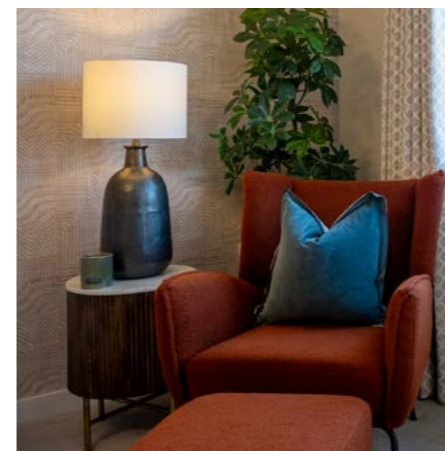
Whatever your reasons for moving home, The Grove offers the perfect mix of properties to suit all needs.

Buying through Shared Ownership at this development means you can purchase between 25 - 75% of your property, and pay a subsidised rent on the remaining share you don't own.



**DID YOU KNOW**

Shared Ownership offers great flexibility, and you can purchase more of your home through Staircasing whenever you are ready.





**THE LAWRENCE**  
3 Bedroom Home

**PLOTS:**  
217



**THE DRAKE**  
2 Bedroom Home

**PLOTS:**  
213, 214, 215, 218, 219, 225, 226, 231, 232, 233



**THE ELYOT**  
2 Bedroom Home

**PLOTS:**  
229, 230





12

– THE LAWRENCE –

3 BEDROOM

£343,000

SPECIFICATIONS

- 10 year build warranty
- Allocated parking
- Double glazed windows
- Downstairs W/C
- Family bathroom with shower over bath
- Gas central heating
- Modern fitted kitchen
- Turfed rear garden
- Allocated parking

GROUND FLOOR

Kitchen / Dining 10'6" x 16'3"

Lounge 10'8" x 16'3"

FIRST FLOOR

Bedroom 1 10'6" x 11'5"

Bedroom 2 10'9" x 8'0"

Bedroom 3 10'10" x 7'11"

TOTAL FLOOR AREA

940 SQ FT

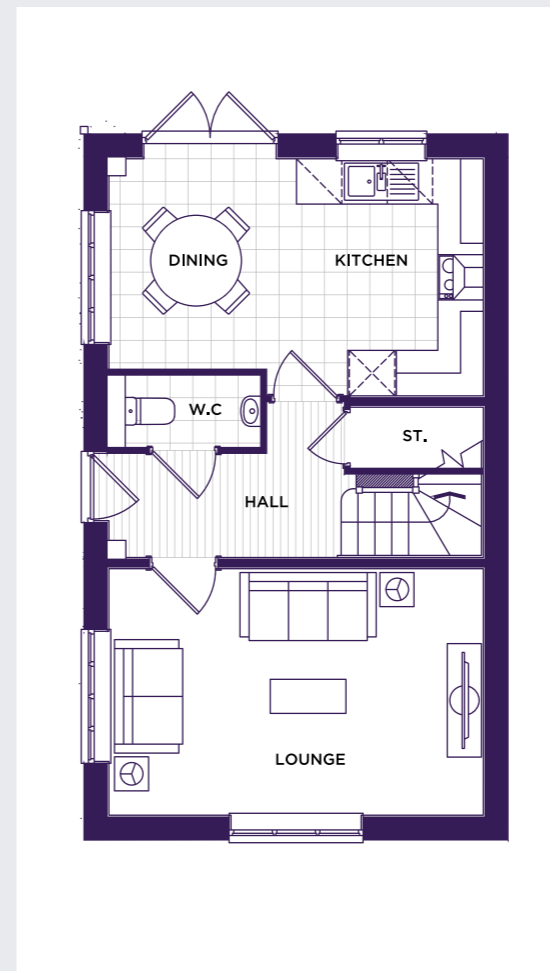
BLOOR HOMES

[Read more about the developer](#)

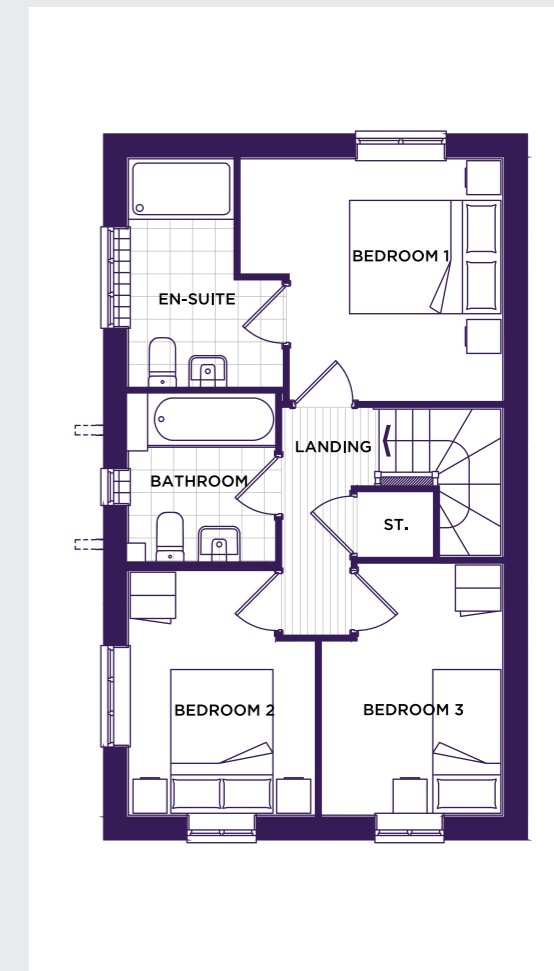


TYPICAL FLOORPLAN

GROUND FLOOR



FIRST FLOOR



13

Imagery indicative of Platform show homes.

Platform Home Ownership have taken every effort to ensure that these documents are accurate and represent the properties available. Platform Home Ownership and the developer may in their efforts to improve design reserve the right to alter site plans, floorplans, elevations and specifications without prior notice. Maps shown are not to scaled and for illustrative purposes only. Distances are taken from google.co.uk/maps. Information is correct at the time it was published - November 2023. For more information please visit our website at [www.platformhomeownership.com](http://www.platformhomeownership.com)



14

**- THE DRAKE -**  
**2 BEDROOM**  
 PLOTS: 213-226  
**FROM £252,000**

**SPECIFICATIONS**

- 10 year build warranty
- Allocated parking
- Double glazed windows
- Downstairs W/C
- Family bathroom with shower over bath
- Gas central heating
- Modern fitted kitchen
- Turfed rear garden
- Allocated parking

**GROUND FLOOR**

Kitchen / Dining	10'2" x 9'10"
Lounge	10'3" x 13'8"
Utility	3'5" x 5'7"

**FIRST FLOOR**

Bedroom 1	13'10" x 9'4"
Bedroom 2	13'10" x 8'2"

**TOTAL FLOOR AREA**

670 SQ FT

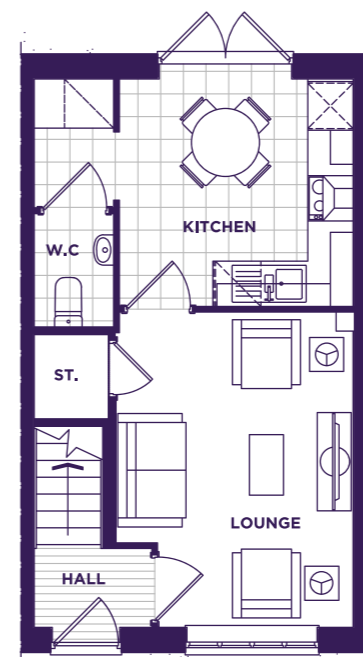
**BLOOR HOMES**

[Read more about the developer](#)

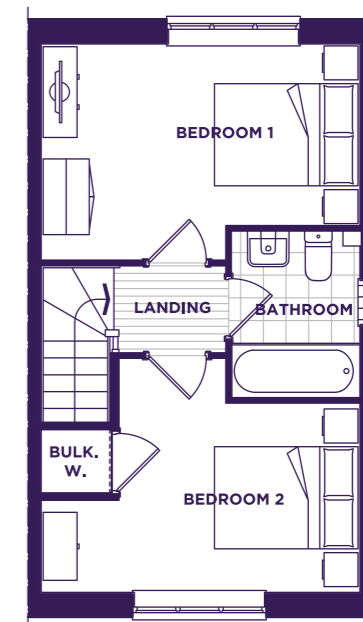


**TYPICAL FLOORPLAN**

**GROUND FLOOR**



**FIRST FLOOR**



15

Imagery indicative of Platform show homes.

Platform Home Ownership have taken every effort to ensure that these documents are accurate and represent the properties available. Platform Home Ownership and the developer may in their efforts to improve design reserve the right to alter site plans, floorplans, elevations and specifications without prior notice. Maps shown are not to scaled and for illustrative purposes only. Distances are taken from google.co.uk/maps. Information is correct at the time it was published - November 2023. For more information please visit our website at [www.platformhomeownership.com](http://www.platformhomeownership.com)





16

– THE DRAKE –  
 2 BEDROOM  
 PLOTS: 231-233  
**FROM £252,000**

**SPECIFICATIONS**

- 10 year build warranty
- Allocated parking
- Double glazed windows
- Downstairs W/C
- Family bathroom with shower over bath
- Gas central heating
- Modern fitted kitchen
- Turfed rear garden
- Allocated parking

**GROUND FLOOR**

Kitchen / Dining	10'2" x 9'10"
Lounge	10'3" x 13'8"
Utility	3'5" x 5'7"

**FIRST FLOOR**

Bedroom 1	13'10" x 9'4"
Bedroom 2	13'10" x 8'2"

**TOTAL FLOOR AREA**

670 SQ FT

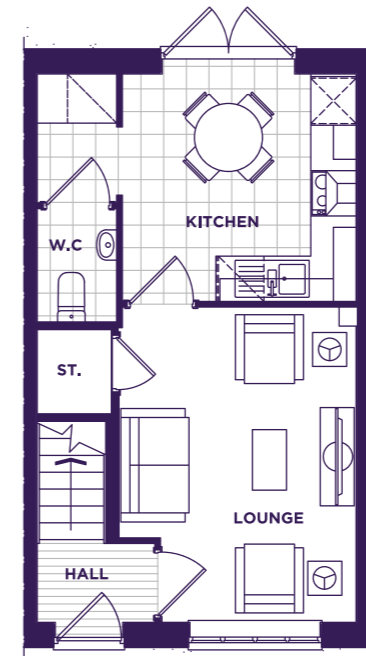
**BLOOR HOMES**

[Read more about the developer](#)

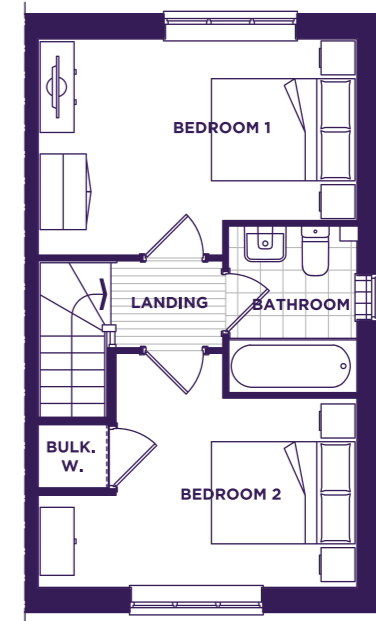


**TYPICAL FLOORPLAN**

**GROUND FLOOR**



**FIRST FLOOR**



17

Imagery indicative of Platform show homes.

Platform Home Ownership have taken every effort to ensure that these documents are accurate and represent the properties available. Platform Home Ownership and the developer may in their efforts to improve design reserve the right to alter site plans, floorplans, elevations and specifications without prior notice. Maps shown are not to scaled and for illustrative purposes only. Distances are taken from google.co.uk/maps. Information is correct at the time it was published - November 2023. For more information please visit our website at [www.platformhomeownership.com](http://www.platformhomeownership.com)



18

- THE ELYOT -  
2 BEDROOM

£245,000

SPECIFICATIONS

- 10 year build warranty
- Allocated parking
- Double glazed windows
- Downstairs W/C
- Family bathroom with shower over bath
- Gas central heating
- Modern fitted kitchen
- Turfed rear garden
- Allocated parking

GROUND FLOOR

Kitchen / Dining	9'4" x 10'9"
Lounge	13'0" x 12'10"
Utility	3'5" x 5'7"

FIRST FLOOR

Bedroom 1	13'0" x 8'9"
Bedroom 2	13'0" x 7'10"

TOTAL FLOOR AREA

632 SQ FT

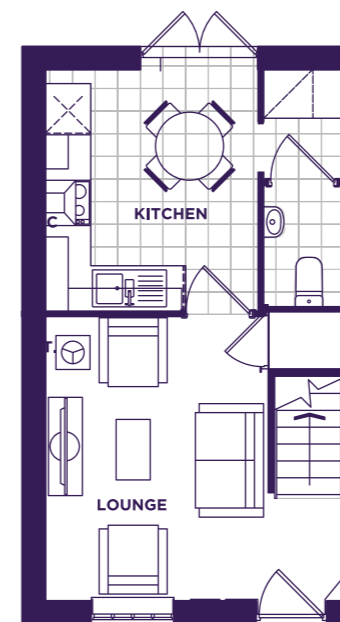
BLOOR HOMES

[Read more about the developer](#)

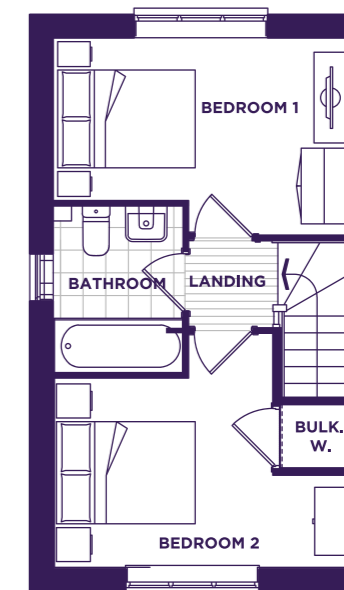


TYPICAL FLOORPLAN

GROUND FLOOR



FIRST FLOOR



19

Imagery indicative of Platform show homes.

Platform Home Ownership have taken every effort to ensure that these documents are accurate and represent the properties available. Platform Home Ownership and the developer may in their efforts to improve design reserve the right to alter site plans, floorplans, elevations and specifications without prior notice. Maps shown are not to scaled and for illustrative purposes only. Distances are taken from google.co.uk/maps. Information is correct at the time it was published - November 2023. For more information please visit our website at [www.platformhomeownership.com](http://www.platformhomeownership.com)



FOR MORE INFORMATION CONTACT

SALES@PLATFORMHG.COM  
PLATFORMHOMEOWNERSHIP.COM  
0333 200 7304



PLATFORMHOMEOWNERSHIP



PLATFORMHOMEOWNERSHIP



PLATFORMNEWHOME

THE GROVE, OAK VIEW WAY,  
WORCESTER, WR2 5FF

