



Edith Grove, Chelsea, SW10

£550 per week

| | |
|---------------|-------------------------------|
| Bedrooms | 1 |
| Bathrooms | 1 |
| Furnished | Furnished |
| Availability | 2nd March 2026 |
| Outdoor Space | None |
| Parking | Residents Permit |
| Council Tax | Council Tax Band: C (RBKC) |

BRIGHT AND SPACIOUS ONE BEDROOM FLAT

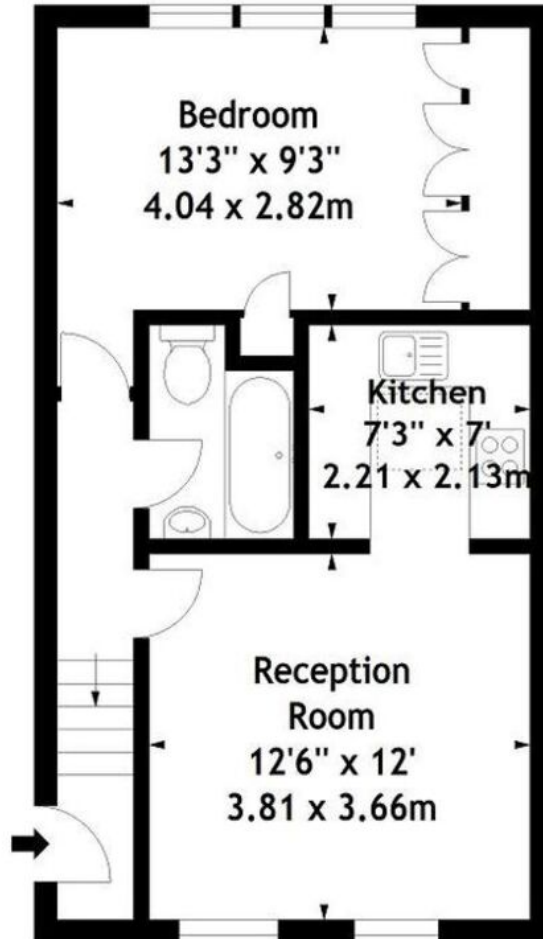
A bright and spacious top floor (3rd floor, walk up) flat with a good sized reception room and dining area. The flat offers plenty of daylight and good storage space. It has also been recently refurbished including a brand new boiler and new fitted carpets. Conveniently positioned near all the shops, restaurants and transport links of both the Fulham Road and the Kings Road. The flat comes fully furnished.

Features

Entrance Hall, Reception Room, Kitchen, Double Bedroom, Bathroom.



Edith Grove, SW10
Approx. Gross Internal Area
453 Sq Ft - 42.08 Sq M



Third Floor

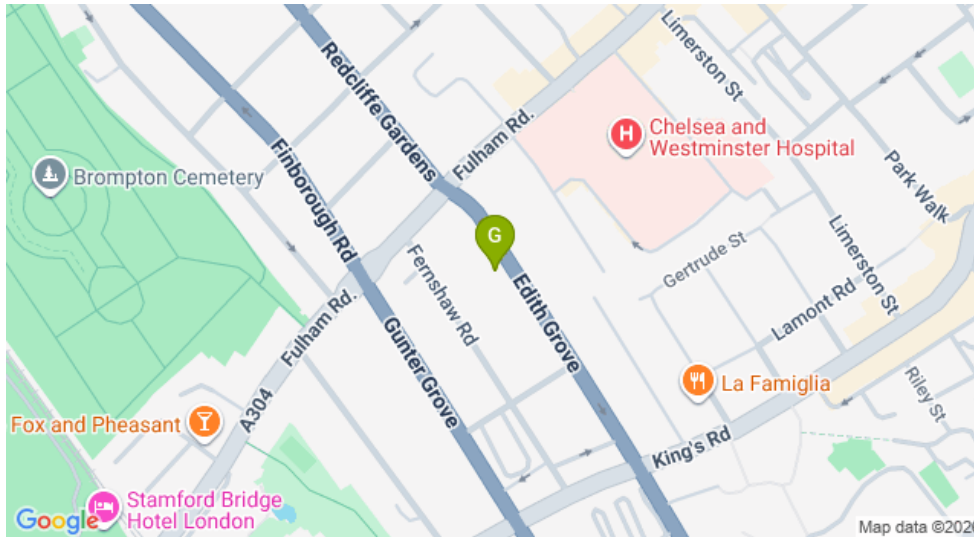
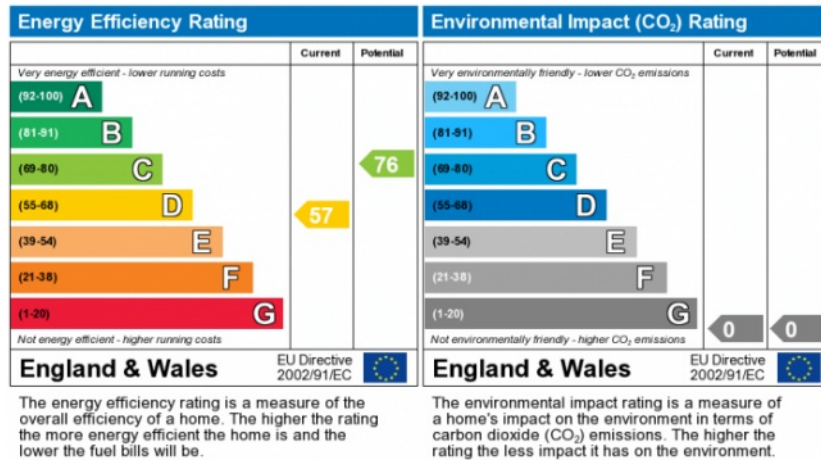
Measured in accordance with RICS guidelines. Every attempt is made to ensure accuracy, however all measurements are approximate.

This floor plan is for illustrative purposes only and is not to scale.

© Datography Ltd 2013

Photographs * Floorplans * Virtual Tours

Tel: 0845 643 4401 www.datography.com



INFORMATION FOR TENANTS

After an offer is accepted by the Landlord, which is subject to contract and acceptable references, the first rent and a deposit are payable in advance. Any rent advertised is pure rent.

IMPORTANT NOTICE

Susan Metcalfe Residential, their clients and any joint agents give notice that: 1: They are not authorised to make or give any representations or warranties in relation to the property either here or elsewhere, either on their own behalf or on behalf of their client or otherwise. They assume no responsibility for any statement that may be made in these particulars. These particulars do not form part of any offer or contract and must not be relied upon as statements or representations of fact. 2: Any areas, measurements or distances are approximate. The text, photographs and plans are for guidance only and are not necessarily comprehensive. It should not be assumed that the property has all necessary planning, building regulation or other consents and Susan Metcalfe Residential have not tested any services, equipment or facilities.