



53A John Street, Brimington, Chesterfield, S43 1ER

Offers In The Region Of £185,000

- Deceptively spacious 3 bedroom home
- Kitchen diner
- 2 Good sized further bedrooms
- Off street parking
- Large lounge with door out onto an enclosed rear garden
- Family bathroom and downstairs wc
- Ideal starter home
- Master bedroom with ensuite shower room
- Well maintained throughout



John Street, S43

DETAILS
Total area: 778.41 sq ft



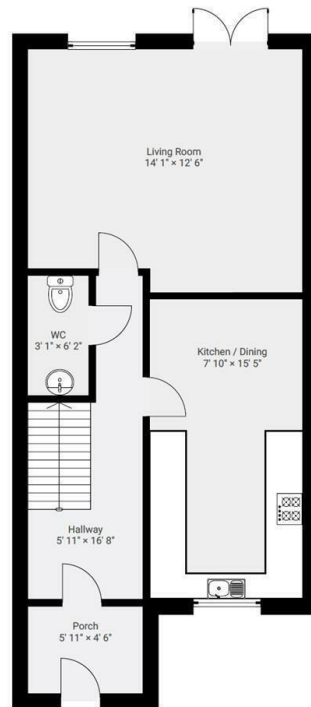
Square Box Media
info@squareboxmedia.com
www.squareboxmedia.com

This floorplan is provided without any warranty.
The actual size of dimensions may vary and this
floorplan is intended for illustrative purposes
only.

0' 2' 4' 6' 1:63

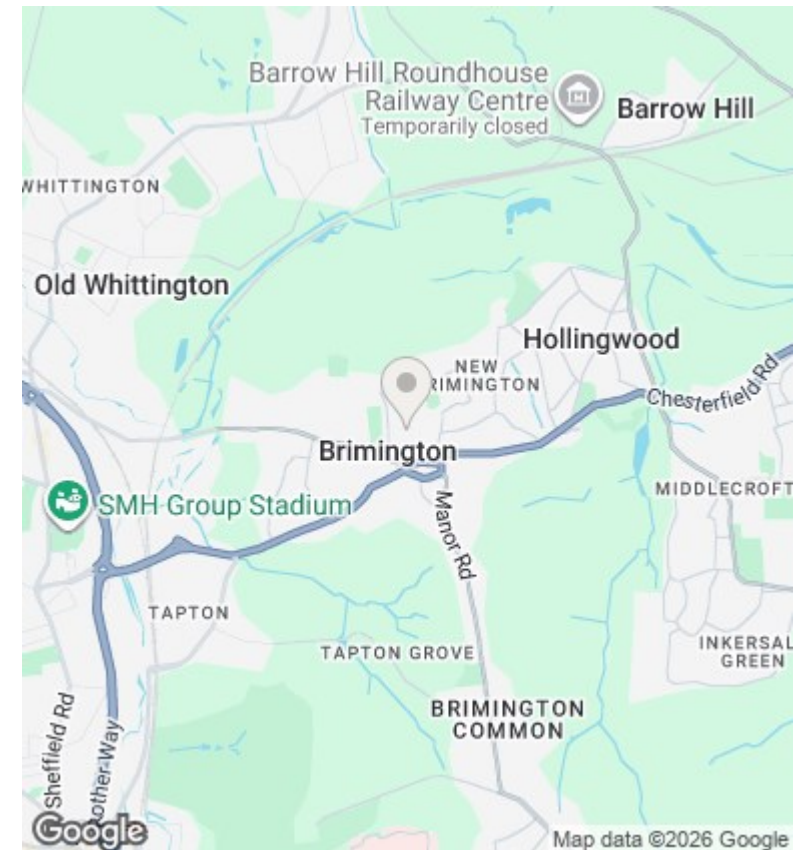
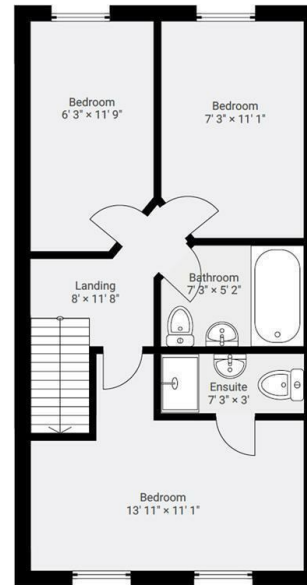
▼ Ground Floor

TOTAL AREA: 410.13 sq ft



▼ 1st Floor

TOTAL AREA: 368.28 sq ft



Directions

Viewings

Viewings by arrangement only. Call 01246 276 276 to make an appointment.

Council Tax Band

EPC Rating:

| Energy Efficiency Rating | | |
|---|-------------------------|-----------|
| | Current | Potential |
| Very energy efficient - lower running costs | | |
| (92-plus) A | | |
| (81-91) B | | |
| (69-80) C | | |
| (55-68) D | | |
| (39-54) E | | |
| (21-38) F | | |
| (1-20) G | | |
| Not energy efficient - higher running costs | | |
| England & Wales | EU Directive 2002/91/EC | |