



6 Boythorpe Mount, Boythorpe, Chesterfield, S40 2QD

Offers In The Region Of £230,000

- 3 Bedroom semi detached
- Main bathroom with bath and white suite, Wc downstairs
- Utility room
- Off street parking for 2 vehicles
- Enclosed rear back garden with storage shed
- Conservatory with views over the garden
- Shower room with potential to make into a ensuite
- Kitchen diner with breakfast bar
- Attic bedroom with lovely views



6 Boythorpe Mount

CREATED ON
2025-11-06

LOCATION
6 Boythorpe Mount,
S40 2QD Chesterfield
England
GB

DETAILS
Total area: 1177.50 sq ft
Living area: 1110.83 sq ft
Floors: 3
Rooms: 13

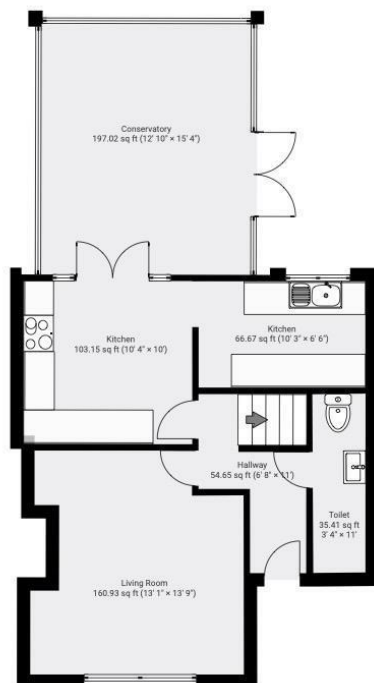
Square Box Media
info@squareboxmedia.com
www.squareboxmedia.com

THIS FLOORPLAN IS PROVIDED WITHOUT
WARRANTY OF ANY KIND. SQUAREBOX
DISCLAIMS ANY WARRANTY INCLUDING,
WITHOUT LIMITATION, SATISFACTORY QUALITY
OR ACCURACY OF DIMENSIONS.

0' 2' 4' 6' 8' 1.75

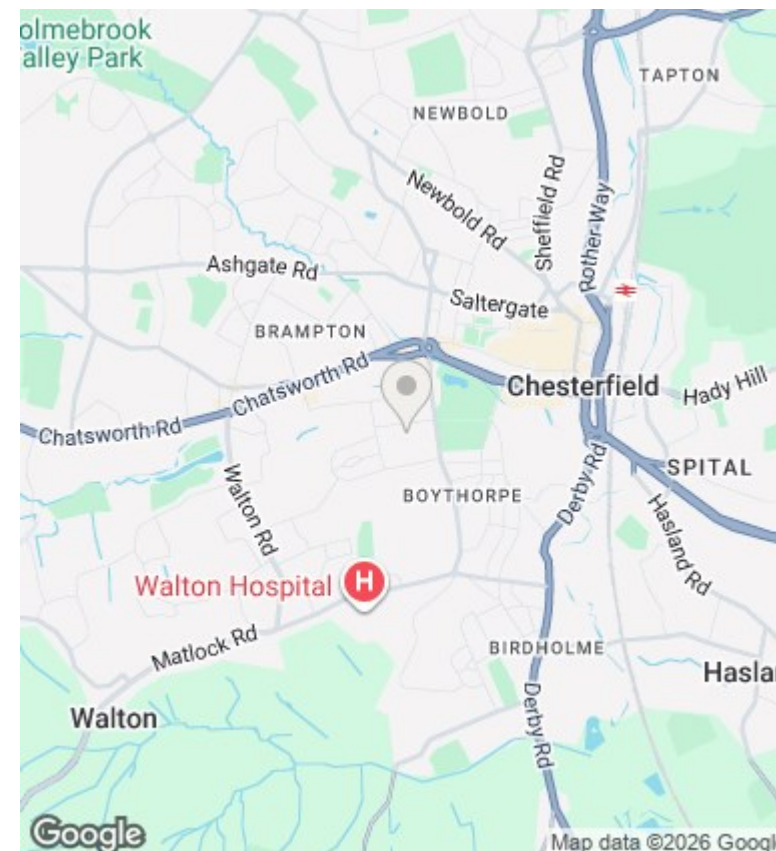
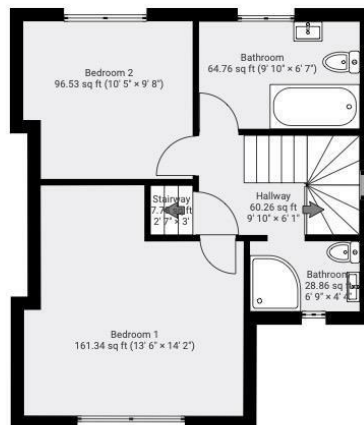
▼ Ground Floor

TOTAL AREA: 617.47 sq ft · LIVING AREA:
550.79 sq ft · ROOMS: 6



▼ 1st Floor

TOTAL AREA: 419.12 sq ft · LIVING AREA: 419.12 sq ft ·
ROOMS: 6



Directions

Viewings

Viewings by arrangement only. Call 01246 276 276
to make an appointment.

Council Tax Band

EPC Rating:

| Energy Efficiency Rating | | |
|---|----------------------------|-----------|
| | Current | Potential |
| Very energy efficient - lower running costs | | |
| (92 plus) A | | |
| (81-91) B | | |
| (69-80) C | | |
| (55-68) D | | |
| (39-54) E | | |
| (21-38) F | | |
| (1-20) G | | |
| Not energy efficient - higher running costs | | |
| England & Wales | EU Directive 2002/91/EC | |