



43 Nethermoor Road, New Tupton, Chesterfield, S42 6EJ

Offers In The Region Of £290,000

- 3 Bedroom detached house
- Downstairs shower room, wc and utility room
- Modern bathroom with shower over the bath
- Chain free
- Ideally located within Tupton - good for local schooling
- kitchen diner with breakfast bar
- Generous plot with multiple seating areas
- Extended property with a family room
- Family lounge with log burner
- Off street parking and garage



Nethermoor Road, S42

DETAILS
Total area: 906.15 sq ft



Square Box Media
info@squareboxmedia.com
www.squareboxmedia.com

This floorplan is provided without any warranty.
The actual size of dimensions may vary and this
floorplan is intended for illustrative purposes
only.

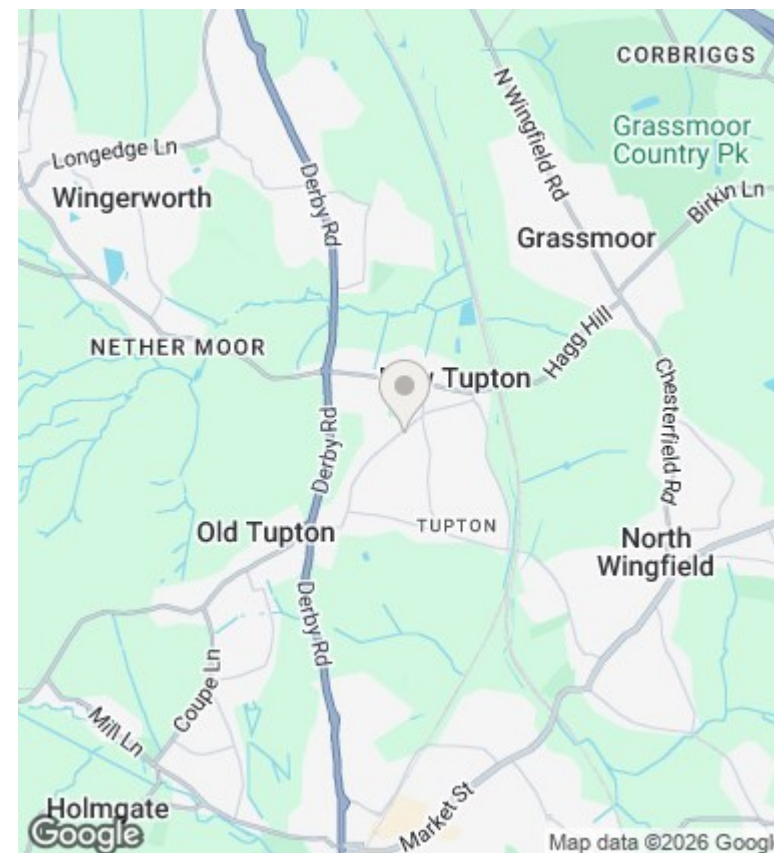
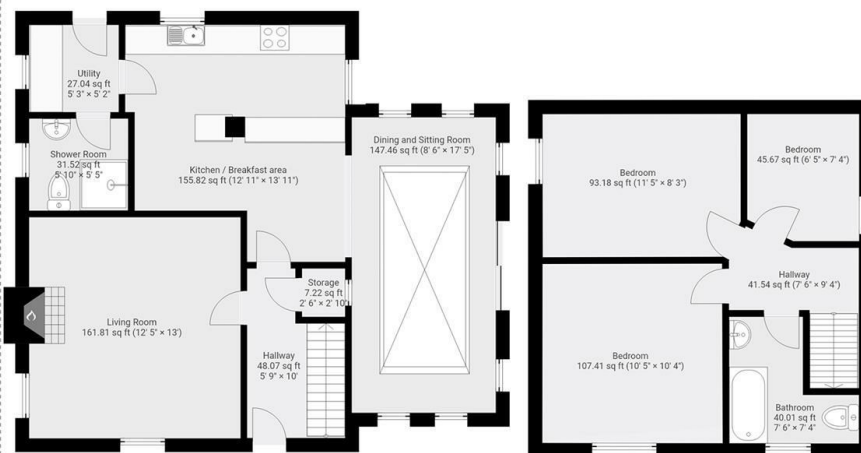
0' 2' 4' 6' 8' 10' 1.85

▼ Ground Floor

TOTAL AREA: 578.54 sq ft

▼ 1st Floor

TOTAL AREA: 327.61 sq ft



Directions

Viewings

Viewings by arrangement only. Call 01246 276 276 to make an appointment.

Council Tax Band

C

EPC Rating:

E

Energy Efficiency Rating

	Current	Potential
Very energy efficient - lower running costs		
(92-plus) A		
(81-91) B		
(69-80) C		
(55-68) D		
(39-54) E		
(21-38) F		
(1-20) G		
Not energy efficient - higher running costs		
	52	71

England & Wales

EU Directive
2002/91/EC

