



## 8 Ripple Walk, Brimington, Chesterfield, S41 0UN

Guide Price £375,000

- Generous plot with off street parking for multiple vehicles
- Modern property with kitchen diner
- 4 Double bedrooms with a Master bedroom with ensuite shower room
- Guide price £375,000 - £385,000
- Utility room and downstairs wc
- Still under NHBC warrantee
- Well presented and maintained throughout
- Enclosed rear garden area with patio seating and lawn
- Large garage with potential for partial or full conversion into a gym/playroom/home office etc
- Ideal family home with good transport links



Ripple Walk, S41

DETAILS  
Total area: 1306.78 sq ft

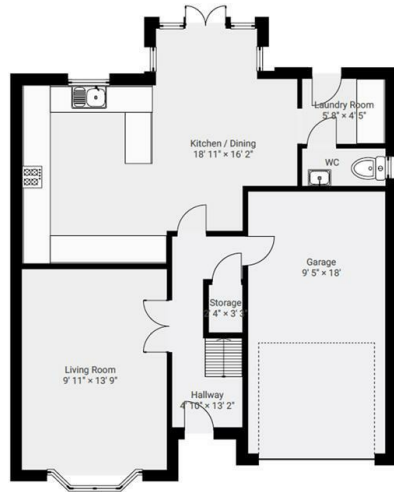
Square Box Media  
info@squareboxmedia.com  
www.squareboxmedia.com

This floorplan is provided without any warranty.  
The actual size of dimensions may vary and this  
floorplan is intended for illustrative purposes  
only.

0' 2' 4' 6' 8' 10' 1:92

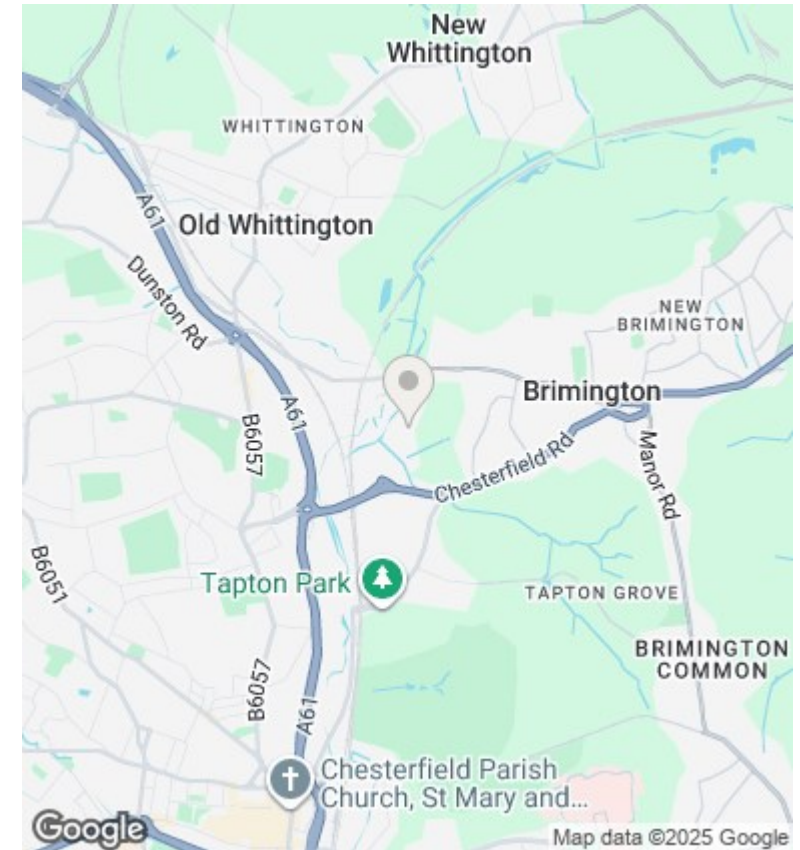
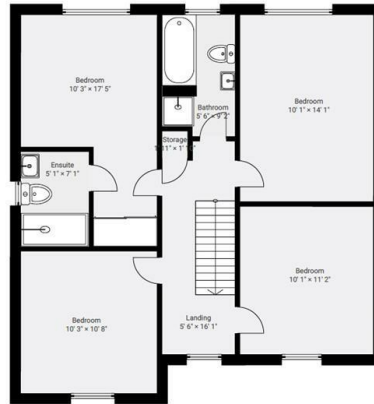
#### ▼ Ground Floor

TOTAL AREA: 634.32 sq ft



#### ▼ 1st Floor

TOTAL AREA: 672.45 sq ft



## Directions

## Viewings

Viewings by arrangement only. Call 01246 276 276 to make an appointment.

## Council Tax Band

A

EPC Rating:

B

Energy Efficiency Rating		
	Current	Potential
Very energy efficient - lower running costs		
(92-plus) A		93
(81-91) B	84	
(69-80) C		
(55-68) D		
(39-54) E		
(21-38) F		
(1-20) G		
Not energy efficient - higher running costs		
England & Wales	EU Directive 2002/91/EC	