



## Offers In The Region Of £127,000

- 2 Double bedrooms
- Generous bathroom
- Garden and patio area
- 2 Reception rooms
- New combi boiler with 10 year warrantee
- Ideal starter home
- Kitchen diner area
- Outside storage and shed
- Viewing is highly recommended

50 New Street, Chesterfield S42 5JW



Council Tax Band: A







Located on New street, North Wingfield this mid terrace home has an array of local shops close to hand, a supermarket, petrol station and good transport links to the M1. It is well presented throughout, has an enclosed rear garden area with a patio for entertaining and storage shed and outhouses. The property would make an ideal starter home or investment opportunity, perfect for those looking to step onto the property ladder or expand their investment portfolio.

Inside the property has a lounge to the front with a feature fireplace. There is a storage cupboard under the stairs and the dining room 1st floor above and leads into the kitchen. Complete with worktops, space for a washing machine plus a new oven 2024.

On the 1st floor the main bedroom sits to the front and has a view out. The second double is to the rear and has view out. The family bathroom sits alongside this and has a white shower over the bath. The windows are double glazed and fitted 2024 has a 10 year warrantee.

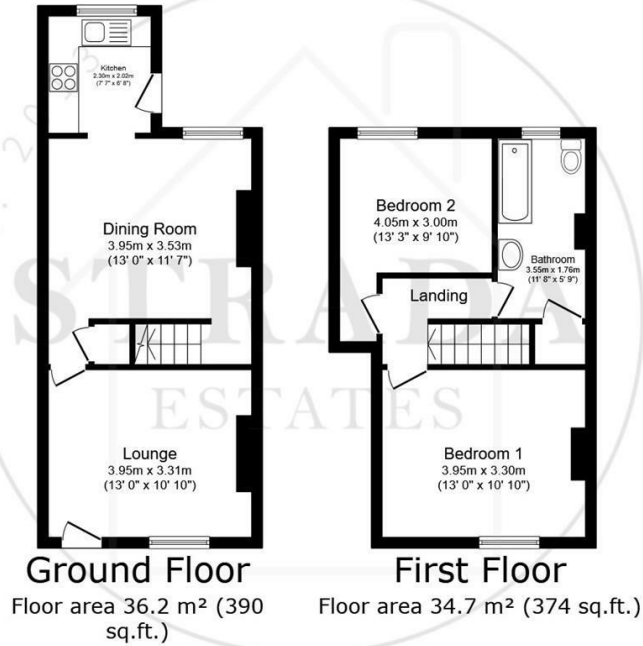
The property tenure is freehold and is council tax band A.











**TOTAL: 71.0 m<sup>2</sup> (764 sq.ft.)**

This floor plan is for illustrative purposes only. It is not drawn to scale. Any measurements, floor areas (including any total floor area), openings and orientations are approximate. No details are guaranteed, they cannot be relied upon for any purpose and do not form any part of any agreement. No liability is taken for any error, omission or misstatement. A party must rely upon its own inspection(s). Powered by www.Propertybox.io

Viewings by arrangement only. Call 01246 276 276  
to make an appointment.

