



## Offers In The Region Of £129,995

- 3 Double bedrooms
- Offered for sale with no chain
- Large garden with storage
- Ideal family home
- Requires a scheme of modernisation
- Kitchen diner
- Generous room sizes
- Off street parking
- Modern bathroom with tiles

# 11 Elm Street, Chesterfield S43 2HJ



Council Tax Band: A

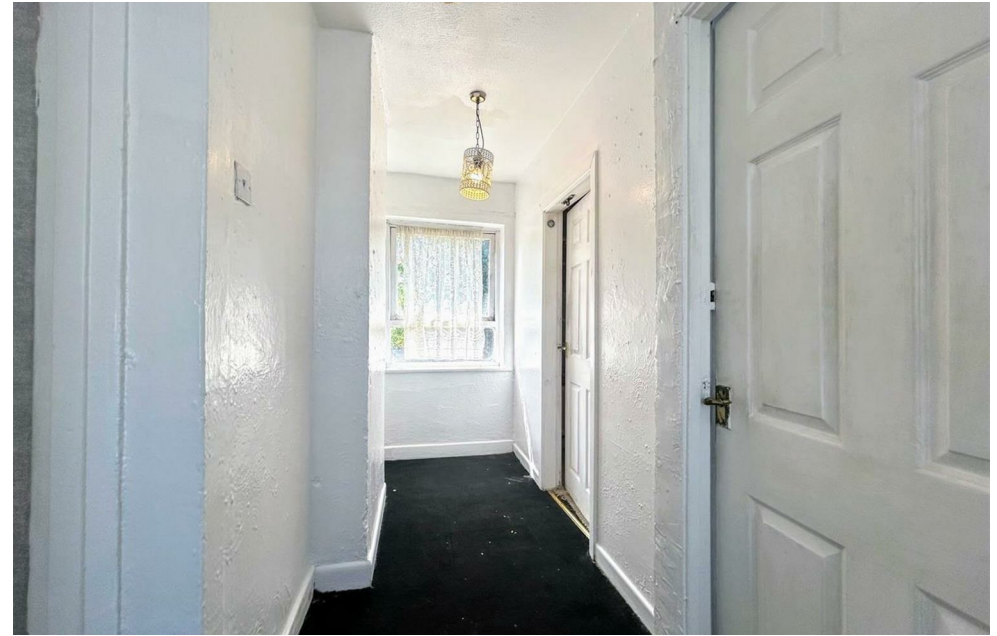


Located on Elm Street, Hollingwood, Chesterfield, this 3 bedroomed house boasts good transport links to the Chesterfield, train station, M1 and Staveley. The property requires a scheme of modernisation but could make a lovely family home or starter home.

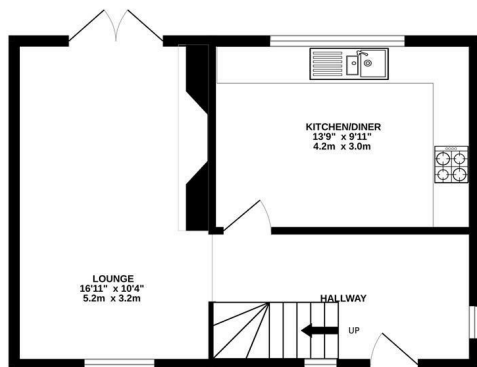
Outside there is off street parking to the front for multiple vehicles with a large garden to the rear, complete with brick built storage sheds. Entering the property the hallway has stairs leading to the 1st floor and storage and gives way to the lounge to the left of the property and the kitchen to the rear. The kitchen diner has ample space for dining and has fitted cabinets and worktops and space for appliances.

On the 1st floor there is a modern bathroom with a white 3 piece suite and tiles. There are 3 good sized double bedrooms making this ideal for families. The property has great scope to modernise and to make your own.

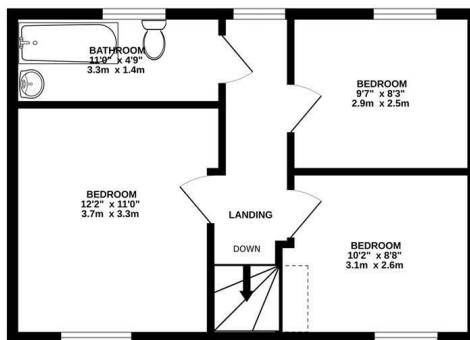
The council tax is band A, tenure a freehold and has gas central heating and double glazing throughout.



GROUND FLOOR  
393 sq.ft. (36.5 sq.m.) approx.



1ST FLOOR  
409 sq.ft. (38.0 sq.m.) approx.



TOTAL FLOOR AREA: 802 sq.ft. (74.5 sq.m.) approx.

Whilst every attempt has been made to ensure the accuracy of the floorplan contained here, measurements of doors, windows, rooms and any other items are approximate and no responsibility is taken for any error, omission or mis-statement. This plan is for illustrative purposes only and should be used as such by any prospective purchaser. The services, systems and appliances shown have not been tested and no guarantee as to their operability or efficiency can be given.

Made with Metropix ©2024

