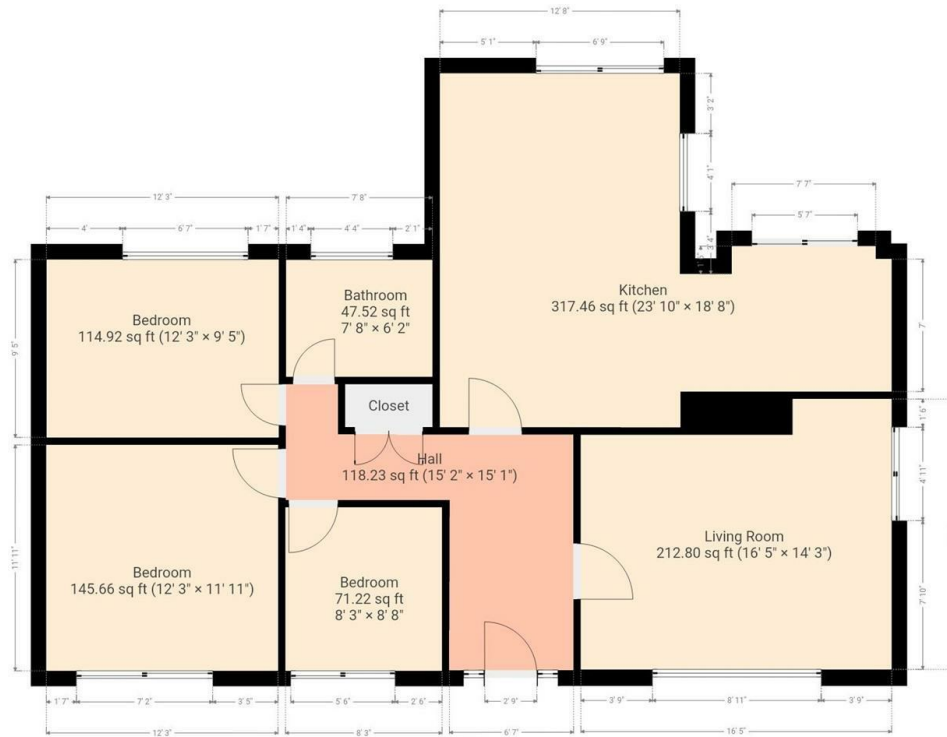




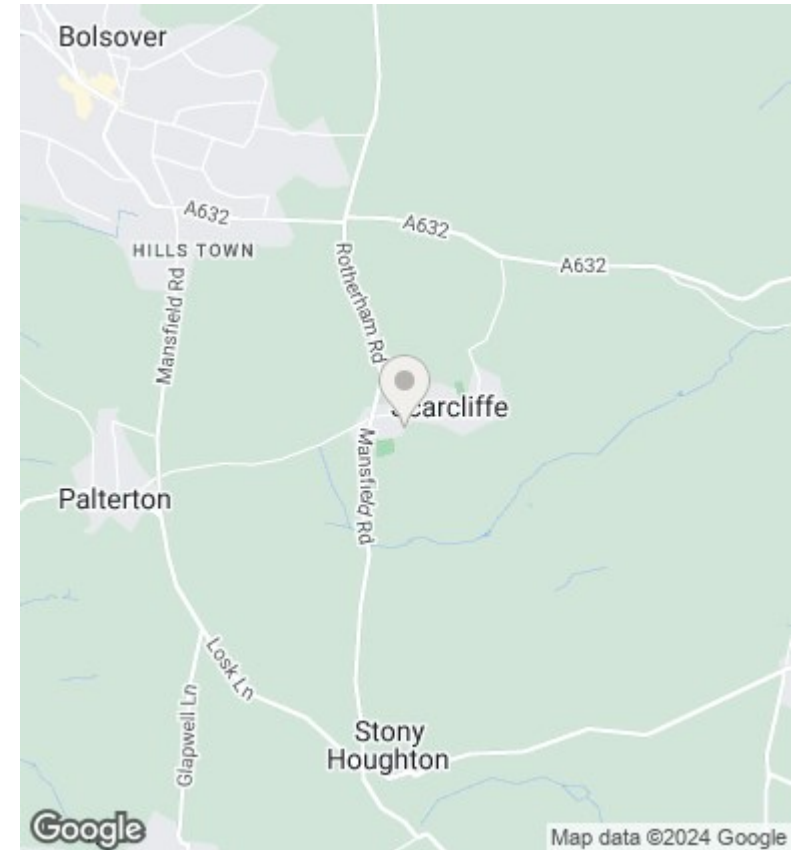
5 Main Street, Scarcliffe, Chesterfield, S44 6SZ

Offers In The Region Of £362,500

- Beautiful condition throughout
- Stunning kitchen diner
- Storage and log stores ideal for the log burner
- Viewing is highly recommended
- Semi rural location
- Patio seating areas with views
- Close to to the historic Bolsover with good local amenities
- 3 bedrooms
- Garage with power
- Fully renovated throughout



THIS FLOORPLAN IS PROVIDED WITHOUT WARRANTY OF ANY KIND. SENSOPIA DISCLAIMS ANY WARRANTY INCLUDING, WITHOUT LIMITATION, SATISFACTORY QUALITY OR ACCURACY OF DIMENSIONS.



Directions

Viewings

Viewings by arrangement only. Call 01246 276 276 to make an appointment.

Council Tax Band

EPC Rating:

Energy Efficiency Rating		
	Current	Potential
<i>Very energy efficient - lower running costs</i>		
(92 plus) A		
(81-91) B		
(69-80) C		
(55-68) D		
(39-54) E		
(21-38) F		
(1-20) G		
<i>Not energy efficient - higher running costs</i>		
England & Wales	EU Directive 2002/91/EC	