



Guide Price £200,000 -£210,000

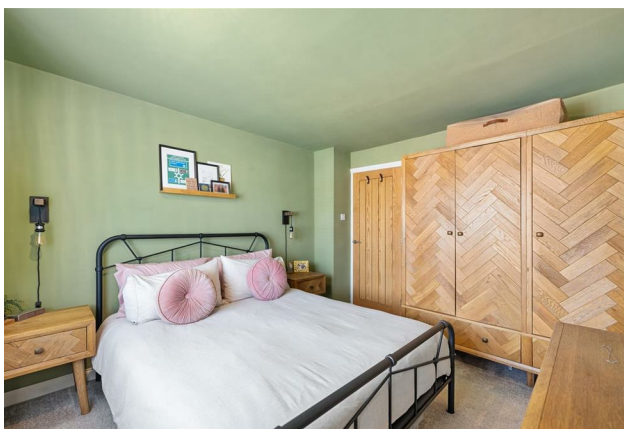
- Beautifully presented family home
- Off street parking
- Guide price £200,000 - £210,000
- Ideal for families or 1st time buyers
- Popular location with good commuter links to Sheffield
- Utility room and storage
- Early viewing is recommended
- Extended living area ideal for families
- Modern kitchen with integrated appliances
- Close to good local schooling

Osmund Road, Sheffield S21 4ES

 3  1  1  C

Council Tax Band: A





Guide price £200,000 - £210,000

Extended semi-detached house located on Osmund Road in the popular area of Eckington, Sheffield. The property is well proportioned and has contemporary styling throughout making this an attractive home for form families and 1st time buyers alike.

Outside this superb home has off street parking to the front for multiple vehicles, an enclosed rear garden with low maintenance astro turf, patio seating area and shed for storage. On the ground floor the property boasts a reception room, utility room/storage, kitchen with modern worktops, integrated appliances and cabinets, plus an extended dining area/sitting room, perfect for for families or entertaining friends.

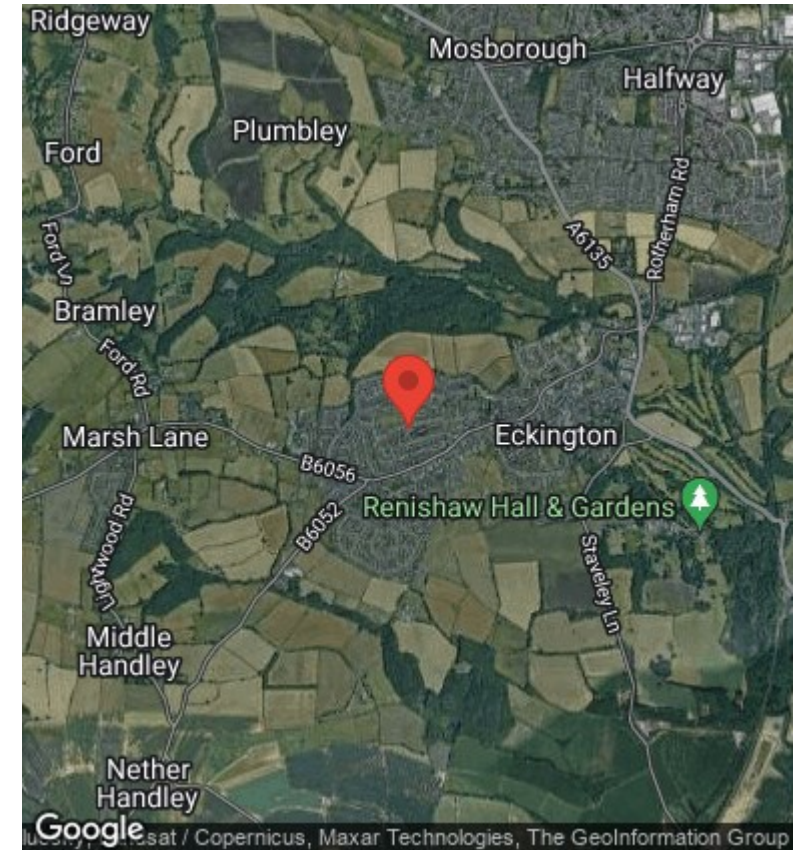
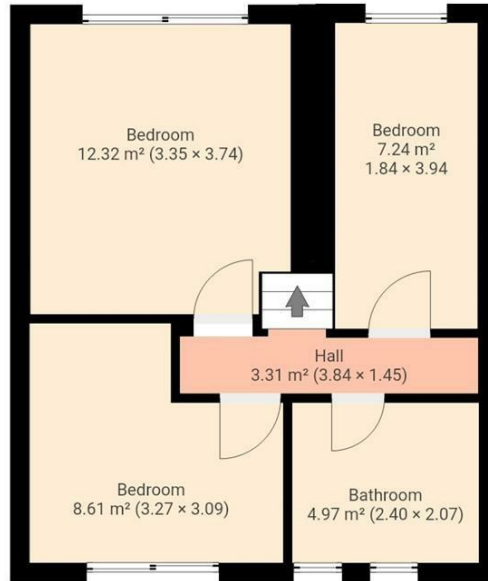
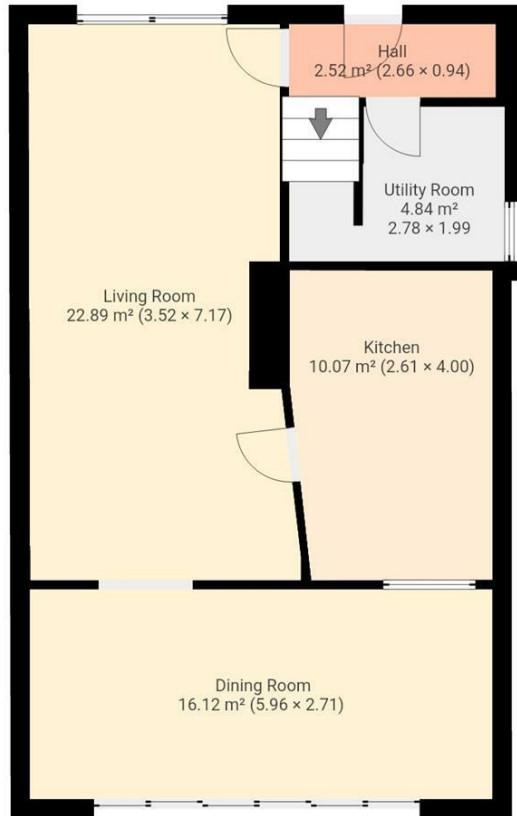
With three bedrooms, two double bedrooms and a single bedroom the 1st floor provides ample space for a growing family or for guests or home office. The house features a modern bathroom with a shower over the bath and storage. Gas central heating with a Combi boiler and double glazing keep the property warm.

Don't miss out on the chance to make this lovely house on Osmund Road your own. Book a viewing today and step into the beginning of your next chapter in this delightful property.

Council tax band A and the tenure is freehold.







Viewings

Viewings by arrangement only. Call 01246 276 276 to make an appointment.

THIS FLOORPLAN IS PROVIDED WITHOUT WARRANTY OF ANY KIND. SENSOPIA DISCLAIMS ANY WARRANTY INCLUDING, WITHOUT LIMITATION, SATISFACTORY QUALITY OR ACCURACY OF DIMENSIONS.

B