



## Offers In The Region Of £349,950

- 3 Bedroom detached bungalow
- Kitchen diner with integrated appliances
- Low maintenance rear garden
- Viewing is highly recommended
- Immaculately kept
- Popular location close to local amenities and Chesterfield Royal hospital
- Shower room recently fitted
- Off street parking and garage with power
- Conservatory located in the rear garden
- Master bedroom with Ensuite shower room

# Cotterhill Lane, Chesterfield S43 1NL



Council Tax Band: C





Detached 3 bedroom bungalow offered for sale in the popular area of Brimington, with good local amenities, shops, doctors surgery, supermarkets, the Chesterfield Royal hospital and Chesterfield town centre all within easy reach. Externally the property is set back from the road with a private driveway accessing a few properties. The property has a driveway with parking for multiple vehicles and access to the garage complete with power and lighting.

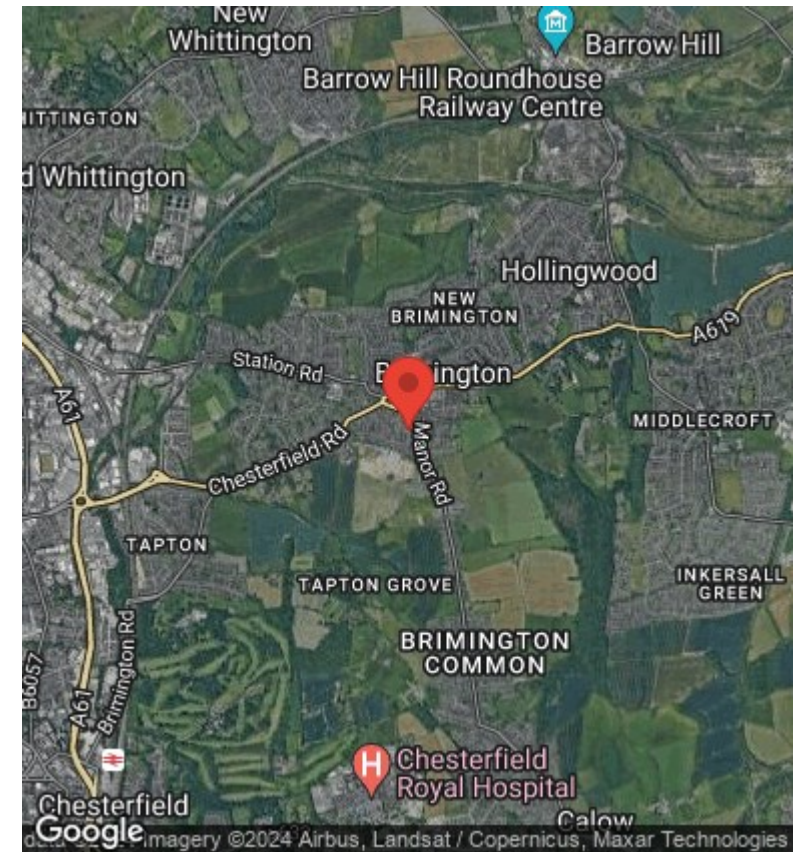
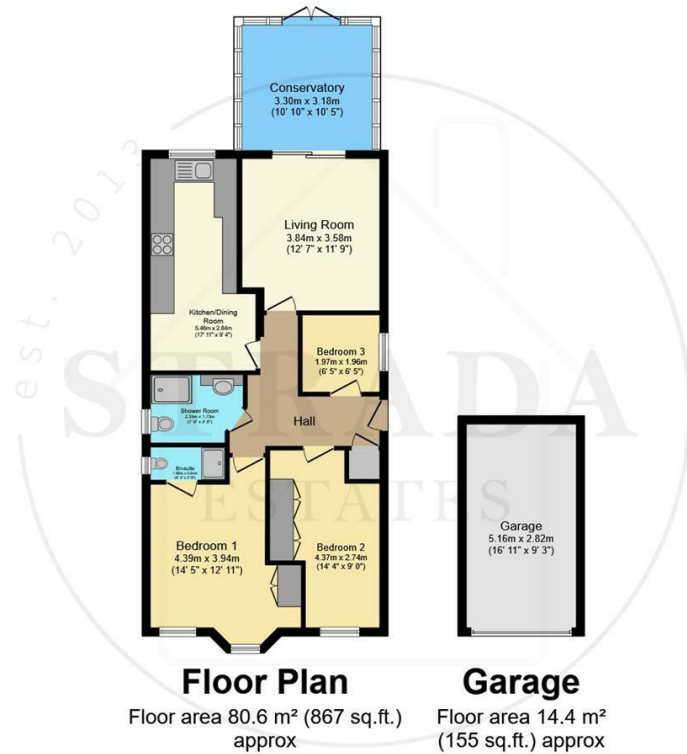
Inside the property has 3 bedrooms, a single bedroom currently being used as a dressing room, a double with integrated storage and the main bedroom benefiting from built in storage and an en suite shower room. The main bathroom/shower room has been recently fitted with a walk in shower, white suite and tiled walls.

The kitchen has integrated appliances, oven hob, microwave, dishwasher, washing machine and fitted cabinets and worktops. There is space for a dining table. The lounge has a feature electric fire, modern decor and access to the conservatory with electric heater and lighting. This gives access to the rear garden, which has been landscaped and is low maintenance and south facing.

The property tenure is freehold and sits in council tax band C.







Total floor area 94.9 m<sup>2</sup> (1,022 sq.ft.) approx

This plan is for illustration purposes only and may not be representative of the property. Plan not to scale. Powered by PropertyBox

## Viewings

Viewings by arrangement only. Call 01246 276 276 to make an appointment.