

PRINCE REGENT COURT, 8 AVENUE ROAD, ST JOHNS WOOD NW8 7RB



£2,100 PW

[£9,100 PCM] (FEES APPLY)

4 BEDROOM(S)

AVAILABLE: 26TH AUGUST 2019

Available for rental on a sole agency, a magnificent apartment offering spacious family accommodation in Prince Regent Court, a prestige modern portered block. EPC: C

- Prestige modern block
- 2nd floor apartment
- 2458 sq ft (228 sq m)
- Furnished or unfurnished
- Modern fully fitted kitchen
- Double aspect reception
- 3 x private balconies
- 4 x bedrooms; 2 x ensuite
- Shower room WC; Guest WC
- Allocated parking space

T: 020 7691 9000

E: info@excel-property.co.uk

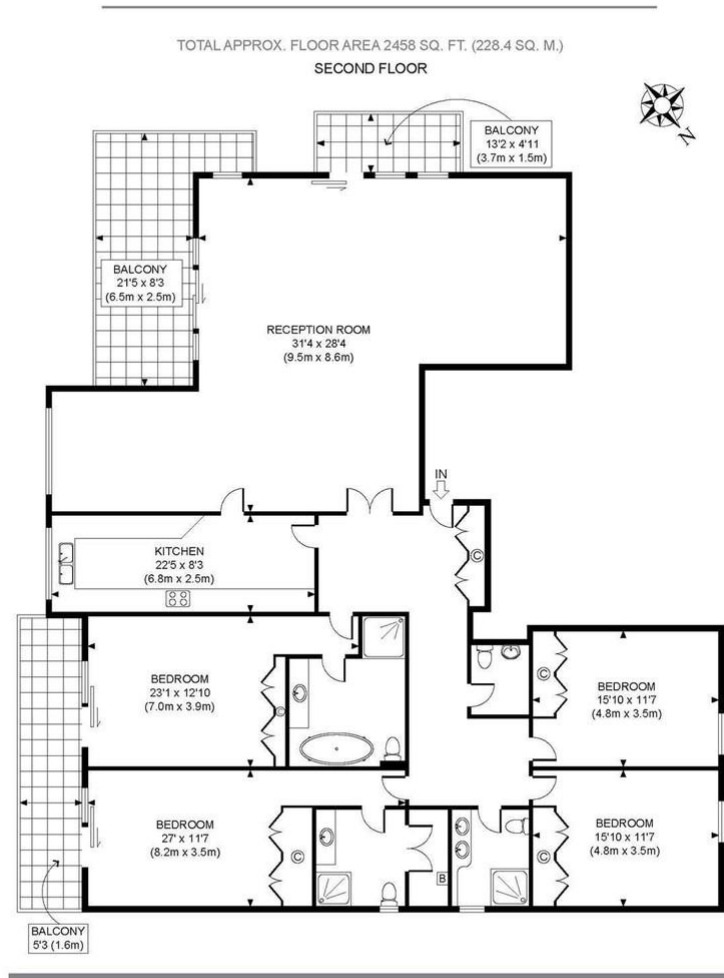
W: www.excel-property.co.uk

JP: www.excel-property.london/JP

A: 146 Finchley Road, London, NW3 5HS



PRINCE REGENT COURT, 8 AVENUE ROAD, ST JOHNS WOOD NW8 7RB



All measurements walls, doors, windows, fitting and their appliances, their size and locations are shown conventionally and are approximate only and cannot be regarded as being a representation either by the seller or his agent nor zentuvo
www.zentuvo.co.uk

T: 020 7691 9000

E: info@excel-property.co.uk

W: www.excel-property.co.uk

JP: www.excel-property.london/JP

A: 146 Finchley Road, London, NW3 5HS

