

BRIGHTVIEW COURT, FINCHLEY LANE, HENDON, NW4 1DL



£554 PW

[£2,400.00 PCM]

[FEES APPLY]

2 BEDROOM(S)

AVAILABLE: 18TH MARCH 2020

Available for long term rental this contemporary 2 bedroom, 2 bathroom apartment in a new build development with parking in the heart of Hendon, ideally located for the amenities of Hendon high street and the transport links of the underground station. EPC: B

- New build development
- Ground floor apartment
- Interior designed
- Wood flooring throughout
- Spacious reception
- Open plan kitchen
- Master bedroom suite
- Second double bedroom
- Family bathroom/WC
- Secure off street parking

T: 020 7691 9000

E: info@excel-property.co.uk

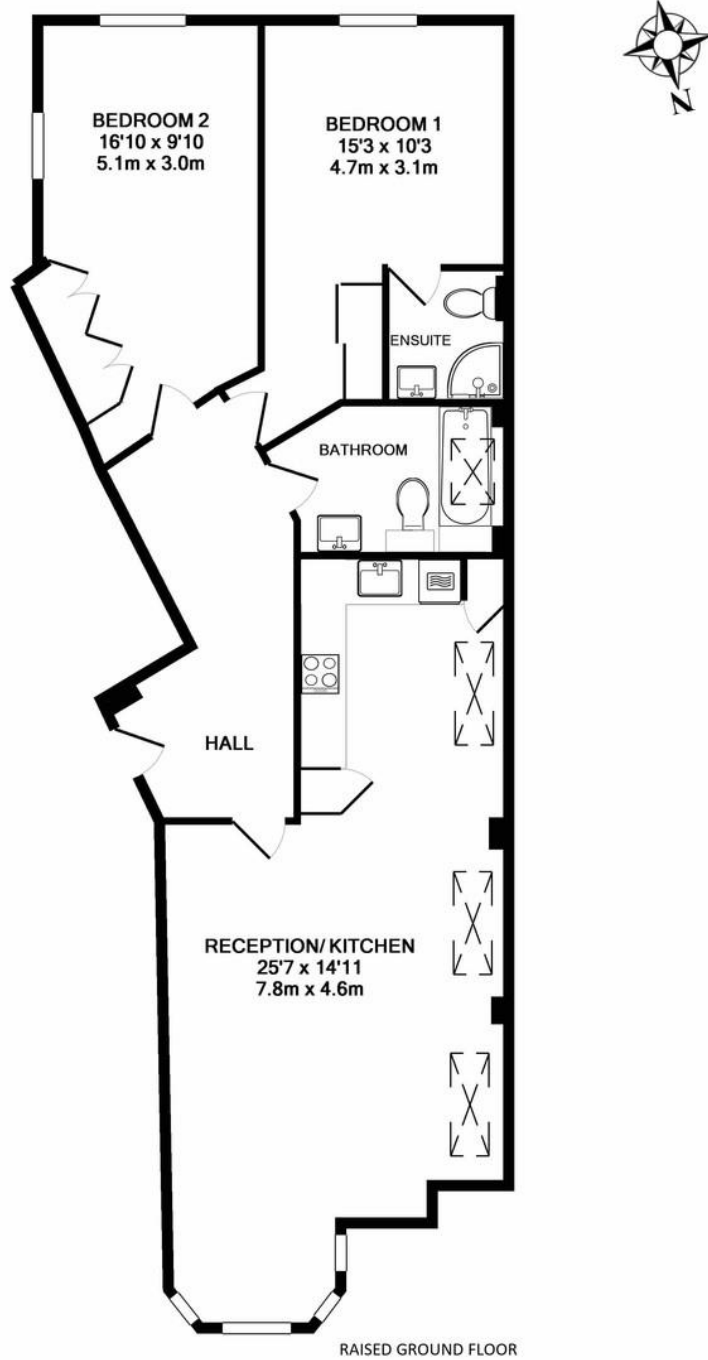
W: www.excel-property.co.uk

JP: www.excel-property.london/JP

A: 146 Finchley Road, London, NW3 5HS



BRIGHTVIEW COURT, FINCHLEY LANE, HENDON, NW4 1DL



BRIGHTVIEW COURT NW4
TOTAL APPROX. FLOOR AREA 917 SQ.FT. (85.2 SQ.M.)
Measurements are approximate. Not to scale. Illustrative purposes only

T: 020 7691 9000

E: info@excel-property.co.uk

W: www.excel-property.co.uk

JP: www.excel-property.london/JP

A: 146 Finchley Road, London, NW3 5HS

