

BLAZER COURT, 28A ST JOHNS WOOD ROAD, LONDON NW8 7JY



£612 PW

[£2650PCM] (FEES APPLY)

2 BEDROOM(S)

AVAILABLE: 5TH DECEMBER 2019

Available for long term rental a recently refurbished 840 sq ft (78 sq m) two bedroom property set on the 6th floor of Blazer Court, an exclusive residential apartment building directly opposite the main entrance of Lords, the world's most famous cricket ground, located on St Johns Wood Road. EPC: B

- Residential apartment building
- Views of Lords Cricket Ground
- 6th floor apartment
- Available furnished
- Reception with balcony
- Separate fitted kitchen
- 2 x bedrooms; Fitted robes
- En-suite shower/WC
- Family shower/WC
- 24-hour uniformed porters

T: 020 7691 9000

E: info@excel-property.co.uk

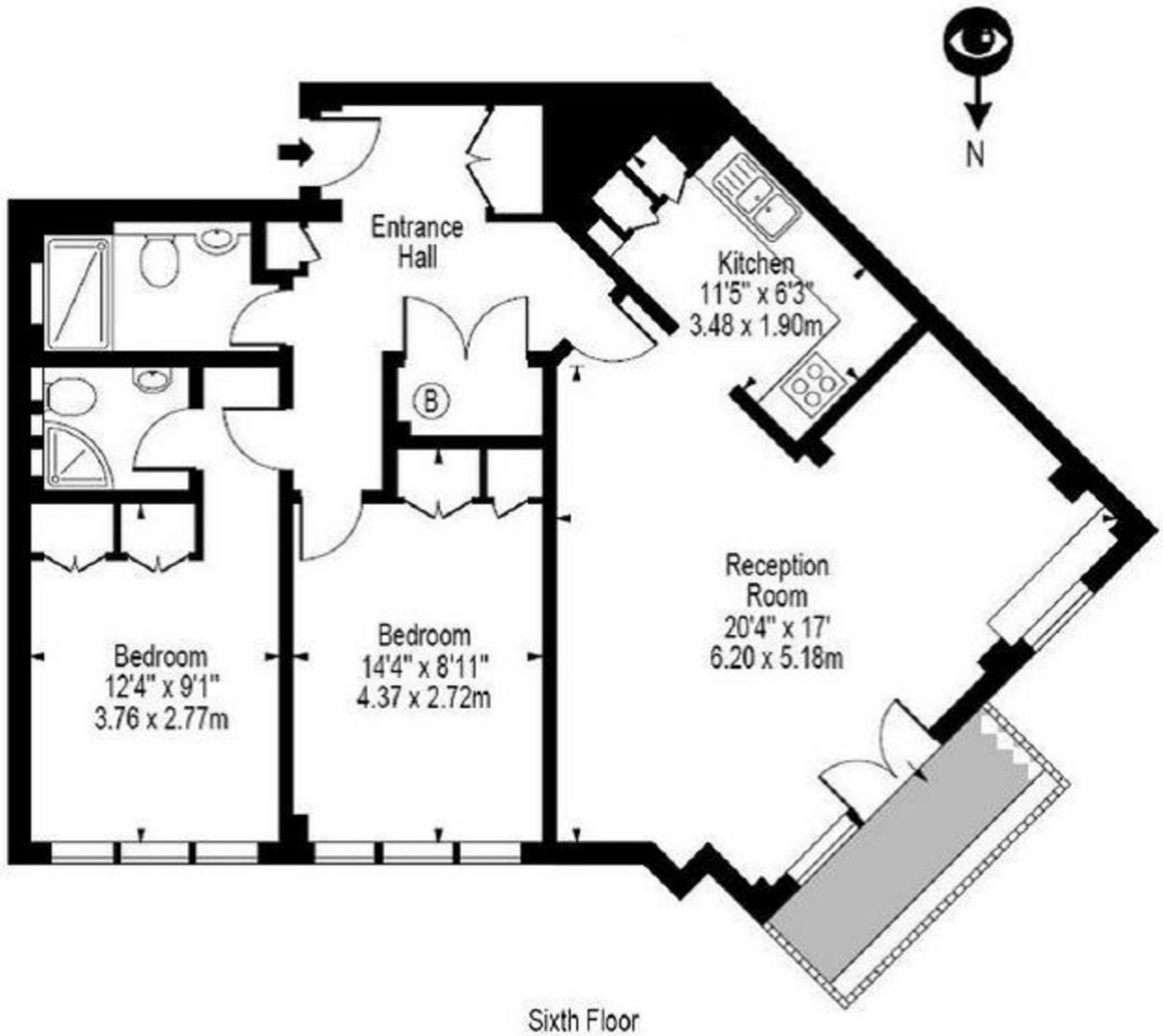
W: www.excel-property.co.uk

JP: www.excel-property.london/JP

A: 146 Finchley Road, London, NW3 5HS



BLAZER COURT, 28A ST JOHNS WOOD ROAD, LONDON NW8 7JY



Sixth Floor

Approx Gross Internal Area 840 Sq Ft - 78.04 Sq M

T: 020 7691 9000

E: info@excel-property.co.uk

W: www.excel-property.co.uk

JP: www.excel-property.london/JP

A: 146 Finchley Road, London, NW3 5HS

