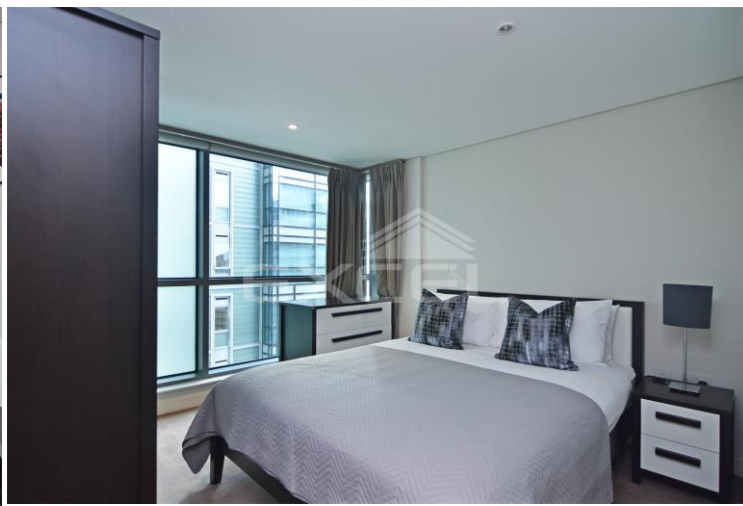


4B MERCHANT SQUARE EAST, HARBET ROAD, PADDINGTON W2 1AN



£995 PW

[£4,311.66 PCM] [FEES APPLY]

3 BEDROOM(S)

AVAILABLE: NOW

Stunning, interior designed 3-double bedroom apartment on the 4th floor of Merchant Square, superbly located within Paddington Basin adjacent to the Grand Union Canal, located minutes from the transport links of Edgware Road and Paddington stations. EPC: B

- Merchant Sq. development
- Next to Grand Union Canal
- Fourth floor apartment
- Furnished/unfurnished
- Reception with bay window
- Modern open plan kitchen
- 3 x double bedrooms
- 2 x bathroom/WC's
- 24-hour concierge
- Secure underground parking

T: 020 7691 9000

E: info@excel-property.co.uk

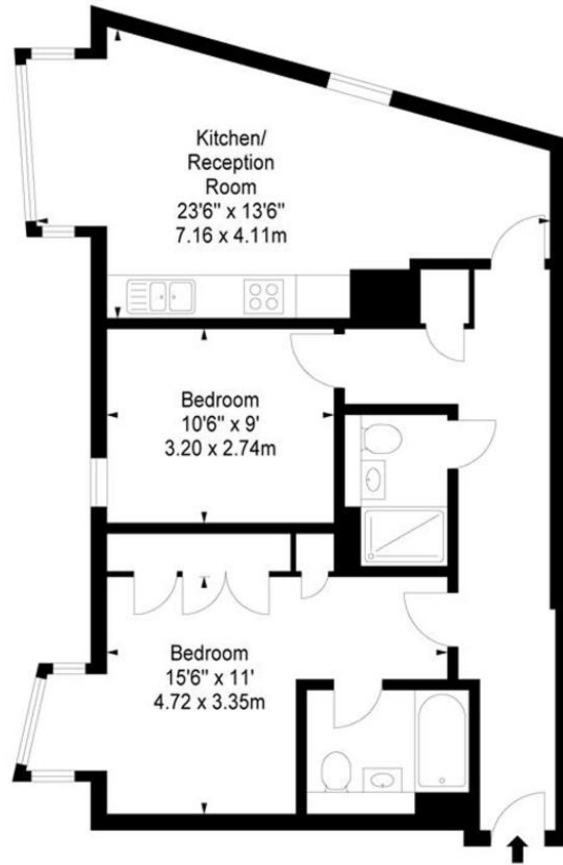
W: www.excel-property.co.uk

JP: www.excel-property.london/JP

A: 146 Finchley Road, London, NW3 5HS



4B MERCHANT SQUARE EAST, HARBET ROAD, PADDINGTON W2 1AN



T: 020 7691 9000

E: info@excel-property.co.uk

W: www.excel-property.co.uk

JP: www.excel-property.london/JP

A: 146 Finchley Road, London, NW3 5HS

