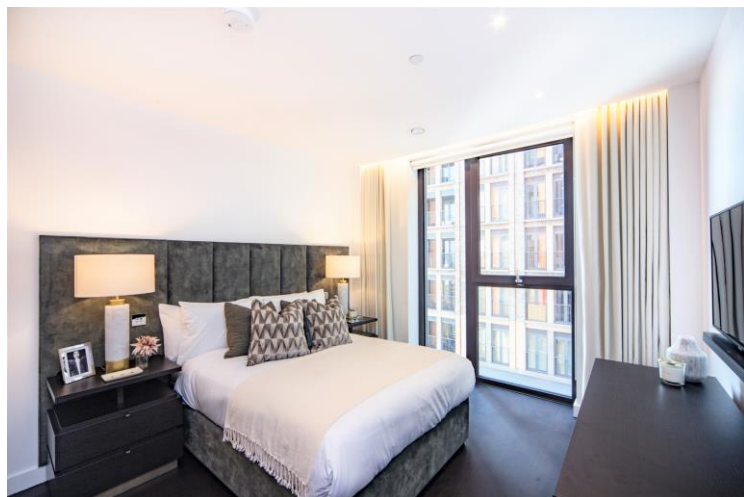


# THORNES HOUSE, 4 CHARLES CLOWES WALK, LONDON, SW11 7AG



**£935 PW**

**[£4,051.66 PCM]** [FEES APPLY]

**2 BEDROOM(S)**

**AVAILABLE: NOW**

This luxury two-bedroom apartment is situated in Thornes House forming part of the Residence Collection in Nine Elms on London's iconic South Bank. EPC: B

- Interior designed block
- Available furnished or unfurnished
- Spacious reception
- Fully fitted kitchen
- 2 x double bedrooms
- 1 x bathroom/WC
- 1 x en-suite bathroom
- Private balcony
- Lift service
- 24-hour concierge

**T:** 020 7691 9000

**E:** [info@excel-property.co.uk](mailto:info@excel-property.co.uk)

**W:** [www.excel-property.co.uk](http://www.excel-property.co.uk)

**JP:** [www.excel-property.london/JP](http://www.excel-property.london/JP)

**A:** 146 Finchley Road, London, NW3 5HS





THIRD FLOOR

	<p>Property Details:</p> <p><b>APARTMENT 16</b> <b>THORNES HOUSE</b> <b>4 CHARLES CLOWES WALK</b> <b>LONDON</b> <b>SW11 7AG</b></p>	<p>Surveyed and Drawn By:</p> <p><b>BKR</b></p> <p>Hideaway Work Space 1 Empire Mews London SW16 2BF</p>
<p>APPROX. GROSS INTERNAL AREA* Apartment - 886 Ft<sup>2</sup> - 82.31 M<sup>2</sup> Balcony - 43 Ft<sup>2</sup> - 3.99 M<sup>2</sup></p>	<p>Plans Drawn: 29.01.2019</p>	<p>Tel: 0345 257 2023 <a href="mailto:info@bkrfloorplans.co.uk">info@bkrfloorplans.co.uk</a> <a href="http://www.bkrfloorplans.co.uk">www.bkrfloorplans.co.uk</a></p> <p>© BKR 2019</p>

T: 020 7691 9000

E: [info@excel-property.co.uk](mailto:info@excel-property.co.uk)

W: [www.excel-property.co.uk](http://www.excel-property.co.uk)

JP: [www.excel-property.london/JP](http://www.excel-property.london/JP)

A: 146 Finchley Road, London, NW3 5HS