

# PELHAM COURT, 145 FULHAM ROAD, CHELSEA SW3 6SH



**£900 PW**

**[£3,900 PCM]** [FEES APPLY]

**2 BEDROOM(S)**

**AVAILABLE: 2ND SEPTEMBER 2022**

Available for rental a superb, trendy 2-bedroom apartment perfectly located within the heart of Chelsea, moments from the fashionable restaurants and designer shops of South Kensington, Knightsbridge and the Kings Road. EPC: D

- Central Chelsea location
- Portered apartment block
- 1st floor apartment
- Furnished/unfurnished
- Modern fitted kitchen
- 2 x double bedrooms
- Fitted wardrobes
- Family bathroom
- Prestigious location
- Communal garden

**T:** 020 7691 9000

**E:** [info@excel-property.co.uk](mailto:info@excel-property.co.uk)

**W:** [www.excel-property.co.uk](http://www.excel-property.co.uk)

**JP:** [www.excel-property.london/JP](http://www.excel-property.london/JP)

**A:** 146 Finchley Road, London, NW3 5HS

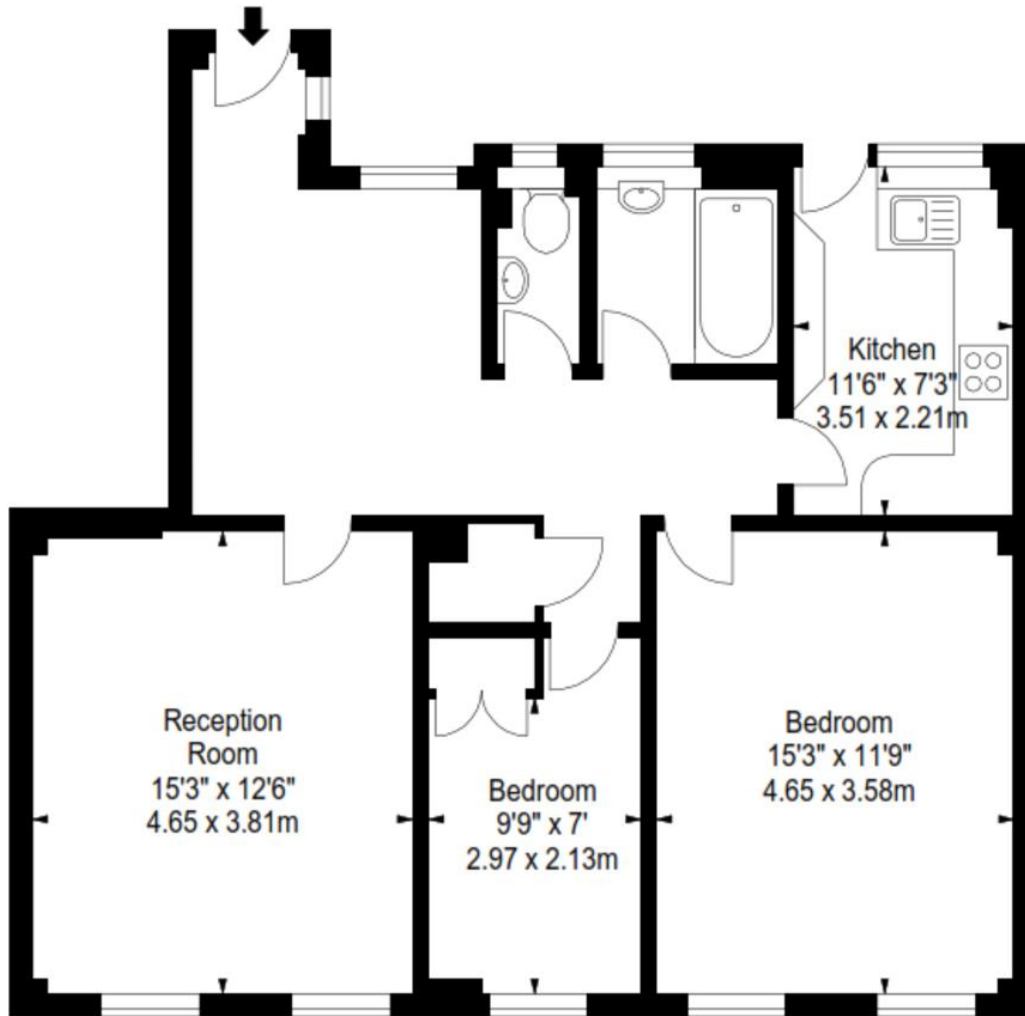


# PELHAM COURT, 145 FULHAM ROAD, CHELSEA SW3 6SH

## PELHAM COURT, SW3

APPROX. GROSS INTERNAL AREA \*  
820 Ft<sup>2</sup> - 76.18 M<sup>2</sup>

ILLUSTRATION FOR IDENTIFICATION PURPOSES ONLY. NOT TO SCALE  
\* As Defined by RICS - Code of Measuring Practice



FIRST FLOOR

T: 020 7691 9000

E: [info@excel-property.co.uk](mailto:info@excel-property.co.uk)

W: [www.excel-property.co.uk](http://www.excel-property.co.uk)

JP: [www.excel-property.london/JP](http://www.excel-property.london/JP)

A: 146 Finchley Road, London, NW3 5HS

