



2  1  1 

Birdwell Road, Sheffield, S3 8BL

BELVOIR!

Offers in Excess of £90,000



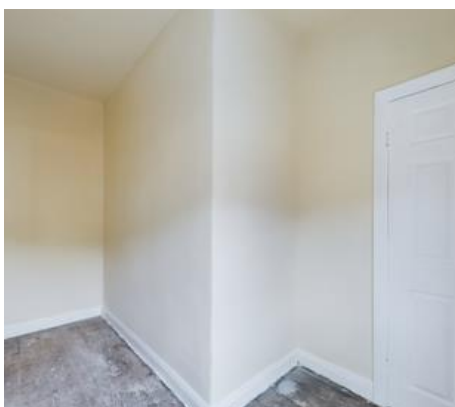
Key Features

- > Two Bedroom + Occasional Room
 - > Terraced House
 - > Vacant Possession
 - > No Chain
 - > Rear Garden
 - > EPC Rating D
 - > Tenure: Leasehold

Belvoir Sheffield are pleased to bring to the market this two-bedroom terraced house located close to Meadowhall shopping centre and train station.

It has vacant possession and no chain and will be ideal for a first-time buyer or investor alike.

Early viewing is advised



The property in brief comprises of newly fitted kitchen with space for dining table and a door accessing the cellar, spacious living room with feature fireplace and bay window, large double bedroom with bay window with door accessing an occasional room which could be utilised as a small child's room, a walk-in wardrobe or an office, second double bedroom and a bigger than average family bathroom with bath with shower over, sink with storage below, W.C and large storage cupboard. There is a rear garden which has shared access to the right of the property.

The property is in a popular location well placed to local amenities & transport links being close to Meadowhall train and bus station and the M1 motorway.

Additional Information

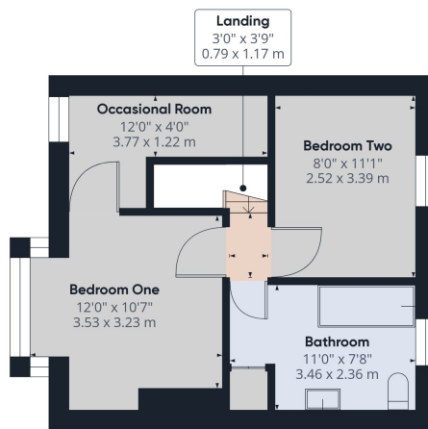
The property is leasehold with 84 years remaining on the lease Ground Rent £10 per annum • Council Tax Band: A (go to <http://cti.voa.gov.uk/cti/inits.asp>) • Central Heating: Gas

Disclaimers and Advice

We endeavour to make our sales particulars accurate and reliable, however, they do not constitute or form part of an offer or any contract and none is to be relied upon as statements of representation or fact. Any services, including but not limited to heating, plumbing or electrical systems and any appliances (if included in the sale) listed in this specification have not been tested by us and no guarantee as to their operating ability or efficiency is given. All measurements have been taken as a guide to prospective buyers only, and are not precise. If you require clarification or further information on any points, please contact us, especially if you are travelling some distance to view. Fixtures and fittings other than those mentioned are to be agreed with the seller by separate negotiation. If you already have or are considering purchasing a property to let, please contact us for specialist advice.



Floor 0



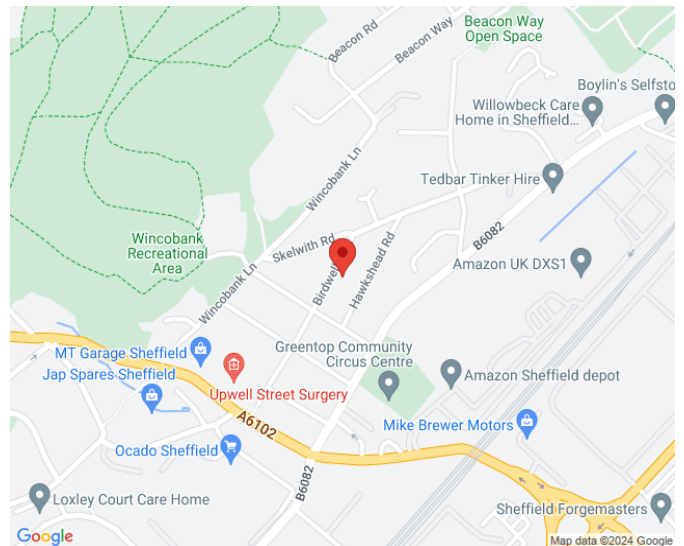
Floor 1

Approximate total area⁽¹⁾
693.3 ft²
64.41 m²

(1) Excluding balconies and terraces

While every attempt has been made to ensure accuracy, all measurements are approximate, not to scale. This floor plan is for illustrative purposes only.

GIRAFFE360



Contact us today to arrange a viewing...

BELVOIR!

www.belvoir.co.uk/offices/sheffield

0114 252 5215