



THE
PARK LANE GROUP

EST.
1987

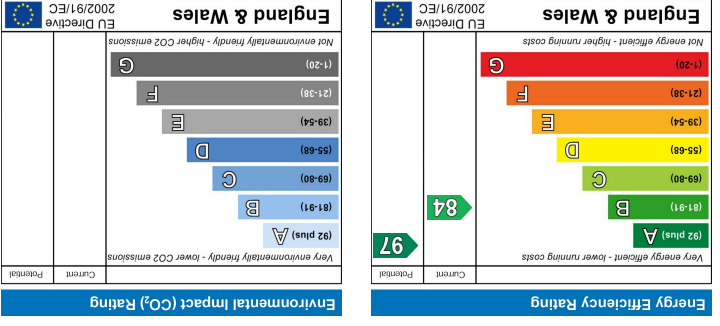
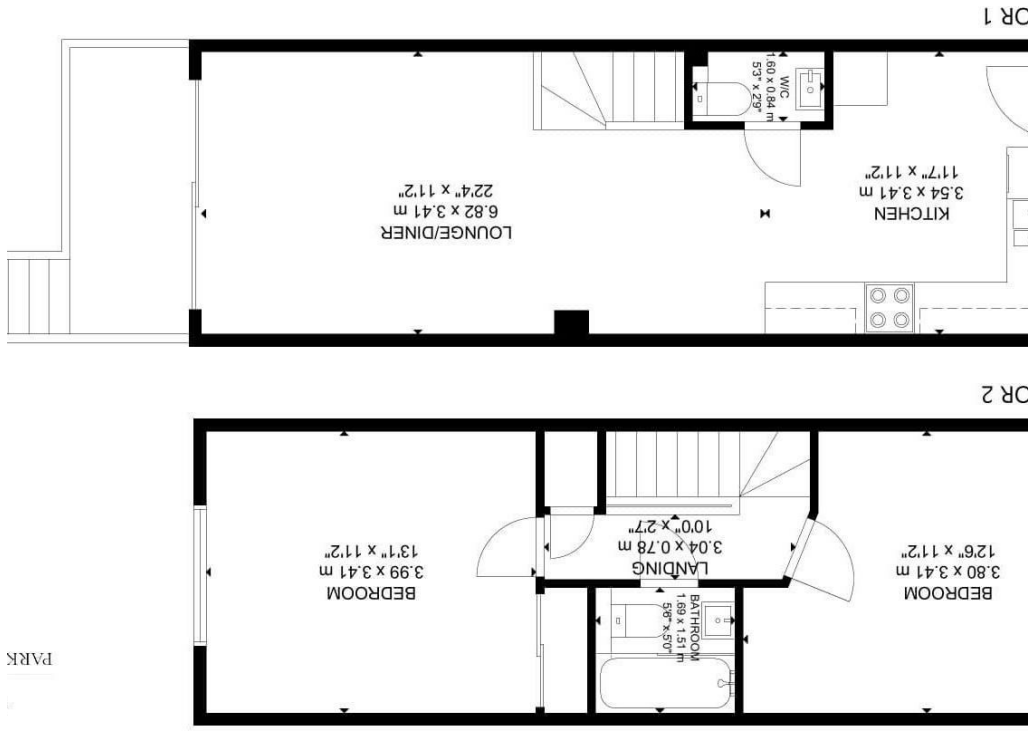


Midicy Court, Hawkhurst, Cranbrook

£1,395 Per Month PCM

House - Terraced
Deposit: £1,609
Council Tax Band: C





- *AVAILABLE NOW*
- Set Back Beyond a Pillared Entrance with Electric Gates
- Fully Equipped Designer Kitchen
- Spacious Master Bedroom with Fitted Wardrobes
- Private Off-Street Parking for One Car
- High Specification Finish
- Extensive Patio & Lawned Garden
- Close to Schools, Shops & Transport Links
- Located within the highly sought-after Cranbrook School Catchment Area
- Exclusively Private Gated Development



IMPORTANT NOTICE – These particulars have been prepared in good faith and they are not intended to constitute part of an offer or contract. We have not performed a structural survey on this property and the services, appliances and specific fittings have not been tested. All photographs, measurements, floor plans and distances referred to are given as a guide and should not be relied upon.