



THE  
PARK LANE GROUP



## Hornbeam Heights, Hawthorn Road, Hastings

House - Townhouse

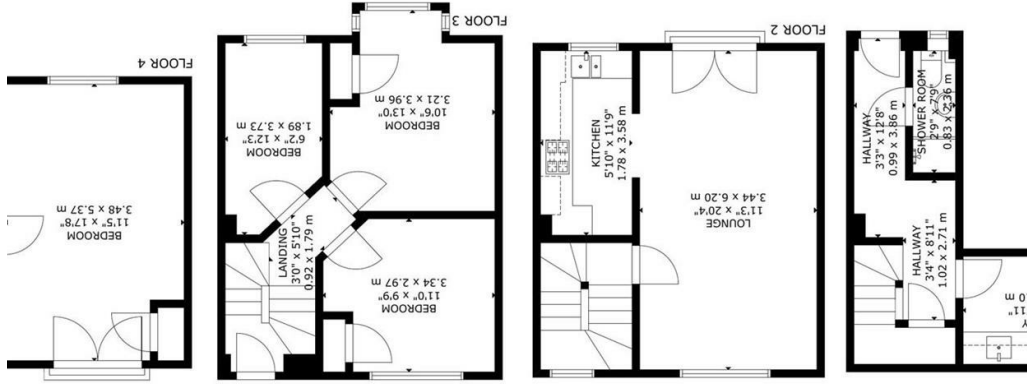
Deposit: £1,609

Council Tax Band: C

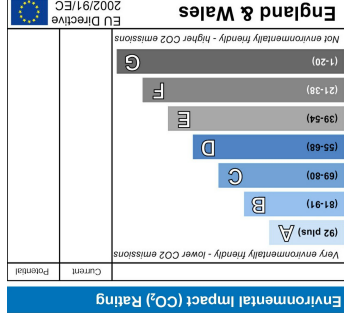
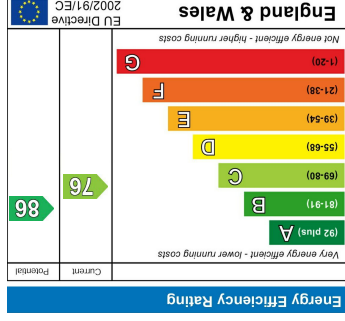
£1,395 Per Month PCM



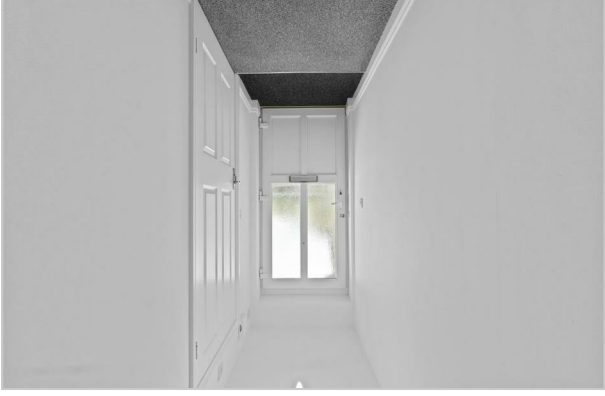




SIZE AND DIMENSIONS ARE APPROXIMATE. ACTUAL MAY VARY  
GROSS INTERNAL AREA  
TOTAL: 115 m<sup>2</sup>/1,236 sq ft  
FLOOR 1: 19 m<sup>2</sup>/207 sq ft, FLOOR 2: 33 m<sup>2</sup>/355 sq ft  
FLOOR 3: 35 m<sup>2</sup>/371 sq ft, FLOOR 4: 28 m<sup>2</sup>/300 sq ft



- \* AVAILABLE NOW\*
- Four Bedroom Townhouse
- Separate shower room with WC on the ground floor
- Utility room with space for washing machine and tumble dryer
- Fitted kitchen with integrated stainless steel oven, gas hob, and extractor hood
- Master bedroom and family bathroom on the top floor
- Convenient location with easy access to local amenities and transport links
- Garage
- Double glazing and gas central heating throughout



**IMPORTANT NOTICE** – These particulars have been prepared in good faith and they are not intended to constitute part of an offer or contract. We have not performed a structural survey on this property and the services, appliances and specific fittings have not been tested. All photographs, measurements, floor plans and distances referred to are given as a guide and should not be relied upon.