



THE
PARK LANE GROUP

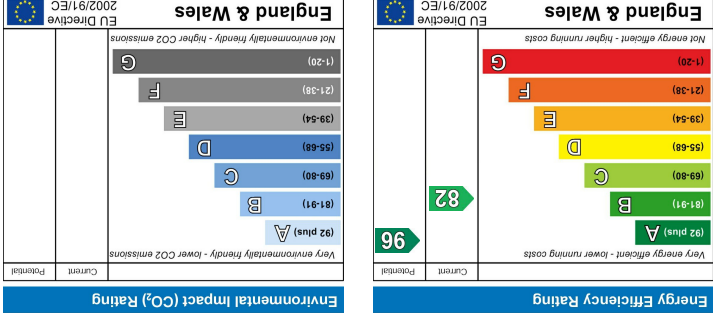
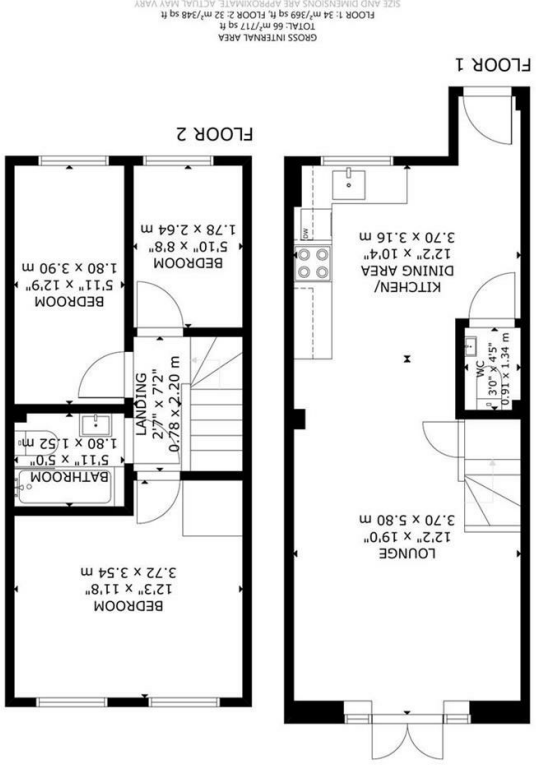


Upper Broomgrove Road, Hastings

£1,245 Per Month PCM

House - Terraced
Deposit: £1,436
Council Tax Band: B





- *AVAILABLE NOW*
- Contemporary Fitted Kitchen with Integrated Appliances
- Private Driveway Parking
- Private Rear Garden with Patio & Shed
- Double Glazing & Gas Central Heating
- Venetian Blinds Fitted Throughout
- Close to Ore Station
- Spacious Three Bedrooms
- Less Than 10 Minutes from Hastings Town Centre & Seafont
- Spacious Open-Plan Kitchen, Living & Dining Area



IMPORTANT NOTICE – These particulars have been prepared in good faith and they are not intended to constitute part of an offer or contract. We have not performed a structural survey on this property and the services, appliances and specific fittings have not been tested. All photographs, measurements, floor plans and distances referred to are given as a guide and should not be relied upon.