



**Knutsford**  
Centennial Place, Northwich Road





# Knutsford, WA16 0AW

## Centennial Place, Northwich Road

### £2,600.00 PCM No Service Charge/ Ground Rent



#### The Property

This immaculately appointed and much improved, two-bedroom, two bathroom apartment forms part of the exclusive McCarthy and Stone, Centennial Place development specifically designed for the over-60s and is now available to Let. Located in a prime first floor position with far reaching views, this exceptional home offers light, spacious and flexible living accommodation in a contemporary style. Particular mention has to be made of the large open plan living dining room, with dual aspect allowing floods of natural daylight and bespoke electric feature fire, the large principal bedroom with walk in wardrobe and beautiful ensuite shower room as well as the separate utility room offering ample storage, unusual for a property of this type and style. Whilst the apartment is offered on an un-furnished basis the second bedroom is home to fitted cabinetry ideal as home study and can adapted to accommodate a bed to add the addition of a guest bedroom. The property is approached over a sweeping

driveway. There is an allocated parking space with this property. The communal entrance is accessed at the front of the building and has lift access to all floors. The communal lounge is simply stunning, with a variety of seating areas and kitchen with fitted appliances. The established grounds are a true delight with communal lawns, various seating and patio areas bordered by a multitude of mature trees, hedging, foliage and feature planting.

#### Directions

From the roundabout in Canute Square travel along Northwich Road (A5033) past The Heath where Centennial Place will soon be seen on the right-hand side.

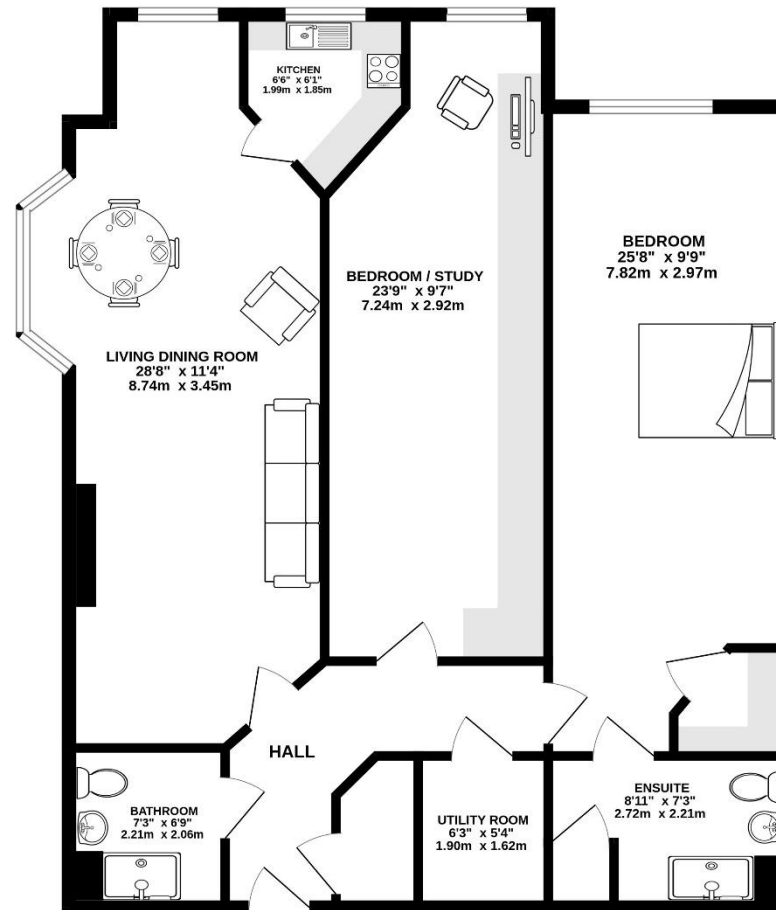


- Immaculately presented 1<sup>st</sup> floor apartment
- Situated in a sought-after Knutsford town centre location
- Spacious living accommodation
- Kitchen with integrated appliances
- Two generous bedrooms
- Two bathrooms (one en-suite)
- Stunning communal suite and gardens
- Unfurnished

**Postcode** – WA16 0AW  
**Local Authority** – Cheshire East  
**Council Tax** – Band E  
**EPC** - B



FIRST FLOOR  
1130 sq.ft. (105.0 sq.m.) approx.



TOTAL FLOOR AREA : 1130 sq.ft. (105.0 sq.m.) approx.

Whilst every attempt has been made to ensure the accuracy of the floorplan contained here, measurements of doors, windows, rooms and any other items are approximate and no responsibility is taken for any error, omission or mis-statement. This plan is for illustrative purposes only and should be used as such by any prospective purchaser. The services, systems and appliances shown have not been tested and no guarantee as to their operability or efficiency can be given.  
Made with Metropix ©2025

103 King Street, Knutsford, Cheshire, WA16 6EQ

01565 654 000

E: [info@irlamsestateagents.co.uk](mailto:info@irlamsestateagents.co.uk)

[www.irlamsestateagents.co.uk](http://www.irlamsestateagents.co.uk)

I1021\_ Printed by Ravensworth 01670 713330

Irlams (Estate Agents) Ltd for themselves and for the vendors or lessors of this property whose agents they are give notice that:

- The particulars are set out as a general outline only for the guidance of intending purchasers or lessees, and do not constitute, nor constitute part of, an offer or contract;
- All descriptions, dimensions, references to condition and necessary permissions for use and occupation, and other details are given in good faith and are believed to be correct but any intending purchasers or lessees should not rely on them as statements or representations of fact, but must satisfy themselves by inspection or otherwise as to the correctness of each of them;
- No person in the employment of Irlams (Estate Agents) Ltd has any authority to make or give any representation or warranty whatsoever in relation to this property.
- We believe the information above to be accurate at the point it was obtained however you may wish to make a final check with your Solicitor or with us in respect of anything above you feel crucial before you proceed with the purchase of this property.

