



Henbury  
The Rye, Curtis Farm, Chelford Road





# Henbury, SK11 9PG

## Chelford Road

Prices from £450,000



### The Property

A beautifully designed three bedroom home combining elegance and practicality. The ground floor features an open-plan kitchen-diner with garden access, a separate lounge and a WC with utility space. Upstairs offers a master with en-suite, a generous second bedroom, and a versatile third for guests or work. Vaulted ceilings and roof lights enhance the airy, contemporary feel throughout. Designed for comfort and contemporary style, this home defines modern luxury living. Discover a place where life comes naturally. Nestled in a serene semi-rural setting, this charming community blends tranquil countryside views with thoughtfully designed on-site facilities, creating the perfect balance of beauty, convenience, and a life well-lived.

Designed with care for the future, the scheme embraces sustainability through energy-efficient homes, eco-conscious materials, and thoughtful landscaping that harmonises with the natural surroundings.

### Directions

From Knutsford Town Centre proceed along the A537 for approx 9 miles passing the rail station continue along Chelford Road passing through Ollerton and Marthall where the entrance to the development will soon be seen on your left.

- Stunning new build property situated in a serene semi-rural location
- Embracing sustainability through energy-efficient homes using eco-conscious materials
- Spacious & flexible contemporary living
- Open plan dining kitchen
- Downstairs WC & utility
- Three generous bedrooms
- Two bathrooms (one en-suite)
- Beautiful, enclosed private garden
- Off road parking & EV charging point
- Option to personalise your home with custom finishes

**Postcode** – SK11 9PG

**Tenure** – Freehold

**Local Authority** – Cheshire East

**Council Tax** – Band TBC



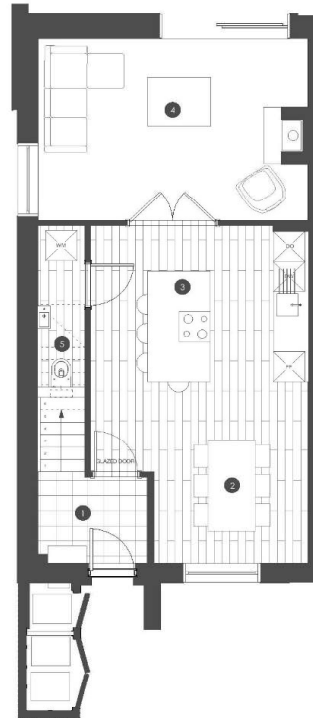
## HOUSE TYPE 3B

### ROOM DIMENSIONS

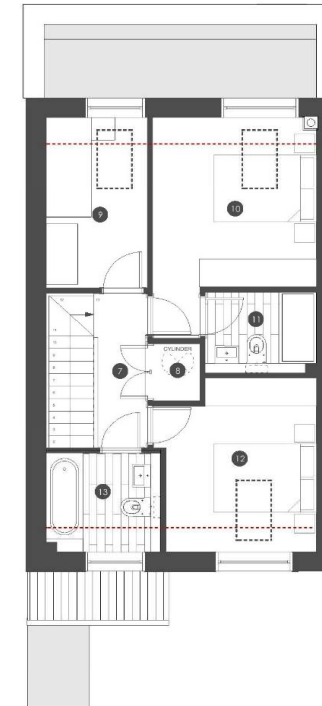
1 BOOT ROOM	2083 x 1716mm MAX
2 DINING	2919 x 2819mm MAX
3 KITCHEN	4927 x 4183mm MAX
4 LIVING	5134 x 3640mm MAX
5 WC	1715 x 900mm MAX
7 LANDING	3100 x 950mm MAX
8 STORE	1141 x 945mm MAX
9 BED 3/STUDY	3416 x 1924mm MAX
10 BED 1	4414 x 3111mm MAX
11 EN SUITE	2111 x 1618mm MAX
12 BED 2	3480 x 2860mm MAX
13 BATHROOM	2178 x 1969mm MAX

### AREA

GIA - 98.4sqm



**GROUND FLOOR PLAN**  
1:100 @ A3



**FIRST FLOOR PLAN**  
1:50 @ A3

103 King Street, Knutsford, Cheshire, WA16 6EQ

01565 654 000

E: [info@irlamsestateagents.co.uk](mailto:info@irlamsestateagents.co.uk)

[www.irlamsestateagents.co.uk](http://www.irlamsestateagents.co.uk)

I1021\_ Printed by Ravensworth 01670 713330

Irlams (Estate Agents) Ltd for themselves and for the vendors or lessors of this property whose agents they are give notice that:

(a) The particulars are set out as a general outline only for the guidance of intending purchasers or lessees, and do not constitute, nor constitute part of, an offer or contract;

(b) All descriptions, dimensions, references to condition and necessary permissions for use and occupation, and other details are given in good faith and are believed to be correct but any intending purchasers or lessees should not rely on them as statements or representations of fact, but must satisfy themselves by inspection or otherwise as to the correctness of each of them;

(c) No person in the employment of Irlams (Estate Agents) Ltd has any authority to make or give any representation or warranty whatsoever in relation to this property.

(d) We believe the information above to be accurate at the point it was obtained however you may wish to make a final check with your Solicitor or with us in respect of anything above you feel crucial before you proceed with the purchase of this property.