



Knutsford
Oakwood, Tabley Road



Knutsford, WA16 0PQ

Oakwood, Tabley Road

£180,000



The Property

This beautiful, bright, ground floor, two-bedroom apartment forms part of a charming and beautifully-maintained retirement development for the over 60's and is a shining example of its type in the local market. Positioned on the ground floor in the corner of the building with additional kitchen window allowing floods of natural light, the property offers generous room proportions and would be suitable for immediate occupation. The development itself sits in a convenient position on a leafy, tree-lined road opposite The Heath and within a short stroll of all local amenities.

Residents have use of a lovely communal lounge with toilet facilities, overnight suites for guests (subject to charges) and on-site house managers throughout the week.

The property sits in well-stocked and well-maintained grounds, with communal lawns bordered by mature trees, shrubs and flower beds. Approached via a communal car park with spaces subject to availability, the development also benefits from reserved visitors' spaces.

Directions

From the roundabout in Canute Square travel along Manchester Road (A50) passing The Heath on your left. Turn left into Tabley Road and the entrance to Oakwood will soon be seen on your right.

- A beautifully presented ground floor retirement apartment
- Situated in the heart of Knutsford Town Centre
- A short stroll to all local amenities
- Living dining room
- Fitted kitchen
- Two spacious bedrooms
- Shower room
- Communal gardens
- Parking
- Communal lounge & guest suite facilities for visitors

Postcode – WA16 0NY

EPC Rating – D

Tenure – Leasehold

Service Charge: £3,041pa

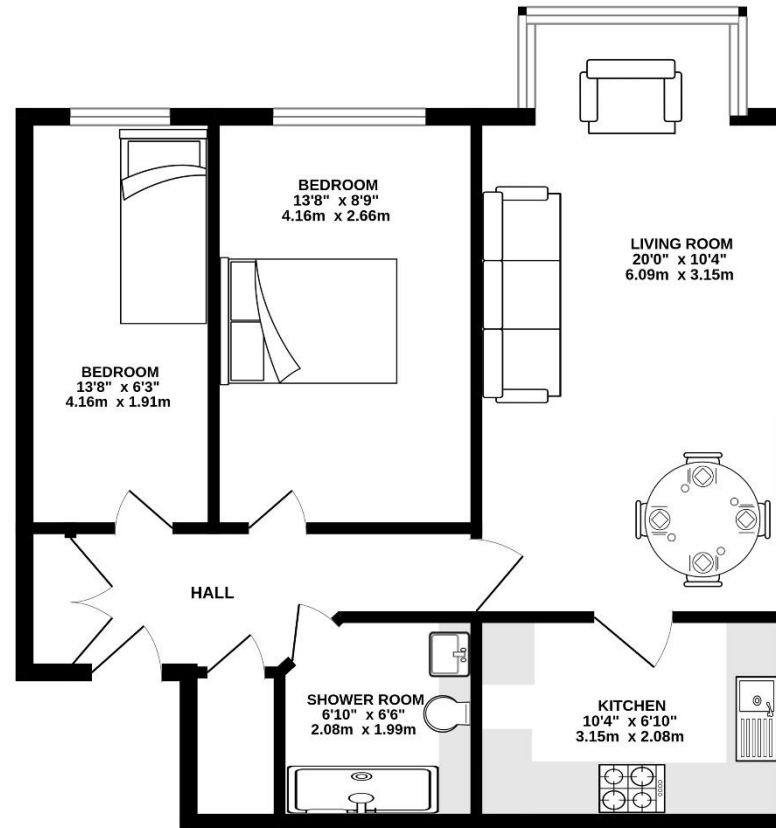
Ground Rent: £70 pa

Local Authority – Cheshire East

Council Tax – Band B



GROUND FLOOR
590 sq.ft. (54.8 sq.m.) approx.



TOTAL FLOOR AREA: 590 sq.ft. (54.8 sq.m.) approx.

Whilst every attempt has been made to ensure the accuracy of the floorplan contained here, measurements of doors, windows, rooms and any other items are approximate and no responsibility is taken for any error, omission or mis-statement. This plan is for illustrative purposes only and should be used as such by any prospective purchaser. The services, systems and appliances shown have not been tested and no guarantee as to their operability or efficiency can be given.
Made with Metropix ©2005

103 King Street, Knutsford, Cheshire, WA16 6EQ

01565 654 000

E: info@irlamsestateagents.co.uk

www.irlamsestateagents.co.uk

I1021_ Printed by Ravensworth 01670 713330

Irlams (Estate Agents) Ltd for themselves and for the vendors or lessors of this property whose agents they are give notice that:

- (a) The particulars are set out as a general outline only for the guidance of intending purchasers or lessees, and do not constitute, nor constitute part of, an offer or contract;
- (b) All descriptions, dimensions, references to condition and necessary permissions for use and occupation, and other details are given in good faith and are believed to be correct but any intending purchasers or lessees should not rely on them as statements or representations of fact, but must satisfy themselves by inspection or otherwise as to the correctness of each of them;
- (c) No person in the employment of Irlams (Estate Agents) Ltd has any authority to make or give any representation or warranty whatsoever in relation to this property.

