



Knutsford
Hamman Drive


IRLAMS
of Knutsford



Knutsford, WA16 8FN

Hamman Drive

Offers over £485,000



The Property

This immaculately presented three-bedroom, two-bathroom modern, detached property, constructed in 2023 by renowned builders Bellway Homes, has been sympathetically improved by the current owner to now provide well balanced, light, spacious and flexible living accommodation in a contemporary style. Particular mention must be made of the stunning, open plan Living Dining Kitchen with Amtico flooring, fitted appliances, stone worktops and French doors to the landscaped garden, the master bedroom with fitted wardrobes and en-suite shower room as well as the beautifully appointed family bathroom, dual aspect lounge with feature electric stove and fitted wardrobes to all bedrooms.

Located in a lovely position on the development and not overlooked at the front situated on the edge of the town, walking distance to all local amenities, whilst being ideally positioned for all major network links to the Northwest and beyond.

The property is approached over flagged pathway, flanked by lawned garden to either side with well stocked borders and large, block paved driveway to one side leading to detached garage. The rear gardens are a lovely feature of the property being generous in proportions and landscaped for ease of maintenance. Laid to Astroturf lawn in the main with flagged pathways surrounding and feature planting, all fully enclosed by wood lap fencing. Large, flagged patio area, accessed off the Living Dining Kitchen provides ideal opportunity for alfresco dining and enjoying the lovely aspect.

Directions

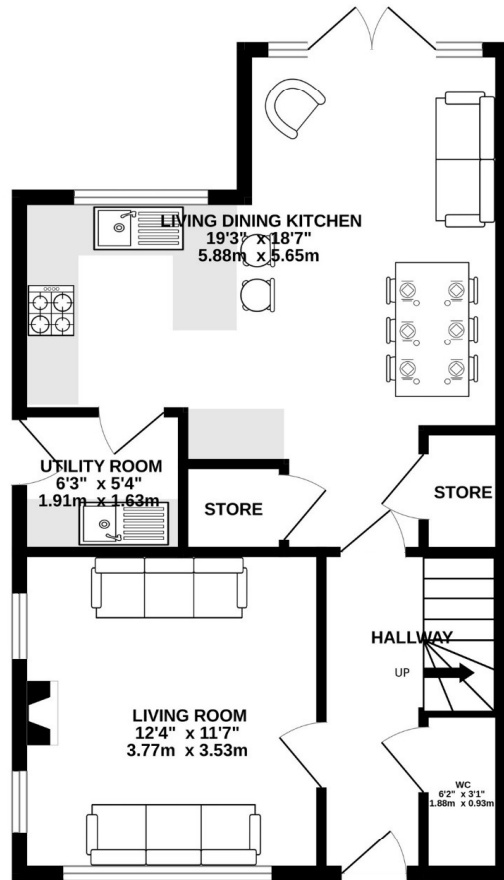
From the roundabout at Canute Square travel along King Edward Road (A50) turning left at the traffic lights passing the rail station on your left. At the next lights turn left up Hollow lane onto Mobberley Road. Just past the Fire Station turn left onto Parkgate & continue after passing the local shops round to the development and Hamman Drive where the property will soon be seen on your left.

- Immaculately presented detached property
- Spacious & flexible living accommodation
- Living dining kitchen with integrated appliances & separate utility room
- Cloakroom/Downstairs WC
- Three bedrooms with fitted wardrobes
- Two bathrooms (one en-suite)
- Enclosed low maintenance rear garden
- Ample off road parking
- Detached garage

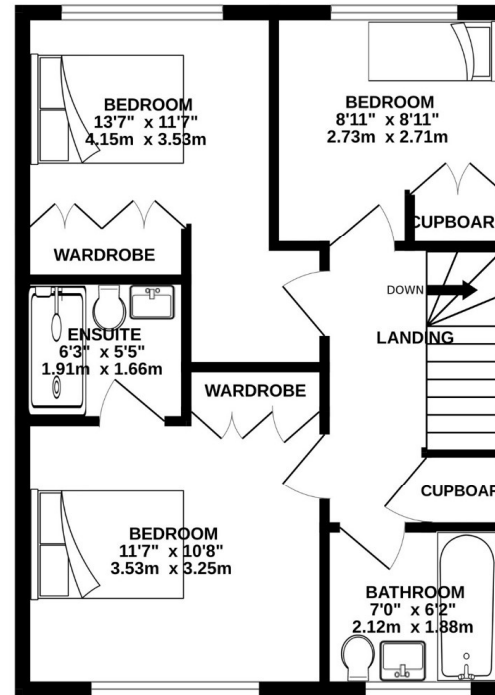
Postcode – WA16 8FN
Tenure – Freehold
Local Authority – Cheshire East
Council Tax – Band D
EPC - B



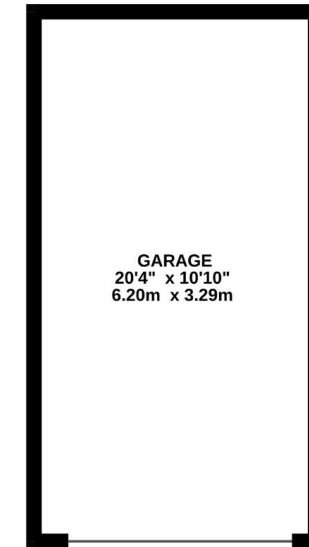
GROUND FLOOR
535 sq.ft. (49.7 sq.m.) approx.



1ST FLOOR
482 sq.ft. (44.7 sq.m.) approx.



EXTERNALLY
220 sq.ft. (20.4 sq.m.) approx.



TOTAL FLOOR AREA : 1236 sq.ft. (114.9 sq.m.) approx.

Whilst every attempt has been made to ensure the accuracy of the floorplan contained here, measurements of doors, windows, rooms and any other items are approximate and no responsibility is taken for any error, omission or mis-statement. This plan is for illustrative purposes only and should be used as such by any prospective purchaser. The services, systems and appliances shown have not been tested and no guarantee as to their operability or efficiency can be given.
Made with Metropix ©2025

103 King Street, Knutsford, Cheshire, WA16 6EQ

01565 654 000

E: info@irlamsestateagents.co.uk

www.irlamsestateagents.co.uk

I1021_ Printed by Ravensworth 01670 713330

Irlams (Estate Agents) Ltd for themselves and for the vendors or lessors of this property whose agents they are give notice that:

- The particulars are set out as a general outline only for the guidance of intending purchasers or lessees, and do not constitute, nor constitute part of, an offer or contract;
- All descriptions, dimensions, references to condition and necessary permissions for use and occupation, and other details are given in good faith and are believed to be correct but any intending purchasers or lessees should not rely on them as statements or representations of fact, but must satisfy themselves by inspection or otherwise as to the correctness of each of them;
- No person in the employment of Irlams (Estate Agents) Ltd has any authority to make or give any representation or warranty whatsoever in relation to this property.
- We believe the information above to be accurate at the point it was obtained however you may wish to make a final check with your Solicitor or with us in respect of anything above you feel crucial before you proceed with the purchase of this property.

