



TO LET

Mobberley Road, Knutsford

  
IRLAMS  
*of Knutsford*



## Knutsford, WA16 8EE

### Mobberley Road - £1,500 pcm



### The Property

This unique and characterful apartment has been lovingly refurbished to a modern specification, and now provides charming, high quality accommodation in the heart of the Town Centre. With Knutsford on your doorstep, this property is ideal for anyone wanting a short stroll in to the shops, bars and restaurants. Knutsford rail station is also just a few minutes' walk.

To the rear is a gorgeous, enclosed garden, beautifully-stocked with a private aspect, perfect for relaxing and al fresco dining. A driveway provides ample parking for up to two cars, and a garage provides further parking and

storage. The property also benefits from access to the communal Sparrow Lane courtyard.

### Directions

From the roundabout in Canute Square travel along King Edward Road (A50) turning left at the traffic lights passing the rail station. After passing Aldi supermarket at the next set of lights continue straight on up Brook Street and upon reaching The Legh Arms public house on your right, the entrance to Mobberley Road will be seen on your left and the apartment is set back behind the shop frontage.

- A beautiful ground floor garden apartment
- A short stroll to the town centre
- Generous living space
- Refitted kitchen & bathrooms
- Three bedrooms
- Two bathrooms & utility
- Garage, off-road parking & beautiful enclosed private garden.
- Unfurnished
- Available End of September

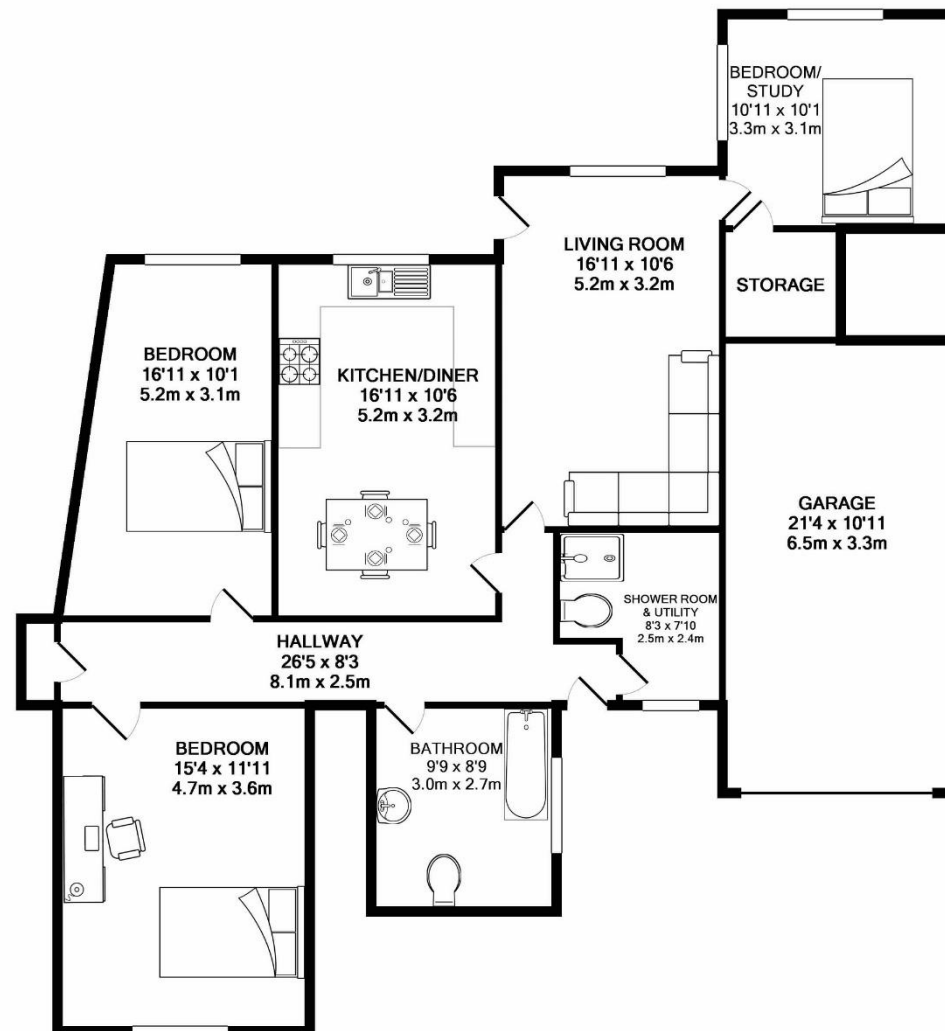
**Postcode** – WA16 8EE

**EPC Rating** – D

**Local Authority** – Cheshire East

**Council Tax** – Band B





TOTAL APPROX. FLOOR AREA 1326 SQ.FT. (123.2 SQ.M.)

Whilst every attempt has been made to ensure the accuracy of the floor plan contained here, measurements of doors, windows, rooms and any other items are approximate and no responsibility is taken for any error, omission, or mis-statement. This plan is for illustrative purposes only and should be used as such by any prospective purchaser. The services, systems and appliances shown have not been tested and no guarantee as to their operability or efficiency can be given.  
Made with Metropix ©2017

103 King Street, Knutsford, Cheshire, WA16 6EQ

01565 654 000

E: [info@irlamsestateagents.co.uk](mailto:info@irlamsestateagents.co.uk)

[www.irlamsestateagents.co.uk](http://www.irlamsestateagents.co.uk)

I1021\_ Printed by Ravensworth 01670 713330

Irlams (Estate Agents) Ltd for themselves and for the vendors or lessors of this property whose agents they are give notice that:

- The particulars are set out as a general outline only for the guidance of intending purchasers or lessees, and do not constitute, nor constitute part of, an offer or contract;
- All descriptions, dimensions, references to condition and necessary permissions for use and occupation, and other details are given in good faith and are believed to be correct but any intending purchasers or lessees should not rely on them as statements or representations of fact, but must satisfy themselves by inspection or otherwise as to the correctness of each of them;
- No person in the employment of Irlams (Estate Agents) Ltd has any authority to make or give any representation or warranty whatsoever in relation to this property.

