



Knutsford
Mobberley Road


IRLAMS
of Knutsford

Knutsford, WA16 8EN

Mobberley Road

Offers over £395,000



The Property

This superb, extended, three-bedroom semi-detached house comes well-presented throughout and offers great space perfect for a variety of family setups. Set off a quiet access road back from the main road, the property is conveniently positioned within a short walk of Knutsford Town Centre and all local amenities including Knutsford's shops, bars and restaurants as well as its stunning outdoor spaces such as Tatton Park and The Moor. The house itself is deceptively spacious and comes with further potential for development (subject to relevant permissions). Particular mention must be made of the lovely open-plan dining kitchen opening out to the rear garden, the useful study/snug which also leads out to the garden, a separate utility room as well as the three double bedrooms.

The property is approached via a generous front garden with driveway parking for multiple vehicles and leading to the side entrance.

To the rear is a private, enclosed garden laid mainly to lawn with flagged patio, established plants, shrubs and raised planter beds, all enclosed by brick elevations and wood lap fencing, perfect for outdoor dining and entertaining.

Directions

From Knutsford Town Centre proceed along King Edward Road turning left at the rail station down Adams Hill. At the lights proceed up Hollow Lane onto Mobberley Road.



- Beautifully presented semi-detached property
- Short walk to local amenities & Knutsford Town Centre
- Spacious & flexible living accommodation
- Open plan dining kitchen with separate utility room
- Three generous bedrooms
- Enclosed, private gardens
- Driveway providing off road parking

Postcode – WA16 8EN

Tenure – Freehold

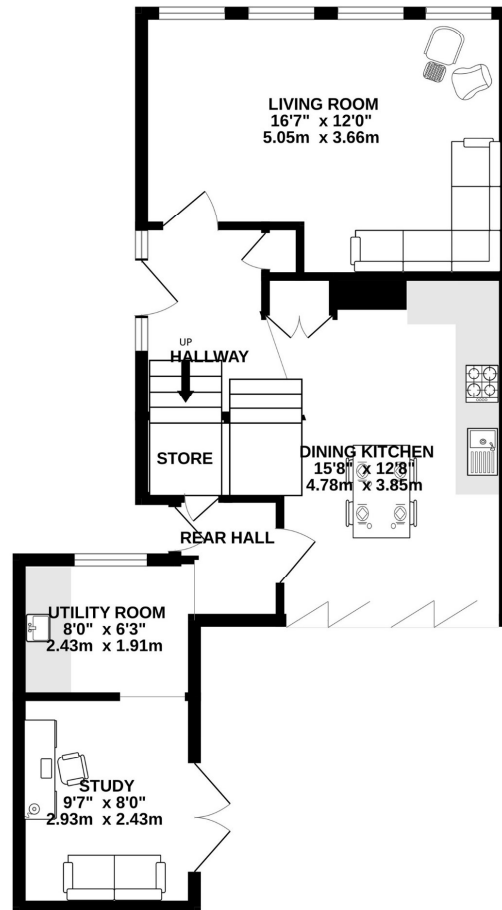
Local Authority – Cheshire East

Council Tax – Band C

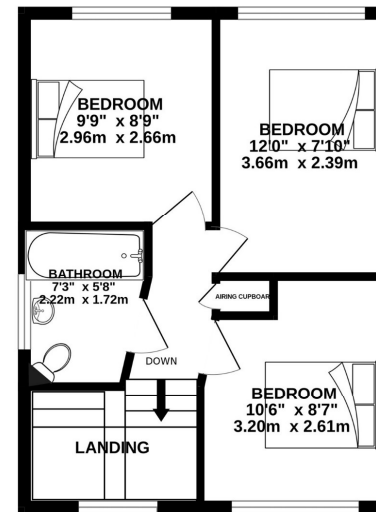
EPC - D



GROUND FLOOR
570 sq.ft. (53.0 sq.m.) approx.



1ST FLOOR
373 sq.ft. (34.7 sq.m.) approx.



TOTAL FLOOR AREA : 943 sq.ft. (87.6 sq.m.) approx.

Whilst every attempt has been made to ensure the accuracy of the floorplan contained here, measurements of doors, windows, rooms and any other items are approximate and no responsibility is taken for any error, omission or mis-statement. This plan is for illustrative purposes only and should be used as such by any prospective purchaser. The services, systems and appliances shown have not been tested and no guarantee is given as to their operation or efficiency can be given.
Made with Metropix ©2025

103 King Street, Knutsford, Cheshire, WA16 6EQ

01565 654 000

E: info@irlamsestateagents.co.uk

www.irlamsestateagents.co.uk

I1021_ Printed by Ravensworth 01670 713330

Irlams (Estate Agents) Ltd for themselves and for the vendors or lessors of this property whose agents they are give notice that:

- The particulars are set out as a general outline only for the guidance of intending purchasers or lessees, and do not constitute, nor constitute part of, an offer or contract;
- All descriptions, dimensions, references to condition and necessary permissions for use and occupation, and other details are given in good faith and are believed to be correct but any intending purchasers or lessees should not rely on them as statements or representations of fact, but must satisfy themselves by inspection or otherwise as to the correctness of each of them;
- No person in the employment of Irlams (Estate Agents) Ltd has any authority to make or give any representation or warranty whatsoever in relation to this property.
- We believe the information above to be accurate at the point it was obtained however you may wish to make a final check with your Solicitor or with us in respect of anything above you feel crucial before you proceed with the purchase of this property.


IRLAMs
of Knutsford