



**Knutsford**  
Tatton Court, King Street





# Knutsford, WA16 6HW

## Tatton Court, King Street

### £310,000



### The Property

This lovely, modern penthouse apartment forms part of an exclusive development located in the heart of Knutsford Town Centre. This home has been loving improved and updated by the current owner. The property sits in an enviable position at the quieter end of King Street but with the shops, bars and restaurants on the door step, and Tatton Park just across the road. The apartment itself comes immaculately presented throughout. Particular mention must be made of the stunning, bright open-plan living dining kitchen, with windows to two elevations offering incredible views across Tatton Park and the Moor, the recently renovated bathroom suite as well as the full head-height loft

perfect for storage and potential conversion subject to relevant permissions.

The property is approached via communal grounds and car park offering off-road parking. A single garage provides further parking or storage.

### Directions

From the roundabout in Canute square travel along Tatton Street where the entrance to Tatton Court will soon be seen on your right.

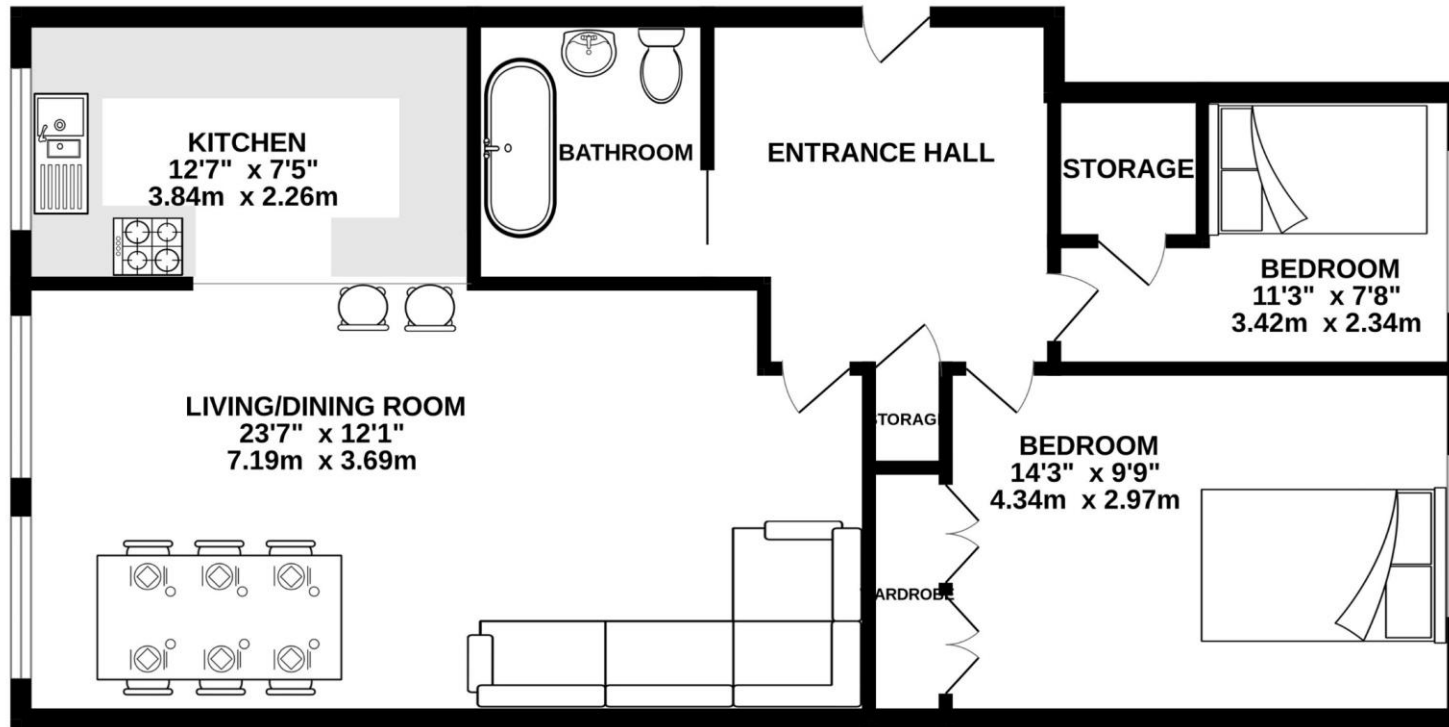


- A stunning penthouse apartment
- Situated on the doorstep of Knutsford town centre & Tatton Park
- Spacious open plan living accommodation
- Lovely breakfast kitchen with integrated appliances
- Two generous bedrooms
- Superb newly refurbished bathroom
- Loft space, ideal for storage or possible conversion
- Resident's parking
- Garage

**Postcode** – WA16 6HW  
**EPC Rating** – C  
**Tenure** – Leasehold  
**Local Authority** – Cheshire East  
**Council Tax** – Band D



GROUND FLOOR  
757 sq.ft. (70.3 sq.m.) approx.



TOTAL FLOOR AREA : 757 sq.ft. (70.3 sq.m.) approx.

Whilst every attempt has been made to ensure the accuracy of the floorplan contained here, measurements of doors, windows, rooms and any other items are approximate and no responsibility is taken for any error, omission or mis-statement. This plan is for illustrative purposes only and should be used as such by any prospective purchaser. The services, systems and appliances shown have not been tested and no guarantee as to their operability or efficiency can be given.

Made with Metropix ©2024

103 King Street, Knutsford, Cheshire, WA16 6EQ

01565 654 000

E: [info@irlamsestateagents.co.uk](mailto:info@irlamsestateagents.co.uk)

[www.irlamsestateagents.co.uk](http://www.irlamsestateagents.co.uk)

I1021\_ Printed by Ravensworth 01670 713330

Irlams (Estate Agents) Ltd for themselves and for the vendors or lessors of this property whose agents they are give notice that:

- (a) The particulars are set out as a general outline only for the guidance of intending purchasers or lessees, and do not constitute, nor constitute part of, an offer or contract;
- (b) All descriptions, dimensions, references to condition and necessary permissions for use and occupation, and other details are given in good faith and are believed to be correct but any intending purchasers or lessees should not rely on them as statements or representations of fact, but must satisfy themselves by inspection or otherwise as to the correctness of each of them;
- (c) No person in the employment of Irlams (Estate Agents) Ltd has any authority to make or give any representation or warranty whatsoever in relation to this property.

  
**IRLAMs**  
*of Knutsford*