



TO LET
King Street, Knutsford


IRLAM
of Knutsford



Knutsford, WA16 6EQ

King Street - £1,100 pcm



The Property

This superb two-bedroom duplex apartment has been lovingly refurbished to now provide a modern style throughout. Particular mention must be made of the spacious accommodation evident throughout the property. The apartment forms part of a quiet set of period properties conveniently positioned at the heart of Knutsford Town Centre with all local amenities on the doorstep, including

the shops bars and restaurants, as well as Tatton Park and The Moor.

Directions

From Irlams office on King Street, the access to the apartment is just passed The Beauty Club.

- A superb duplex town centre apartment
- Generous living space
- Two bedrooms
- Breakfast kitchen
- Refitted bathroom
- Situated in the heart of Knutsford Town Centre with all amenities on your doorstep
- Unfurnished
- Available May

Postcode – WA16 6EQ

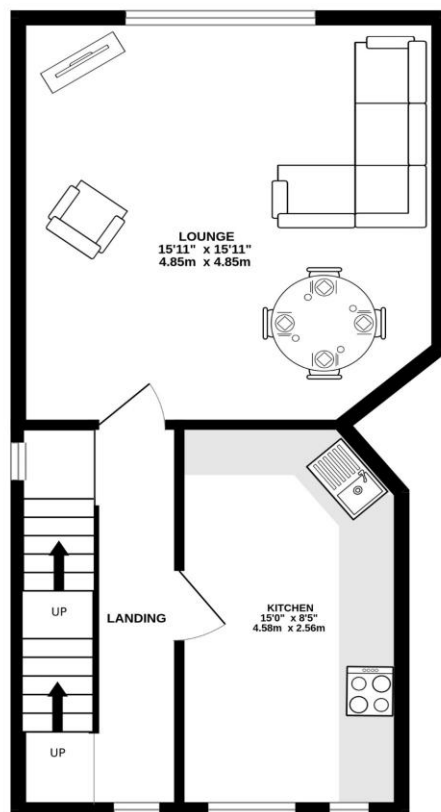
EPC Rating – E

Local Authority – Cheshire East

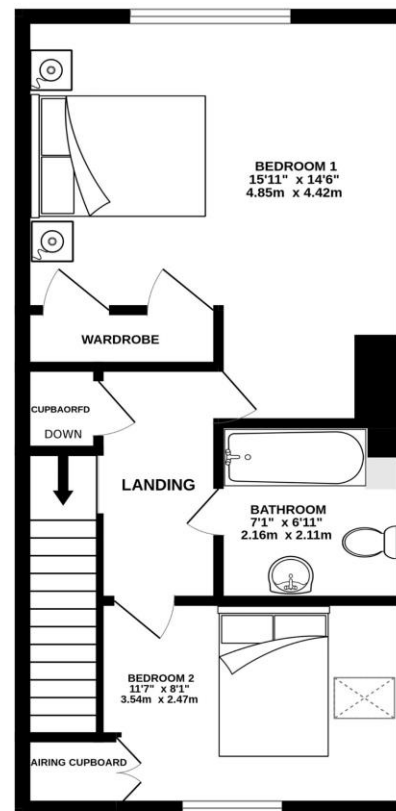
Council Tax – Band B



1ST FLOOR
462 sq.ft. (42.9 sq.m.) approx.



2ND FLOOR
441 sq.ft. (41.0 sq.m.) approx.



TOTAL FLOOR AREA : 903 sq.ft. (83.9 sq.m.) approx.

Whilst every attempt has been made to ensure the accuracy of the floorplan contained here, measurements of doors, windows, rooms and any other items are approximate and no responsibility is taken for any error, omission or mis-statement. This plan is for illustrative purposes only and should be used as such by any prospective purchaser. The services, systems and appliances shown have not been tested and no guarantee as to their operability or efficiency can be given.
Made with Metropix ©2023

103 King Street, Knutsford, Cheshire, WA16 6EQ

01565 654 000

E: info@irlamsestateagents.co.uk

www.irlamsestateagents.co.uk

I1021_ Printed by Ravensworth 01670 713330

Irlams (Estate Agents) Ltd for themselves and for the vendors or lessors of this property whose agents they are give notice that:

- (a) The particulars are set out as a general outline only for the guidance of intending purchasers or lessees, and do not constitute, nor constitute part of, an offer or contract;
- (b) All descriptions, dimensions, references to condition and necessary permissions for use and occupation, and other details are given in good faith and are believed to be correct but any intending purchasers or lessees should not rely on them as statements or representations of fact, but must satisfy themselves by inspection or otherwise as to the correctness of each of them;
- (c) No person in the employment of Irlams (Estate Agents) Ltd has any authority to make or give any representation or warranty whatsoever in relation to this property.

