



TO LET

Argyle Court, King Street, Knutsford





Knutsford, WA16 6HF

Argyle Court, King Street

£1,100 pcm



The Property

This spacious and well-presented duplex apartment offers fantastic living and bedroom space in an unbeatable location. Conveniently situated at the heart of Knutsford town centre with views over The Moor, the property sits on the doorstep of all local amenities including the shops, bars and restaurants, as well as Knutsford's stunning outdoor spaces such as Tatton Park. The property itself is set over two storeys and is perfect for singles, couples and sharers. Particular mention must be made of the large, bright, open-plan living dining room with dual aspect allowing ample natural light.

Directions

From the centre of Knutsford, proceed along King Street and, after a short distance just past the Irlams Office on the right-hand side, a wrought iron balustrade leads to steps which allow access to Old Market Place and Argyle Court.



- A spacious duplex apartment
- Situated in the heart of the town centre
- Large open plan living dining room with views over the town
- Two double bedrooms
- Modern fitted kitchen
- Beautiful bathroom
- Unfurnished
- Available June

Postcode – WA16 6HF

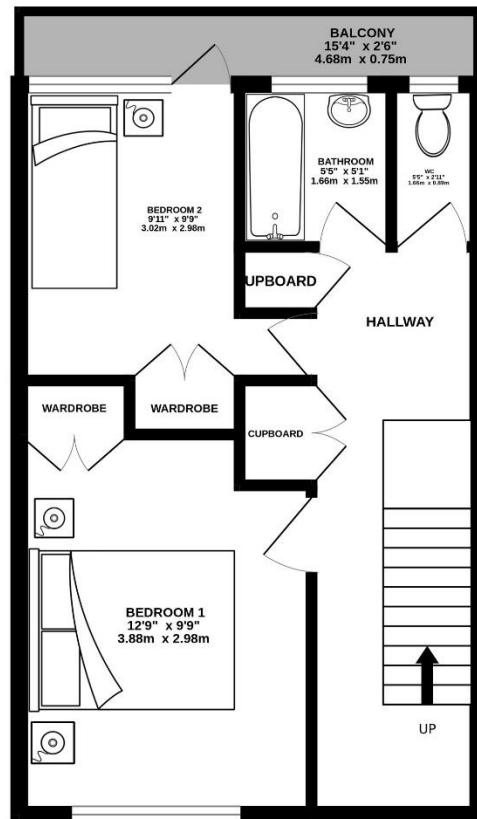
EPC Rating – D

Local Authority – Cheshire East

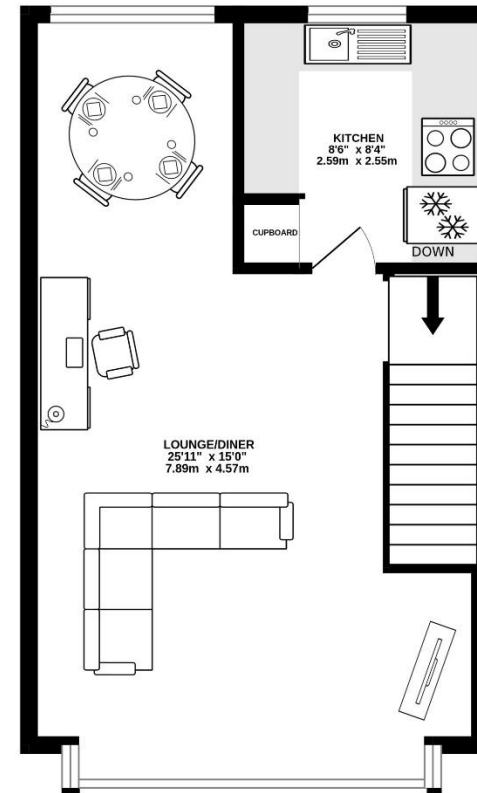
Council Tax – Band D



GROUND FLOOR
376 sq.ft. (34.9 sq.m.) approx.



1ST FLOOR
393 sq.ft. (36.5 sq.m.) approx.



TOTAL FLOOR AREA : 769 sq.ft. (71.4 sq.m.) approx.

Whilst every attempt has been made to ensure the accuracy of the floorplan contained here, measurements of doors, windows, rooms and any other items are approximate and no responsibility is taken for any error, omission or mis-statement. This plan is for illustrative purposes only and should be used as such by any prospective purchaser. The services, systems and appliances shown have not been tested and no guarantee as to their operability or efficiency can be given.
Made with Metropix ©2024

103 King Street, Knutsford, Cheshire, WA16 6EQ

01565 654 000

E: info@irlamsestateagents.co.uk

www.irlamsestateagents.co.uk

I1021_ Printed by Ravensworth 01670 713330

Irlams (Estate Agents) Ltd for themselves and for the vendors or lessors of this property whose agents they are give notice that:

- (a) The particulars are set out as a general outline only for the guidance of intending purchasers or lessees, and do not constitute, nor constitute part of, an offer or contract;
- (b) All descriptions, dimensions, references to condition and necessary permissions for use and occupation, and other details are given in good faith and are believed to be correct but any intending purchasers or lessees should not rely on them as statements or representations of fact, but must satisfy themselves by inspection or otherwise as to the correctness of each of them;
- (c) No person in the employment of Irlams (Estate Agents) Ltd has any authority to make or give any representation or warranty whatsoever in relation to this property.


IRLAMs
of Knutsford