



Knutsford
Ruskin Court


IRLAM
of Knutsford

Knutsford, WA16

Ruskin Court

Offers Over £299,950



The Property

This well presented first floor, two bedroom apartment forms part of a popular development located in the heart of Knutsford Town Centre. The property sits in an enviable elevated position but with the shops, bars and restaurants on the door step, and Tatton Park just across the road. The apartment itself comes well presented throughout. Particular mention must be made of the large, bright living room with windows overlooking The Moor flooding the room with natural daylight, the master bedroom with dual aspect and fitted wardrobes as well as the generous proportions found throughout.

The property is approached via communal grounds and car park offering off-road parking. A single garage provides further parking or storage.

Directions

From Irlams office proceed down King Street and just prior to the entrance to Tatton Park turn right down Drury Lane where the entrance to Ruskin Court will soon be seen on your right hand side.

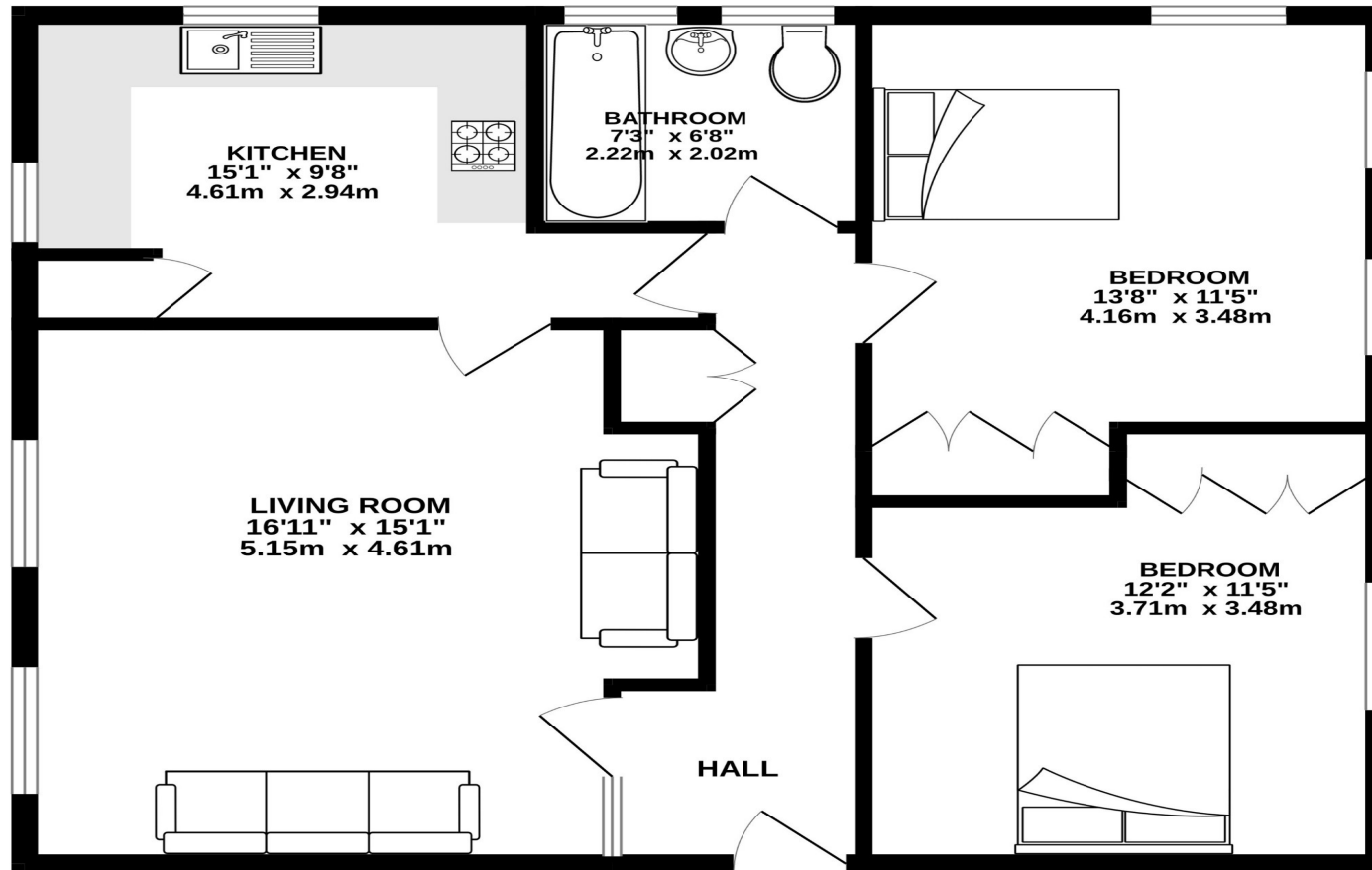


- Well presented first floor apartment situated in the centre of Knutsford
- Spacious & flexible living accommodation
- Dual aspect Kitchen with integrated appliances
- Two generous bedrooms
- Off road parking
- Fantastic aspect looking out to The Moor

Postcode – WA16 6HN
Tenure – Leasehold (999 years from 1983)
Local Authority – Cheshire East
Council Tax – Band D
EPC - TBC
Service Charges -£135pcm



FIRST FLOOR
797 sq.ft. (74.0 sq.m.) approx.



TOTAL FLOOR AREA : 797 sq.ft. (74.0 sq.m.) approx.

Whilst every attempt has been made to ensure the accuracy of the floorplan contained here, measurements of doors, windows, rooms and any other items are approximate and no responsibility is taken for any error, omission or mis-statement. This plan is for illustrative purposes only and should be used as such by any prospective purchaser. The services, systems and appliances shown have not been tested and no guarantee as to their operability or efficiency can be given.
Made with Metroplan ©2025

103 King Street, Knutsford, Cheshire, WA16 6EQ

01565 654 000

E: info@irlamsestateagents.co.uk

www.irlamsestateagents.co.uk

I1021_ Printed by Ravensworth 01670 713330

Irlams (Estate Agents) Ltd for themselves and for the vendors or lessors of this property whose agents they are give notice that:

- The particulars are set out as a general outline only for the guidance of intending purchasers or lessees, and do not constitute, nor constitute part of, an offer or contract;
- All descriptions, dimensions, references to condition and necessary permissions for use and occupation, and other details are given in good faith and are believed to be correct but any intending purchasers or lessees should not rely on them as statements or representations of fact, but must satisfy themselves by inspection or otherwise as to the correctness of each of them;
- No person in the employment of Irlams (Estate Agents) Ltd has any authority to make or give any representation or warranty whatsoever in relation to this property.
- We believe the information above to be accurate at the point it was obtained however you may wish to make a final check with your Solicitor or with us in respect of anything above you feel crucial before you proceed with the purchase of this property.


IRLAMs
of Knutsford