



Knutsford  
Beechwood, Tabley Road

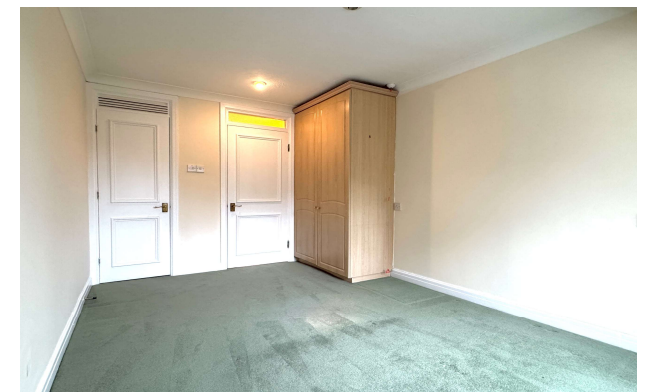




# Knutsford, WA16 0PQ

## Beechwood, Tabley Road

£90,000



### The Property

This immaculate top-floor one bedroom apartment forms part of a beautifully-maintained and highly desirable retirement development for the over 60's. Positioned on the top floor with wonderful panoramic views over The Heath, the property offers generous room proportions and would be suitable for immediate occupation. The development itself sits in a convenient position on a leafy, tree-lined road opposite The Heath and within a short stroll of all local amenities. Residents have use of a lovely communal lounge with toilet facilities, overnight suites for guests (subject to charges) and on-site house managers throughout the week.

The property sits in well-stocked and well-maintained grounds, with communal lawns bordered by mature trees, shrubs and flower beds. Approached via a communal car park with spaces subject to availability, the development also benefits from visitors spaces. EPC Rating: TBC

### Directions

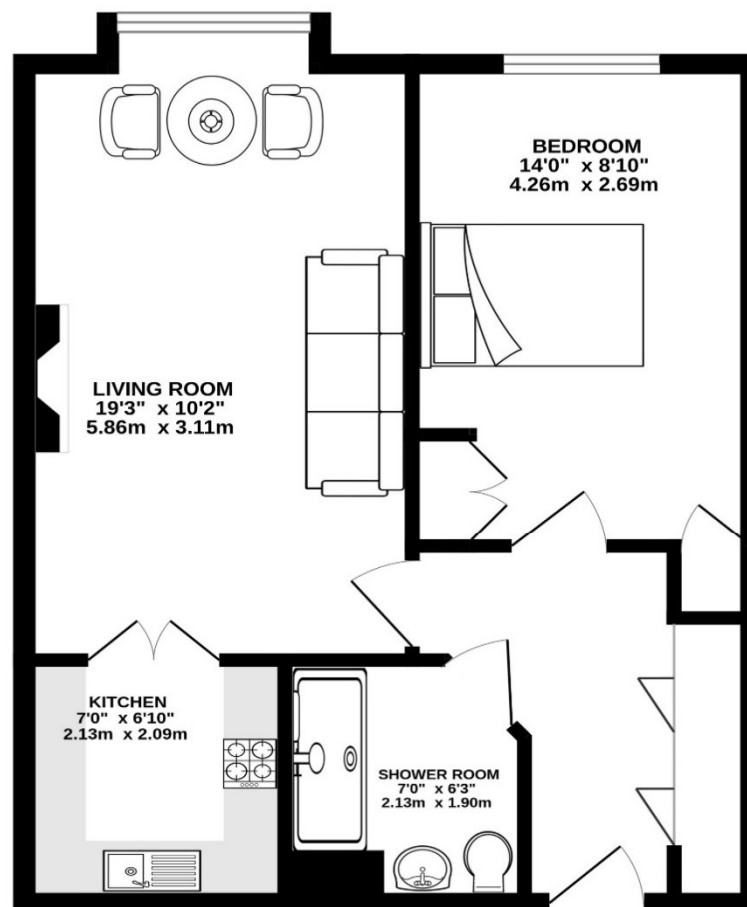
From the roundabout in Canute Square travel along Manchester Road (A50) passing The Heath on your left. Turn left into Tabley Road and the entrance to Beechwood will soon be seen on your right.



- An immaculately presented second floor retirement apartment
- Situated in the heart of Knutsford Town Centre
- A short stroll to all local amenities
- Stunning views over The Heath
- Living dining room
- Fitted kitchen
- Spacious bedroom
- Shower room
- Communal gardens
- Parking
- Communal lounge & guest suite facilities for visitors

**Postcode** – WA16 0PQ  
**EPC Rating** – TBC  
**Tenure** – Leasehold  
**Local Authority** – Cheshire East  
**Council Tax** – Band B





TOTAL FLOOR AREA : 466 sq.ft. (43.3 sq.m.) approx.

Whilst every attempt has been made to ensure the accuracy of the floorplan contained here, measurements of doors, windows, rooms and any other items are approximate and no responsibility is taken for any error, omission or mis-statement. This plan is for illustrative purposes only and should be used as such by any prospective purchaser. The services, systems and appliances shown have not been tested and no guarantee as to their operability or efficiency can be given.  
Made with Metropix ©2025

103 King Street, Knutsford, Cheshire, WA16 6EQ

01565 654 000

E: [info@irlamsestateagents.co.uk](mailto:info@irlamsestateagents.co.uk)

[www.irlamsestateagents.co.uk](http://www.irlamsestateagents.co.uk)

I1021\_ Printed by Ravensworth 01670 713330

Irlams (Estate Agents) Ltd for themselves and for the vendors or lessors of this property whose agents they are give notice that:

- (a) The particulars are set out as a general outline only for the guidance of intending purchasers or lessees, and do not constitute, nor constitute part of, an offer or contract;
- (b) All descriptions, dimensions, references to condition and necessary permissions for use and occupation, and other details are given in good faith and are believed to be correct but any intending purchasers or lessees should not rely on them as statements or representations of fact, but must satisfy themselves by inspection or otherwise as to the correctness of each of them;
- (c) No person in the employment of Irlams (Estate Agents) Ltd has any authority to make or give any representation or warranty whatsoever in relation to this property.

