



Knutsford
Ruskin Court


IRLAM
of Knutsford



Knutsford, WA16 6HN

Ruskin Court

£245,000



The Property

This superb ground floor, two bedroom apartment forms part of a well-regarded selection of similar properties tucked away within in the heart of Knutsford Town Centre. This home has been lovingly improved and updated by the current owner and offers modern living accommodation.

The property sits in an enviable position within Ruskin Court, in the heart of the town centre and has the benefit of having access to the shops, bars and restaurants that Knutsford has to offer as well as having the entrance to Tatton Park just across the road. The apartment itself comes immaculately presented throughout. Particular mention must be made of the stunning open-plan living dining kitchen, the recently renovated bathroom suite as well as the master bedroom complete with walk in wardrobe.

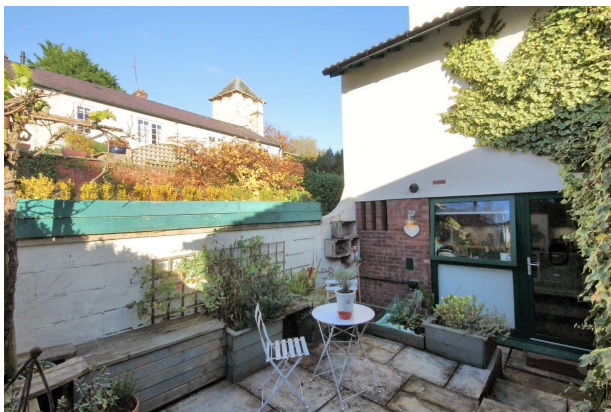
The property is approached via its own private front courtyard which is ideal for alfresco dining. In addition, this property comes with one allocated parking space.

Directions

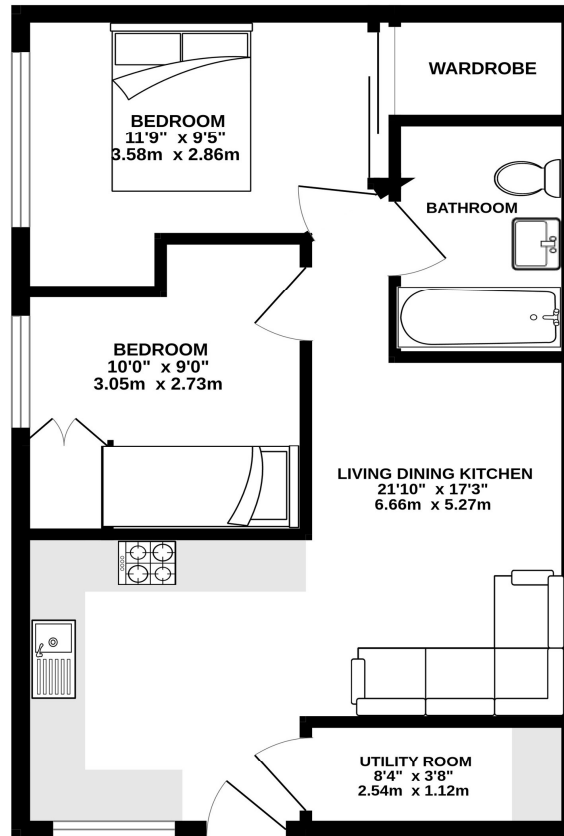
From our office proceed down King Street towards Tatton Park entrance and turn right into Drury Lane and turn right into Ruskin Court where the apartment will soon be found.

- An immaculately presented ground floor apartment
- Situated in the heart of Knutsford Town Centre & all amenities
- Open plan living dining kitchen with separate utility room
- Two bedrooms
- Bathroom
- Private courtyard garden
- Allocated parking

Postcode – WA16 6HN
Tenure – Leasehold
EPC Rating – TBC
Local Authority – Cheshire East
Council Tax – Band B



GROUND FLOOR
477 sq.ft. (44.3 sq.m.) approx.



TOTAL FLOOR AREA: 477 sq.ft. (44.3 sq.m.) approx.

Whilst every attempt has been made to ensure the accuracy of the floorplan contained here, measurements of doors, windows, rooms and any other items are approximate and no responsibility is taken for any error, omission or mis-statement. This plan is for illustrative purposes only and should be used as such by any prospective purchaser. The services, systems and appliances shown have not been tested and no guarantee as to their operability or efficiency can be given.
Made with Metropix ©2024

103 King Street, Knutsford, Cheshire, WA16 6EQ

01565 654 000

E: info@irlamsestateagents.co.uk

www.irlamsestateagents.co.uk

I1021_ Printed by Ravensworth 01670 713330

Irlams (Estate Agents) Ltd for themselves and for the vendors or lessors of this property whose agents they are give notice that:

- The particulars are set out as a general outline only for the guidance of intending purchasers or lessees, and do not constitute, nor constitute part of, an offer or contract;
- All descriptions, dimensions, references to condition and necessary permissions for use and occupation, and other details are given in good faith and are believed to be correct but any intending purchasers or lessees should not rely on them as statements or representations of fact, but must satisfy themselves by inspection or otherwise as to the correctness of each of them;
- No person in the employment of Irlams (Estate Agents) Ltd has any authority to make or give any representation or warranty whatsoever in relation to this property.

