



Knutsford
Northfields


IRLAM
of Knutsford



Northfields

Knutsford, WA16 8JN

Offers Over £169,950



The Property

This superb, modern two double bed ground floor apartment sits in an enviable position on a quiet road within Knutsford Town Centre. Benefiting from its own private garden and driveway, the charming property sits within touching distance of all local amenities including Knutsford's shops, bars and restaurants, as well as its stunning outdoor spaces such as Tatton Park and The Moor. The property itself is deceptively spacious and offers ample natural light. Particular mention must be made of the large bright living room and separate modern kitchen. The property is approached via a private front garden with driveway providing off-road parking for multiple vehicles.

To the rear is an enclosed, private garden laid mainly to lawn and bordered by mature trees and hedges.

Directions

From the town centre, proceed along King Edward Road (A50) turning left at the traffic lights. Pass the railway station and turn left at the next set of traffic lights up Hollow Lane and onto Mobberley Road. Turn right onto Manor Park North and then the first left on to Shaw Drive. Take the second left-hand turn on to Northfields where the property can be found immediately on your left.

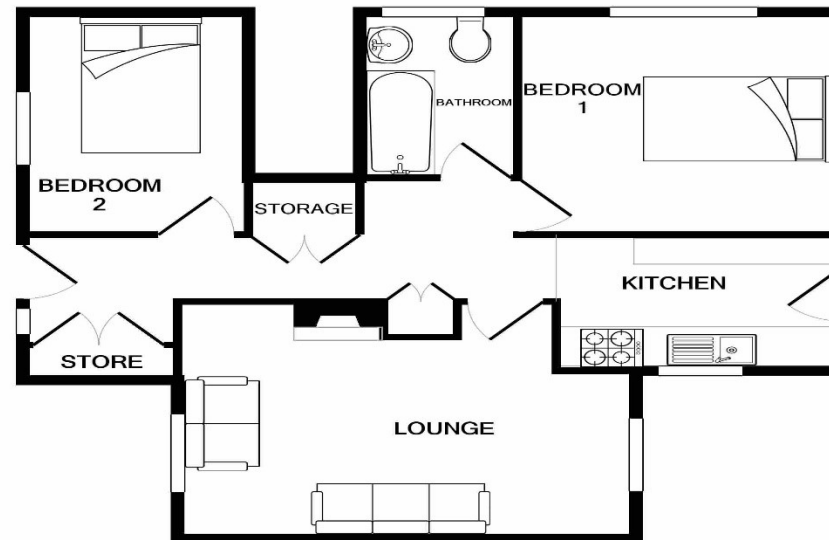
- A deceptively spacious ground floor apartment
- Own private driveway and front and rear gardens
- Good-sized living room
- Brand new boiler
- Two double bedrooms
- Modern bathroom
- Off-road parking for multiple vehicles
- Walking distance of Knutsford Town Centre

Postcode – WA16 8JN

EPC Rating – C

Local Authority – Cheshire East

Council Tax – Band B



Whilst every attempt has been made to ensure the accuracy of the floor plan contained here, measurements of doors, windows, rooms and any other items are approximate and no responsibility is taken for any error, omission, or mis-statement. This plan is for illustrative purposes only and should be used as such by any prospective purchaser. The services, systems and appliances shown have not been tested and no guarantee as to their operability or efficiency can be given
Made with Metropix ©2020

103 King Street, Knutsford, Cheshire, WA16 6EQ

01565 654 000

E: info@irlamsestateagents.co.uk

www.irlamsestateagents.co.uk

I1021_ Printed by Ravensworth 01670 713330

Irlams (Estate Agents) Ltd for themselves and for the vendors or lessors of this property whose agents they are give notice that:
(a) The particulars are set out as a general outline only for the guidance of intending purchasers or lessees, and do not constitute, nor constitute part of, an offer or contract;
(b) All descriptions, dimensions, references to condition and necessary permissions for use and occupation, and other details are given in good faith and are believed to be correct but any intending purchasers or lessees should not rely on them as statements or representations of fact, but must satisfy themselves by inspection or otherwise as to the correctness of each of them;
(c) No person in the employment of Irlams (Estate Agents) Ltd has any authority to make or give any representation or warranty whatsoever in relation to this property.

